

**INSTRUMENT APPROACH  
CHART (IAC)**

**GUAJARÁ-MIRIM / Guajar-Mirim (SBGM)**

**AD ELEV: 479'**

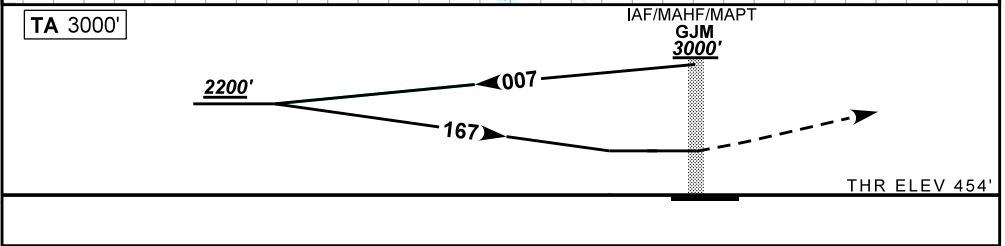
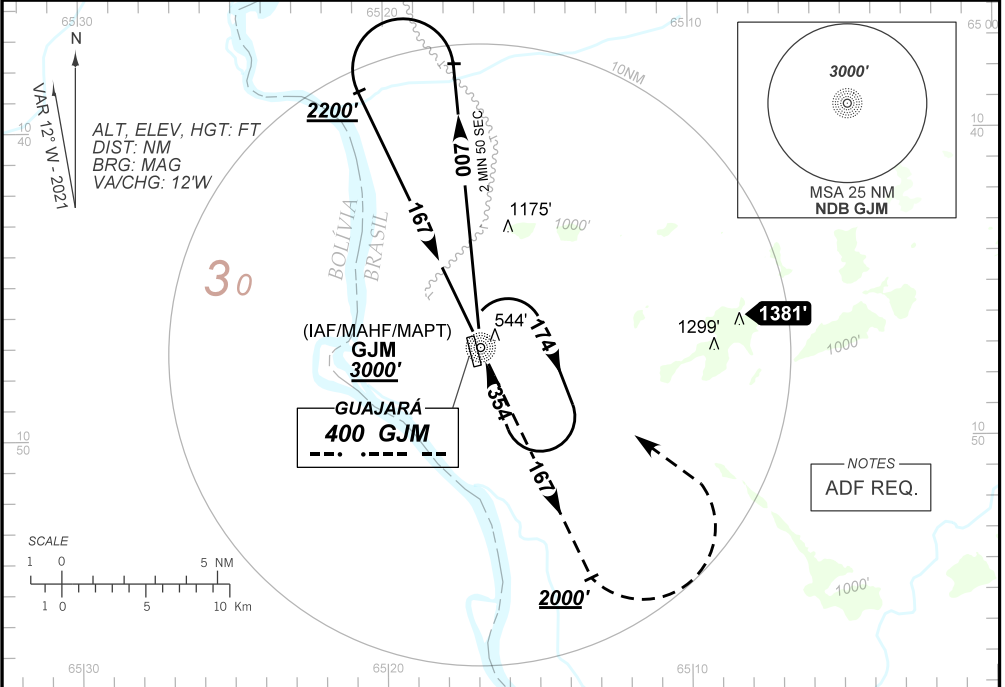
**NDB RWY 17**

ATIS NIL	APP NIL	AFIS GUAJAR-MIRIM 125.90	GNDC NIL
NDB GJM 400 KHz	FINAL CRS 167°	N/A	NDB MDA / (OCH): 1040' / (590')

APCH Perdida: Subir para **3000'**. Manter QDR **167** do NDB GJM at **2000'**. Aps, curvar  ESQUERDA direto NDB GJM para espera.

Missed APCH: Climb to **3000'**. Maintain **167** QDR GJM NDB until **2000'**. After, turn LEFT direct to GJM NDB for holding.

DEPARTAMENTO DE CONTROLE DO ESPAO AREO



NIL	RWY 17	Ground Speed (KT)	090	110	130	150	170	190
NIL	ALT	FPM	650					NA
NIL	(HGT)	FAF-MAPT	NA					

STRAIGHT-IN	CAT	A	B	C	D	E
NDB	MDA / (OCH)	1040' / (590')				NA
	ALS/NO ALS/ RVR ALS (m)	NIL / 1600 / NIL		NIL / 2700 / NIL		
CIRCLING	MDA / (OCH)	NA				
	VIS (m)	NA				

CHANGES: AD ELEV. LAYOUT. MNM OPR. PROC. VAR.