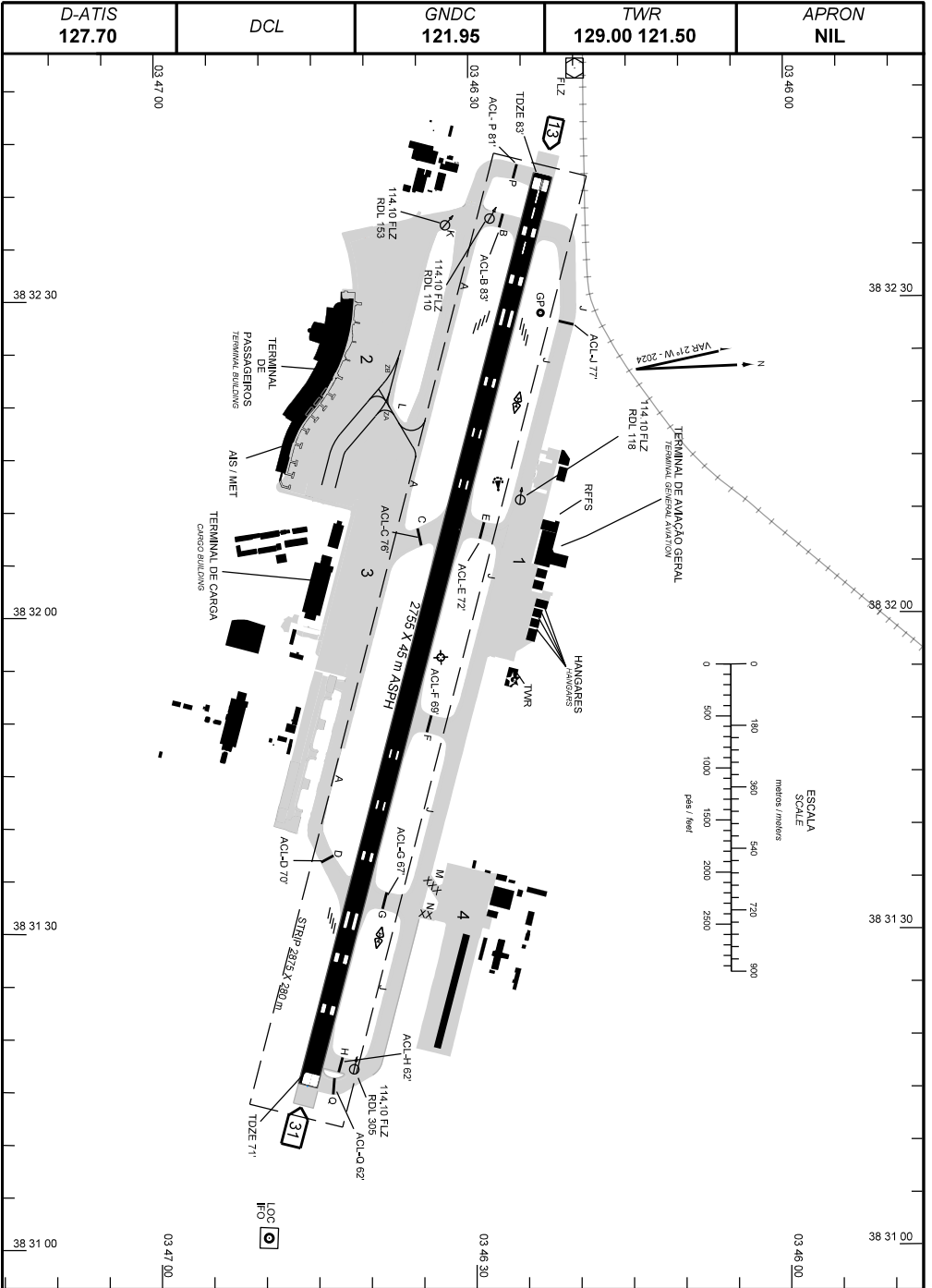


AD ELEV: 83'

ARP S03 46 33 W038 31 56



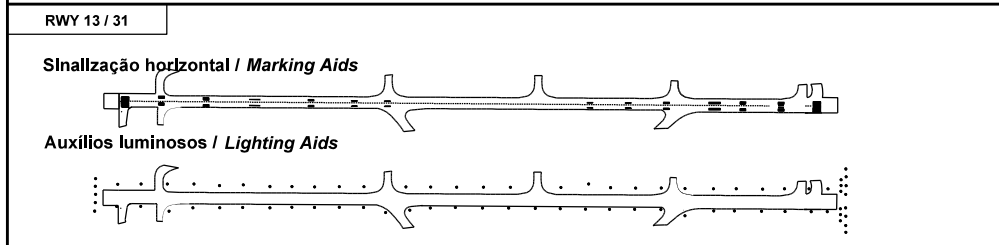
CHANGES: STOP POINT TWY.

ADC - SBFZ: INFORMAÇÕES COMPLEMENTARES / COMPLEMENTARY INFORMATION

CARACTERÍSTICAS FÍSICAS / PHYSICAL CHARACTERISTICS											
PISTA RUNWAY				DIMENSÕES(m) DIMENSIONS(m)				PCN	TIPO DE SUPERFÍCIE SURFACE KIND		
RWY	BRG MAG	Tipo Type	RCD	RWY	SWY	CWY	STRIP	RWY	RWY	SWY	
a	b	c	d	e	f	g	h	i	j	k	
13	126	PA-1	4E	2755x45			2875 x 280	66/F/A/X/T	ASPH		
31	306	NPA	4E								

DISTÂNCIAS DECLARADAS, AUXÍLIOS VISUAIS E COORDENADAS DAS CABECEIRAS DECLARED DISTANCES, VISUAL AIDS AND THRESHOLD COORDINATES							
RWY	TORA(m)	TODA(m)	ASDA(m)	LDA(m)	AUXÍLIOS / AIDS	ALTURA GEODAL(m) GEOD HEIGHT(m)	COORDENADAS COORDINATES
13	2755	2755	2755	2755	PAPI	- 8,62	S03 46 23 W038 32 42
31	2755	2755	2755	2755	PAPI(2.97°)	- 8,62	S03 46 46 W038 31 15

SERVIÇO DE SALVAMENTO E CONTRAINCÊNDIO / RESCUE AND FIRE FIGHTING SERVICE: RFFS REQ - 9



RMK:

- MEHT: PAPI - RWY 13 - 66FT.
RWY 31 - 61FT.
- TWY JULIET BTN THR 13 e TWY ECHO PRB OPS de ACFT COM ENVERGADURA ACIMA 36M (INCLUSIVE).
TWY JULIET BTN THR 13 AND TWY ECHO PRB OPS OF ACFT WITH WINGSPAN LARGER THAN 36 M (INCLUSIVE).

CHANGES: STOP POINT: TWY.