

**INSTRUMENT APPROACH
CHART (IAC)**

NATAL / Campo Augusto Severo, MIL (SBNT)

ILS W or LOC W RWY 16L

AD ELEV: 169'

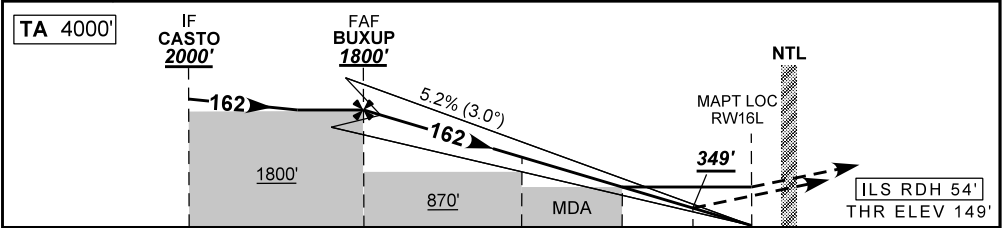
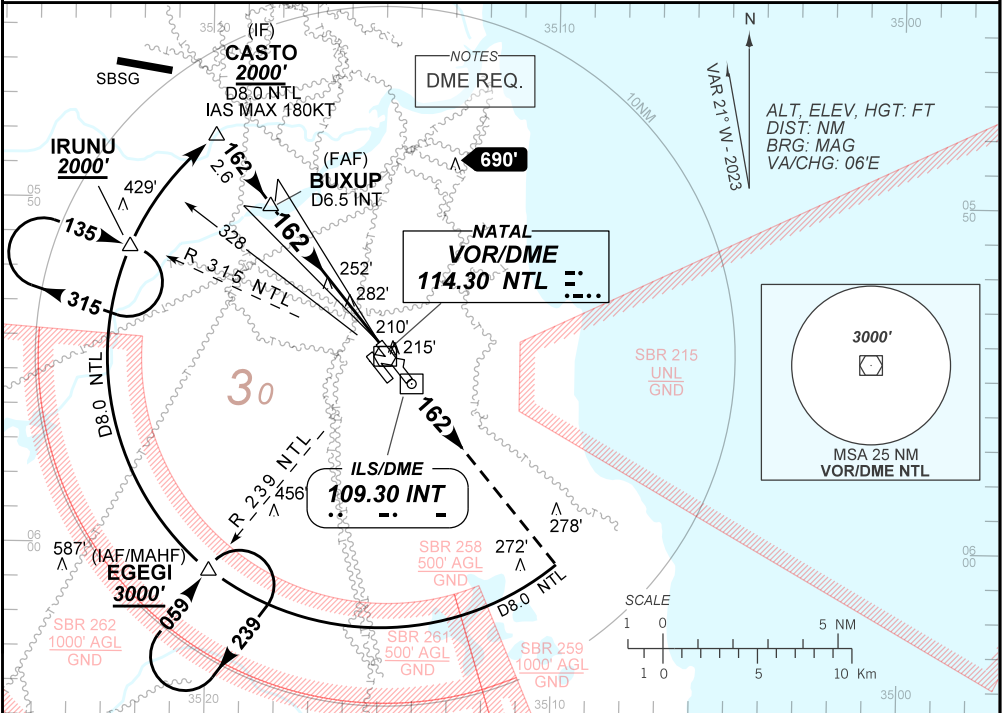
**USO EXCLUSIVO ACFT MILITARES
MILITARY ACFT ONLY**

(CAT A, B)

D-ATIS 132.65	APP NATAL 119.30 119.65 120.65 129.80		TWR NATAL 118.70 122.80	GNDC NATAL 121.90
ILS/DME INT 109.30 MHz	FINAL CRS 162°	FAF: 1800'	CAT I DA / (OCH): 349' / (200')	LOC only MDA / (OCH): 530' / (390')

APCH Perdida: Subir para **3000'** Manter proa **162** para interceptar arco DME 8.0 NM do VOR NTL até EGEGI para espera.

Missed APCH: Climb to **3000'**. Maintain heading **162** to intercept 8.0 NM DME arc NTL VOR until EGEGI for holding.



TO THR 16L (NM)	7.6	5.0	2.1	1.1	0.5	0.0
TO INT (DME)	9.1	6.5	3.6	2.6	2.0	1.5

BUXUP	4.0	3.0	2.1	1.1	RW16L	Ground Speed (KT)	090	110	130	150	170	190
1800	1477	1158	872	530	ALT	FPM	500	600	700	NA	NA	NA
1651	1328	1009	723	390	(HGT)	FAF-MAPT	NA					

STRAIGHT-IN	CAT	A	B	C	D	E
CAT I	DA / (OCH)	349' / (200')		NA	NA	NA
	ALS/NO ALS/RVR (m)	NIL / 1200 / 1100				
LOC	MDA / (OCH)	530' / (390')				
	ALS/NO ALS/RVR (m)	NIL / 1600 / 1550				

AIRAC AMDT 2310A1 05 OCT 23

SBNT_IAC_01D 1/1

USO EXCLUSIVO ACFT MILITARES / MILITARY ACFT ONLY

IAC ILS W or LOC W RWY 16L

DEPARTAMENTO DE CONTROLE DO ESPAÇO AÉREO

CHANGES: AD ELEV, LAYOUT, PROC, VAR.