

**INSTRUMENT APPROACH
CHART (IAC)**

**JOINVILLE / Lauro Carneiro de Loyola (SBJV)
RNP Y RWY 33 (AR)**

AD ELEV: 15'

(CAT A,B,C)

| | | | |
|-----------------------|--|--------------------------------|--------------------|
| ATIS 127.85 | APP CURITIBA 119.70 119.95 120.65 120.95 129.55 133.15 | TWR JOINVILLE 118.00 | GNDC NIL |
|-----------------------|--|--------------------------------|--------------------|

| | | | | |
|---|--------------------------|----------------------|---|-----------|
| TEMP LNAV/VNAV MIN 0°C / MAX 40°C | FINAL CRS 329° | FAF: 2450' | RNP 0.3 DA / (OCH): 415' / (405') | NA |
|---|--------------------------|----------------------|---|-----------|

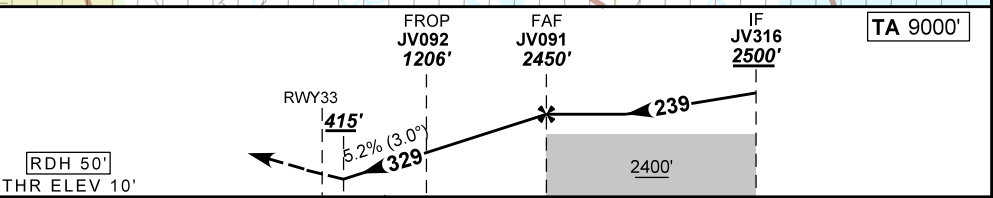
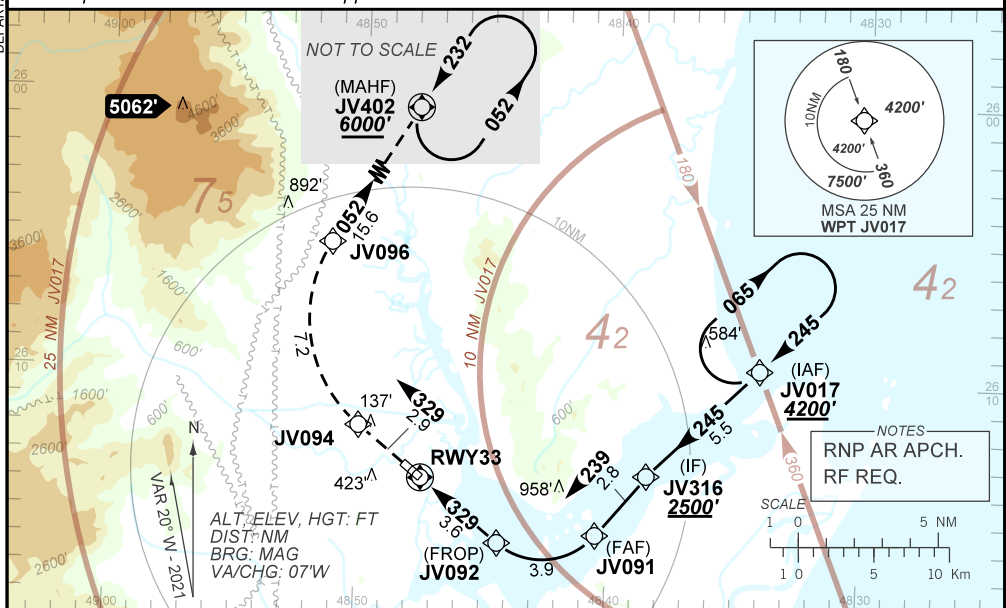
APCH Perdida: Subir para **6000'**. Manter rumo **329** até JV094. Após, curvar à DIREITA até JV096. Então, manter rumo **052** até JV402 para espera. 2) IAS MÁX 200KT até JV096.

Missed APCH: Climb to **6000'**. Maintain course **329** until JV094. After, turn RIGHT until JV096. Then, course **052** until JV402 for holding. 2) IAS MÁX 200KT until JV096.

RMK: Não efetuar transição para o RNP da aproximação perdida antes de 1.11 NM de RWY33.

Do not perform transition to missed approach RNP before 1.11 NM of RWY33.

DEPARTAMENTO DE CONTROLE DO ESPAÇO AÉREO



0.0 1.1 3.6 7.5 10.3 TO THR 33 (NM)

| | | | | | | | | | | | | | |
|-------|-----|-----|-------|------|------|-------|-------------------|-----|-----|-----|-----|-----|-----|
| RWY33 | 1.1 | 2.0 | JV092 | 5.0 | 6.0 | JV091 | Ground Speed (KT) | 090 | 110 | 130 | 150 | 170 | 190 |
| ALT | 415 | 697 | 1206 | 1652 | 1971 | 2450 | FPM | 500 | 600 | 700 | 800 | NA | NA |
| (HGT) | 405 | 687 | 1196 | 1642 | 1961 | 2440 | FAF-MAPT | NIL | | | | | |

| | | | | | | | |
|-------------|--------------------------|------------------|---|---|---|----|----|
| STRAIGHT-IN | CAT | A | B | C | D | E | |
| | DA / (OCH) | 415' / (405') | | | | NA | NA |
| RNP 0.3 | ALS/SNO ALS/ RVR ALS (m) | NIL / 1900 / NIL | | | | | |
| | | | | | | | |

**AUTORIZAÇÃO ESPECIAL PARA AERONAVE E TRIPULAÇÃO REQUERIDA
SPECIAL AUTHORIZATION FOR AIRCRAFT AND CREW REQUIRED**

CHANGES: NEW CHART.