

**INSTRUMENT APPROACH  
CHART (IAC)**

**PORTO ALEGRE / Salgado Filho, INTL (SBPA)**

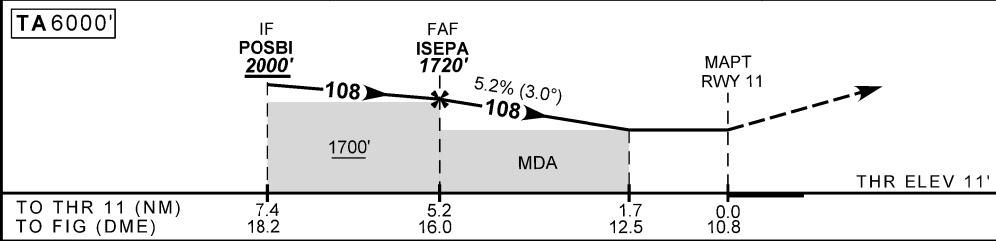
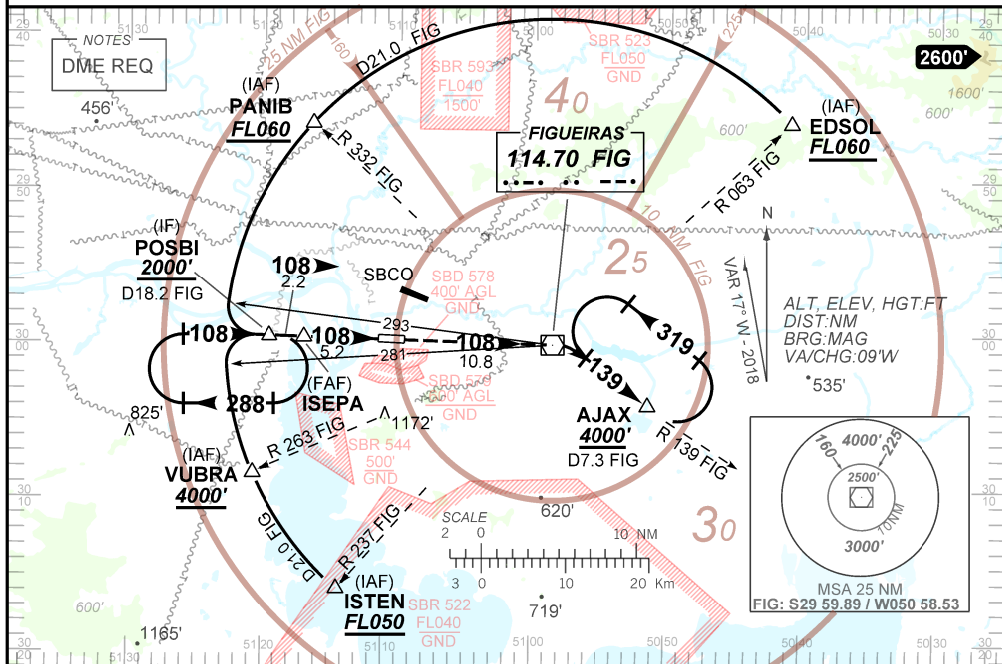
**AD ELEV: 12'**

**VOR Z RWY 11**

D-ATIS <b>132.35</b>	APP PORTO ALEGRE <b>119.00 120.10 120.55 128.90 121.50</b>			TWR PORTO ALEGRE <b>118.10 121.50</b>	GND PORTO ALEGRE <b>121.90 121.50</b>
VOR FIG <b>114.70 MHz</b>	FINAL CRS <b>108°</b>	FAF: <b>1720'</b>	<b>N/A</b>	VOR MDA / (OCH): <b>620' (610')</b>	

APCH Perdida: 1) Subir para **4000'**, manter rumo **108** até VOR FIG. Após curvar à DIREITA, RDL **139** FIG para espera em AJAX.  
 Missed APCH: 1) Climb to **4000'**, maintain course **108** until FIG VOR. Turn RIGHT, **139** FIG RDL for holding at AJAX.

RMK: NIL.



TO THR 11 (NM)	7.4	5.2	1.7	0.0
TO FIG (DME)	18.2	16.0	12.5	10.8
				THR ELEV 11'

	ISEPA	4.0	3.0	2.0	1.7	RWY 11	KT	090	110	130	150	170	190	
		1720	1335	1017	698	620	ALT	FPM	500	600	700	800	900	NA
		1709	1324	1006	687	610	(HGT)	FAF-MAPT			NA			

STRAIGHT-IN	CAT	A	B	C	D	E
VOR	MDA / (OCH)	620' / (610')				
	ALS/NO ALS/ RVR ALS (m)	NIL / 1600 / NIL		NIL / 2800 / NIL		
CIRCLING	MDA / (OCH)	NA				
	VIS (m)					

CHANGES: TA