

**INSTRUMENT APPROACH  
CHART (IAC)**

**PIRASSUNUNGA / Campo Fontenelle, MIL (SBYS)**

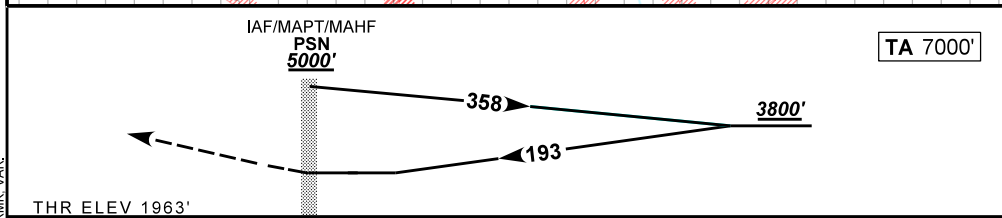
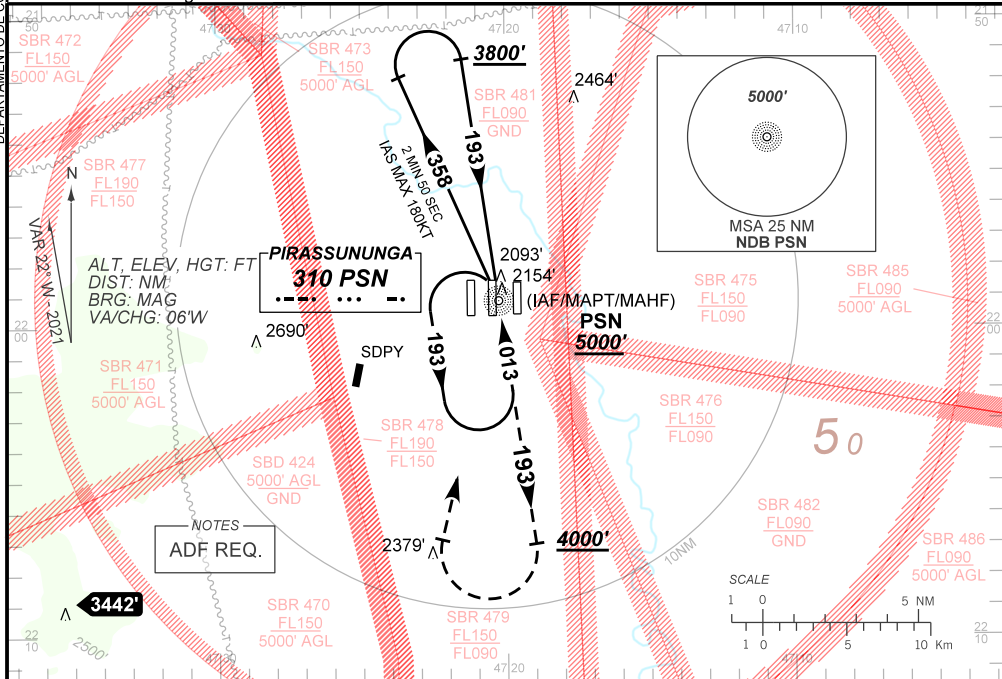
**NDB Y RWY 20C**

(CAT A,B,C)

**AD ELEV: 1976'**

ATIS <b>127.70</b>	APP ACADEMIA <b>120.10 122.40 122.80</b>	TWR ACADEMIA <b>118.30</b>	GNDC ACADEMIA <b>121.90</b>
NDB PSN <b>310 KHz</b>	FINAL CRS <b>193°</b>	N/A	N/A
MDA / (OCH): <b>3110' / (1150')</b>			

APCH Perdida: Subir para **5000'**. Manter QDR **193** NDB PSN até **4000'**. Após, curvar à DIREITA direto NDB PSN para espera.  
Missed APCH: Climb to **5000'**. Maintain **193** QDR PSN NDB until **4000'**. After, turn RIGHT direct to PSN NDB for holding.



RWY20C	NIL	Ground Speed (KT)	090	110	130	150	170	190
ALT	NIL	FPM	650			NA		
(HGT)	NIL	FAF-MAPT	NA					
STRAIGHT-IN	CAT	A	B	C	D	E		
NDB	MDA / (OCH)	3110' / (1150')				NA		
	ALS/NO ALS/ RVR ALS (m)	NIL / 2000 / NIL	NIL / 2400 / NIL	NIL / 5000 / NIL				
CIRCLING	MDA / (OCH)	NA						
	VIS (m)							

DEPARTAMENTO DE CONTROLE DO ESPAÇO AÉREO

CHANGES: EAC, FREQ, IDENT, LAYOUT, PROC, RIMK, VAR