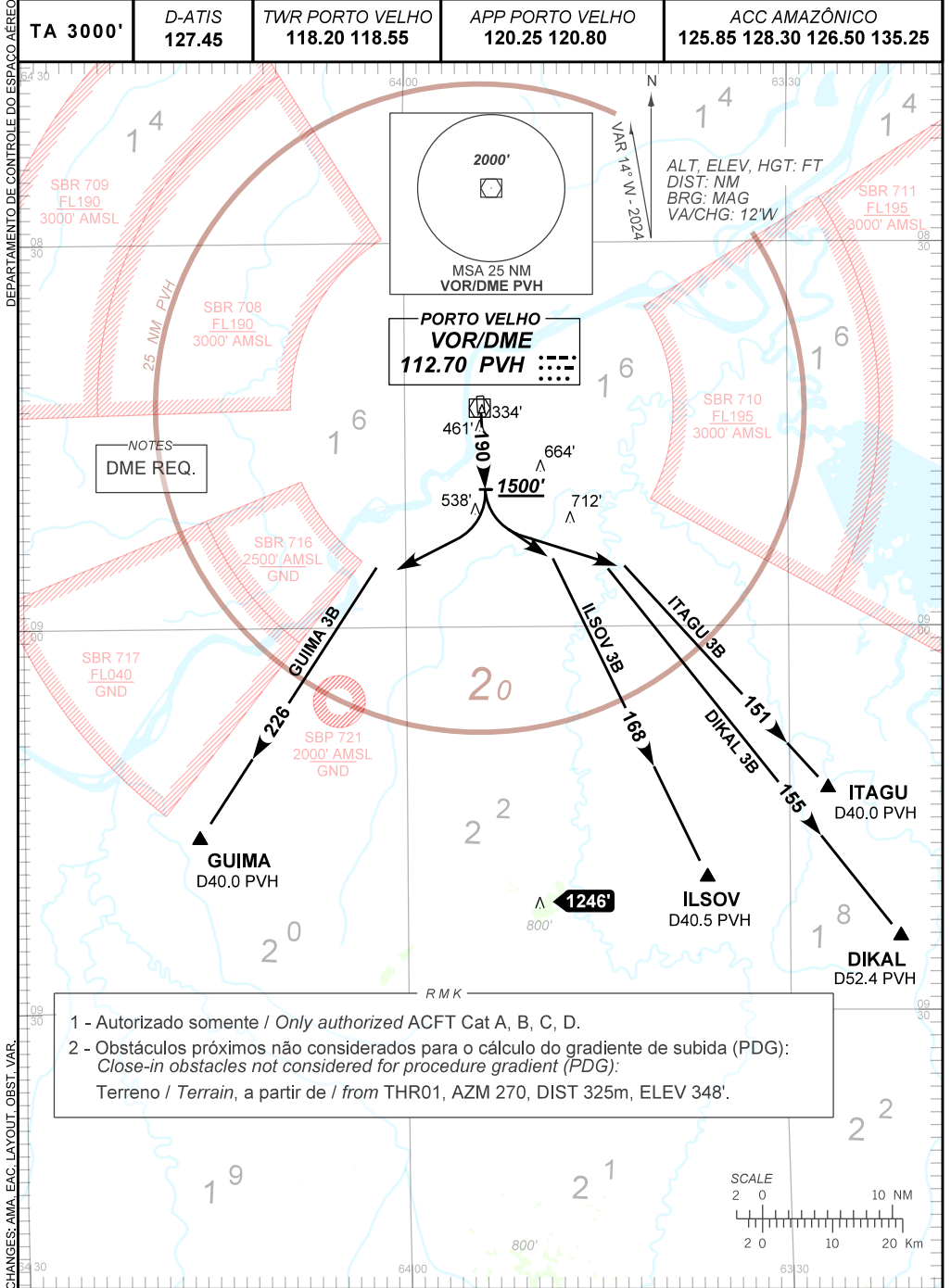


AD ELEV: 295'

DIKAL 3B - GUIMA 3B - ILSOV 3B - ITAGU 3B

| | | | | |
|----------|------------------|----------------------------------|----------------------------------|--|
| TA 3000' | D-ATIS 127.45 | TWR PORTO VELHO 118.20 118.55 | APP PORTO VELHO 120.25 120.80 | ACC AMAZÔNICO 125.85 128.30 126.50 135.25 |
|----------|------------------|----------------------------------|----------------------------------|--|



NOTES
DME REQ.

1 - Autorizado somente / Only authorized ACFT Cat A, B, C, D.
2 - Obstáculos próximos não considerados para o cálculo do gradiente de subida (PDG):
Close-in obstacles not considered for procedure gradient (PDG):
Terreno / Terrain, a partir de / from THR01, AZM 270, DIST 325m, ELEV 348'.

