

**INSTRUMENT APPROACH  
CHART (IAC)**

**ARACAJU / Santa Maria, INTL (SBAR)**

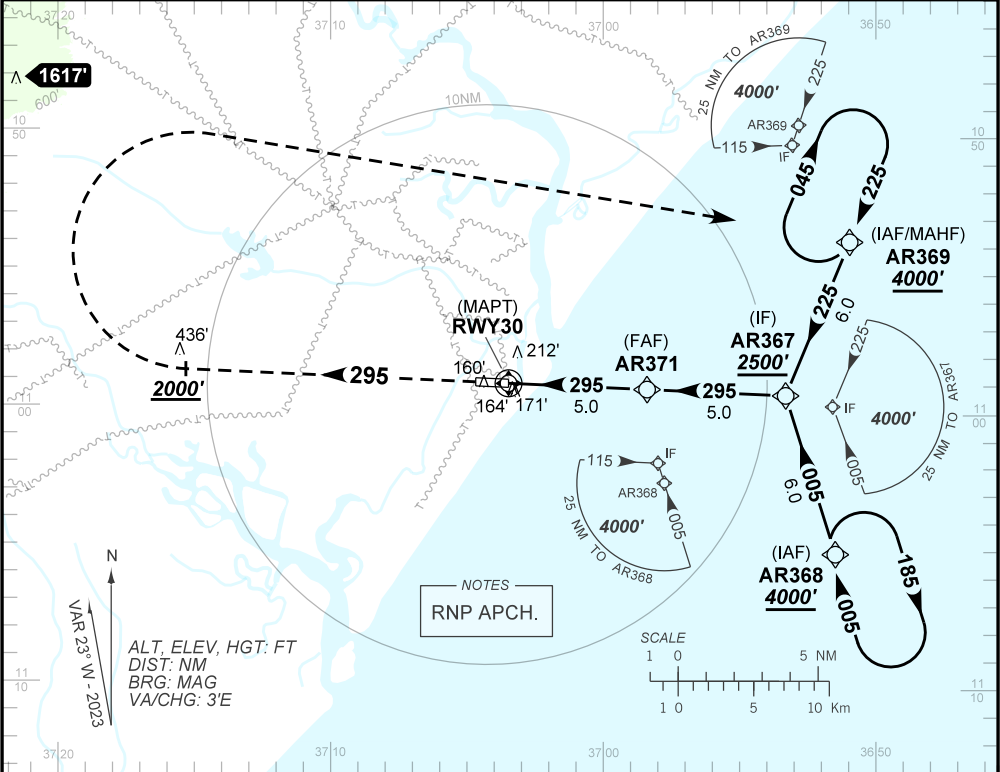
**AD ELEV: 23'**

**RNP Y RWY 30**

ATIS <b>NIL</b>	APP ARACAJU <b>120.30 129.25</b>	TWR ARACAJU <b>118.80 118.10</b>	GNDC <b>NIL</b>
TEMP LNAV/VNAV <b>MIN 10°C / MAX 48°C</b>	FINAL CRS <b>295°</b>	FAF: <b>1670'</b>	LNNAV/VNAV DA / (OCH): <b>332' / (310')</b>
		LNAV MDA / (OCH): <b>420' / (400')</b>	

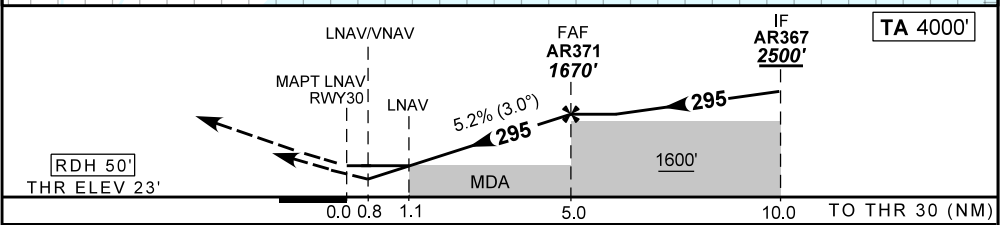
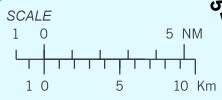
APCH Perdida: Subir para **4000'**. Manter rumo **295** até **2000'**. Após, curvar à DIREITA para espera em AR369.  
Missed APCH: Climb to **4000'**. Maintain course **295** until **2000'**. After, turn RIGHT for holding at AR369.

DEPARTAMENTO DE CONTROLE DO ESPAÇO AÉREO



ALT, ELEV, HGT: FT  
DIST: NM  
BRG: MAG  
VA/CHG: 3'E

NOTES  
RNP APCH.



RWY30	1.1	2.0	3.0	4.0	AR371		Ground Speed (KT)	090	110	130	150	170	190
ALT	420	710	1028	1347	1670		FPM	500	600	700	800	900	NA
(HGT)	400	687	1005	1324	1647		FAF-MAPT	NA					

STRAIGHT-IN	CAT	A	B	C	D	E
LNAV/VNAV	DA / (OCH)	332' / (310')				NA
	ALS/NO ALS/ RVR ALS (m)	NIL / 1400 / NIL				
LNAV	MDA / (OCH)	420' / (400')				
	ALS/NO ALS/RVR ALS (m)	NIL / 1600 / NIL		NIL / 1800 / NIL		
CIRCLING	MDA / (OCH)	NA				
	VIS (m)					

CHANGES: FREQ.

AIRAC AMDT 2404A1 18 APR 24

SBAR\_IAC\_00H 1/1  
IAC RNP Y RWY 30