

DEPARTURE CHART
INSTRUMENT (SID)

CURITIBA / Afonso Pena, INTL (SBCT)

RWY 11/29/15/33

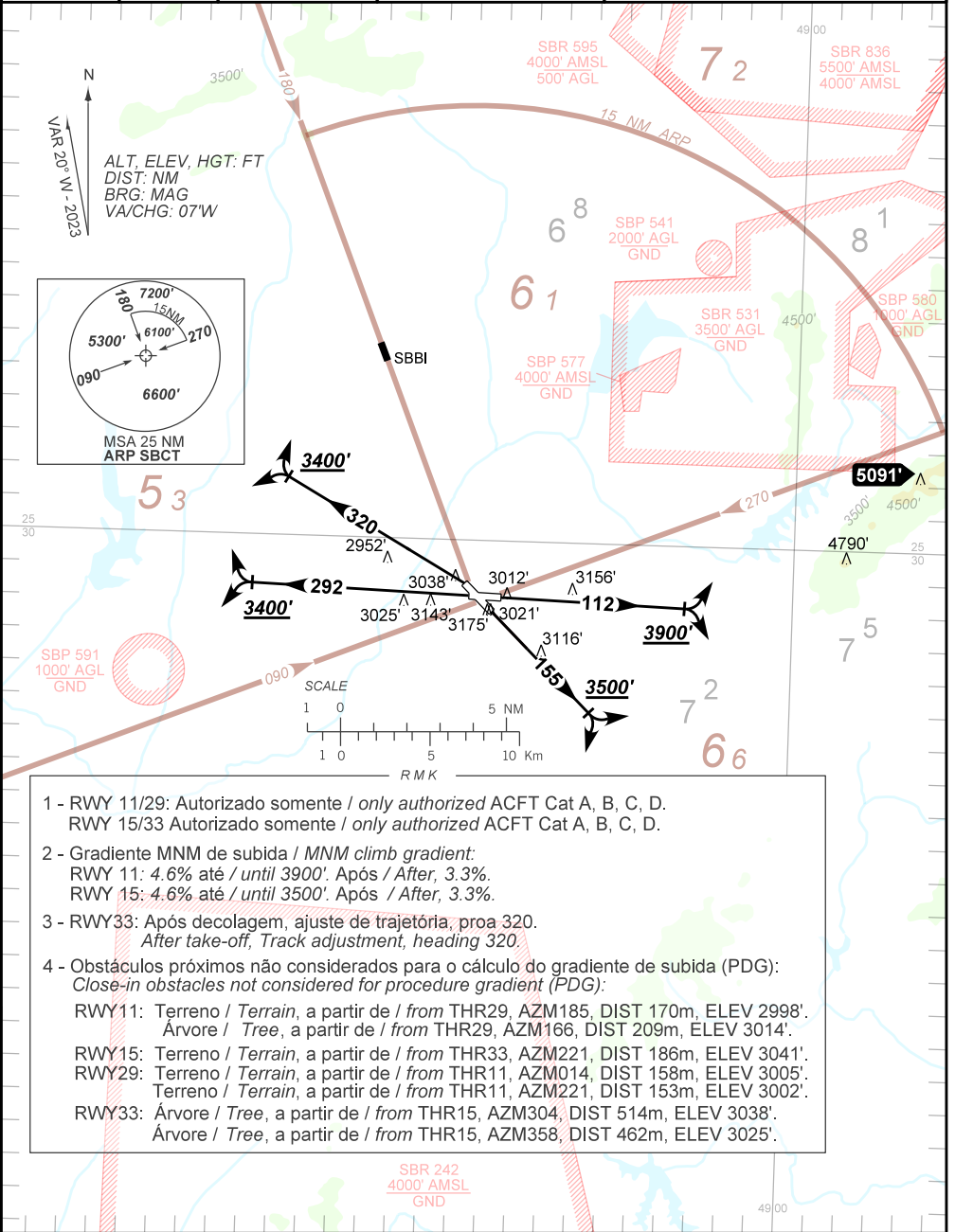
OMNI

AD ELEV: 2989'

TA 9000'	D-ATIS 127.80	TWR CURITIBA 118.15	APP CURITIBA 119.70 119.95 120.65 120.95 129.55 133.15	ACC CURITIBA 124.775 135.00 128.45 135.85 124.40 125.40 132.80 126.50 126.95 128.25 127.20 125.80
----------	---------------	---------------------	--	--

DEPARTAMENTO DE CONTROLE DO ESPAÇO AÉREO

CHANGES: AMA, EAC, MSA, OBST, PROC, RMK, VAR.



- 1 - RWY 11/29: Autorizado somente / only authorized ACFT Cat A, B, C, D.
RWY 15/33 Autorizado somente / only authorized ACFT Cat A, B, C, D.
- 2 - Gradiente MNM de subida / MNM climb gradient:
RWY 11: 4.6% até / until 3900'. Após / After, 3.3%.
RWY 15: 4.6% até / until 3500'. Após / After, 3.3%.
- 3 - RWY33: Após decolagem, ajuste de trajetória, proa 320.
After take-off, Track adjustment, heading 320.
- 4 - Obstáculos próximos não considerados para o cálculo do gradiente de subida (PDG):
Close-in obstacles not considered for procedure gradient (PDG):
RWY11: Terreno / Terrain, a partir de / from THR29, AZM185, DIST 170m, ELEV 2998'.
Árvore / Tree, a partir de / from THR29, AZM166, DIST 209m, ELEV 3014'.
RWY15: Terreno / Terrain, a partir de / from THR33, AZM221, DIST 186m, ELEV 3041'.
RWY29: Terreno / Terrain, a partir de / from THR11, AZM014, DIST 158m, ELEV 3005'.
Terreno / Terrain, a partir de / from THR11, AZM221, DIST 153m, ELEV 3002'.
RWY33: Árvore / Tree, a partir de / from THR15, AZM304, DIST 514m, ELEV 3038'.
Árvore / Tree, a partir de / from THR15, AZM358, DIST 462m, ELEV 3025'.