

CARTA DE APROXIMAÇÃO
POR INSTRUMENTOS (IAC)

SÃO PAULO/ GARULHOS - Gov. André Franco Montoro, INTL (SBGR)

INSTRUMENT APPROACH CHART (IAC)

RNAV(GNSS) Y RWY 27L

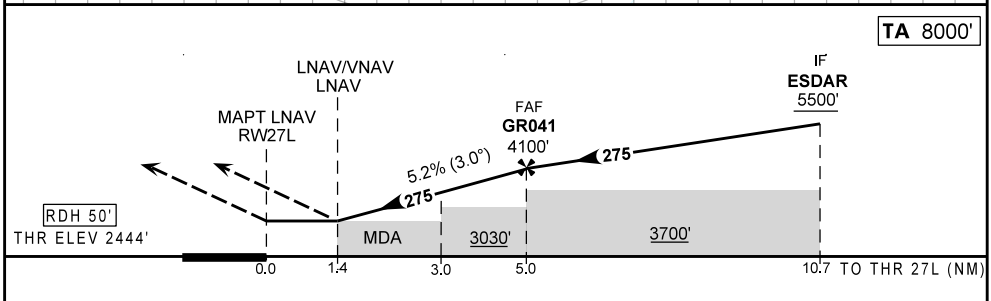
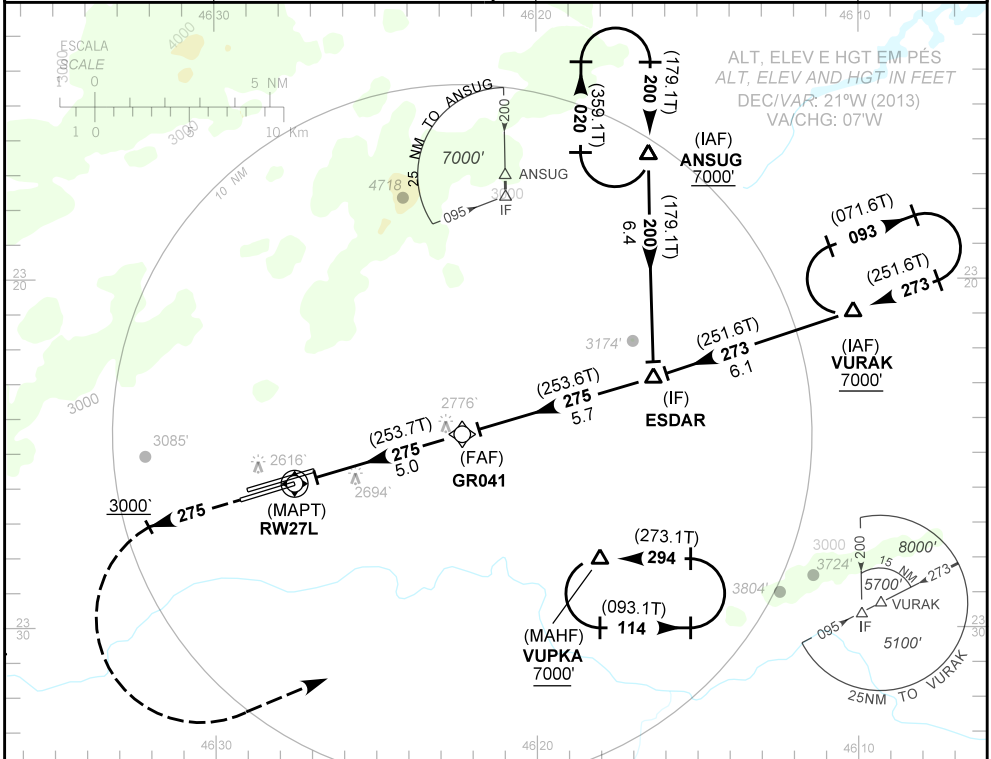
| | | | | |
|----------------|------------------|--|---|---------------------------------|
| AD ELEV: 2459' | D-ATIS 127.75 | APP SÃO PAULO 119.60 119.80 120.85 125.60 129.50 129.75 133.85 135.75 121.50 | TWR GUARULHOS 118.40 121.50 132.75 135.20 121.50 | GNDC GUARULHOS 121.70 126.90 |
|----------------|------------------|--|---|---------------------------------|

RMK: 1) Procedimento BARO-VNAV não autorizado abaixo de 0°C. 2) IAS MAX em ESDAR 230 Kt.

Aproximação Perdida: Subir para 7000', gradiente MNM 5%. Manter rumo 275 até 3000'. Após, curvar à esquerda para espera em VUPKA.

RMK: 1) BARO-VNAV procedure not authorized below 0°C. 2) MAX IAS at ESDAR 230 Kt.

Missed Approach: Climb to 7000', MNM gradient 5%. Mantain course 275 until 3000'. Then, turn left for holding at VUPKA.



| | | | | | | | | | | | | | |
|--------|------|------|------|------|-------|--|----------|-----|-----|-----|-----|-----|------|
| RWY27L | 1.4 | 2.0 | 3.0 | 4.0 | GR041 | | KT | 90 | 110 | 130 | 150 | 170 | 190 |
| ALT | 2940 | 3131 | 3449 | 3768 | 4100 | | FPM | 500 | 600 | 700 | 800 | 900 | 1000 |
| (HGT) | 496 | 687 | 1005 | 1324 | 1656 | | FAF-MAPT | NIL | | | | | |

| | | | | | | |
|-----------------------------|------------------------|-------------------|---|-------------------|---|---|
| POUSO DIRETO STRAIGHT-IN | CAT | A | B | C | D | E |
| | DA/OCH | 2940 / 500 | | | | |
| LNAV / VNAV | ALS/NO ALS/RVR ALS (m) | 1500 / 2300 / NIL | | | | |
| | MDA/OCH | 2940 / 500 | | | | |
| LNAV | ALS/NO ALS/RVR ALS (m) | 800 / 1600 / NIL | | 1500 / 2300 / NIL | | |
| | MDA/OCH | NA | | | | |
| CIRCULAR TO CIRCLE | MDA/OCH | NA | | | | |
| | VIS (m) | NA | | | | |

MODIFICAÇÕES / CHANGES: FM: PROC.