

**INSTRUMENT APPROACH
CHART (IAC)**

NATAL / Augusto Severo, MIL (SBNT)

AD ELEV: 171'

VOR Z RWY 12

D-ATIS 132.65	APP NATAL 119.30 119.65 120.65 129.80			TWR NATAL 118.70 122.80	GNDC NATAL 121.90
-------------------------	---	--	--	-----------------------------------	-----------------------------

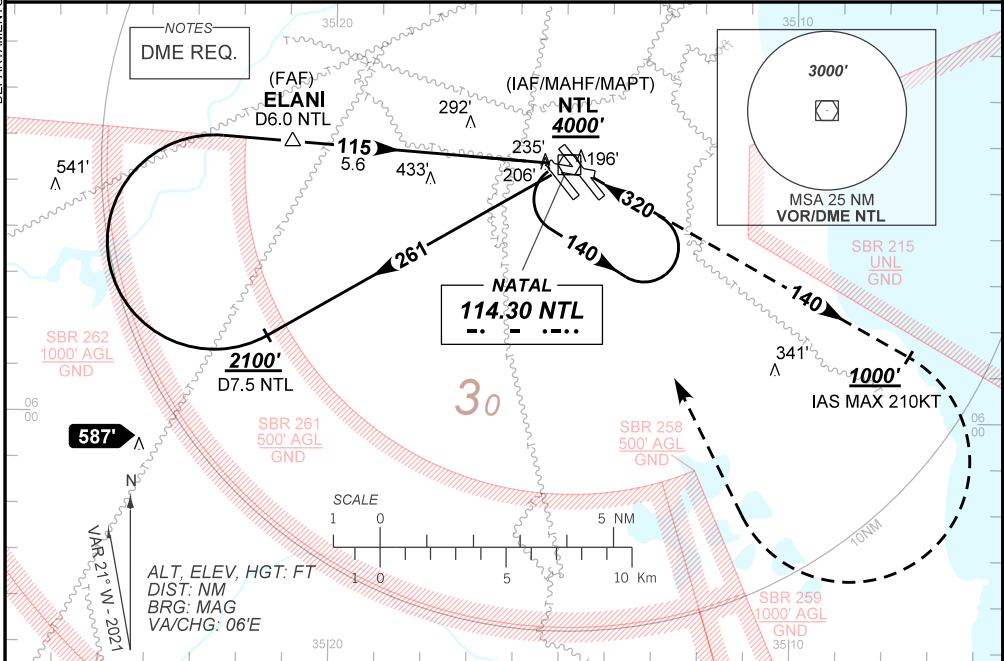
VOR NTL 114.30 MHz	FINAL CRS 115°	FAF: 2000'	N/A	VOR MDA / (OCH): 540' / (380')
------------------------------	--------------------------	----------------------	-----	--

APCH Perdida: 1) Subir para **4000'**. Manter a RDL **140** do VOR NTL até **1000'**. Após, curvar à DIREITA direto VOR NTL para espera. 2) IAS MAX 210 KT até cruzar **1000'**.

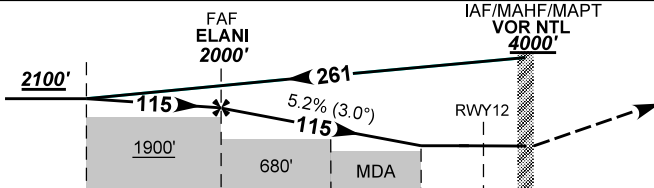
Missed APCH: 1) Climb to **4000'**. Maintain **140** RDL NTL VOR until **1000'**. After, turn RIGHT direct to NTL VOR for holding. 2) IAS MAX 210KT until cross **1000'**.

RMK: Para circular/Circling: IAS MAX 170KT.

DEPARTAMENTO DE CONTROLE DO ESPAÇO AEREO



TA 4000'



TO THR 12 (NM)	7.5	5.6	2.0	1.0	0.0	
TO NTL (DME)	7.9	6.0	2.4	1.4	0.4	

	ELANI	4.0	3.0	2.0	1.0	RWY12	Ground Speed (KT)	090	110	130	150	170	190
	2000	1493	1174	856	540	ALT	FPM	500	600	700	800	900	1000
	1861	1324	1005	687	380	(HGT)	FAF-MAPT	NA					

STRAIGHT-IN	CAT	A	B	C	D	E
	MDA / (OCH)	540' / (380')				
VOR	ALS/NO ALS/ RVR ALS (m)	NIL / 1600 / NIL		NIL / 1700 / NIL		
CIRCLING	MDA / (OCH)	650' / (490')	800' / (640')	890' / (730')	1000' / (840')	
	VIS (m)	1600	1600	3200	3600	4800

CHANGES: FREQ, LAYOUT, PROC, VAR