

**INSTRUMENT APPROACH
CHART (IAC)**

CURITIBA / Afonso Pena, INTL (SBCT)

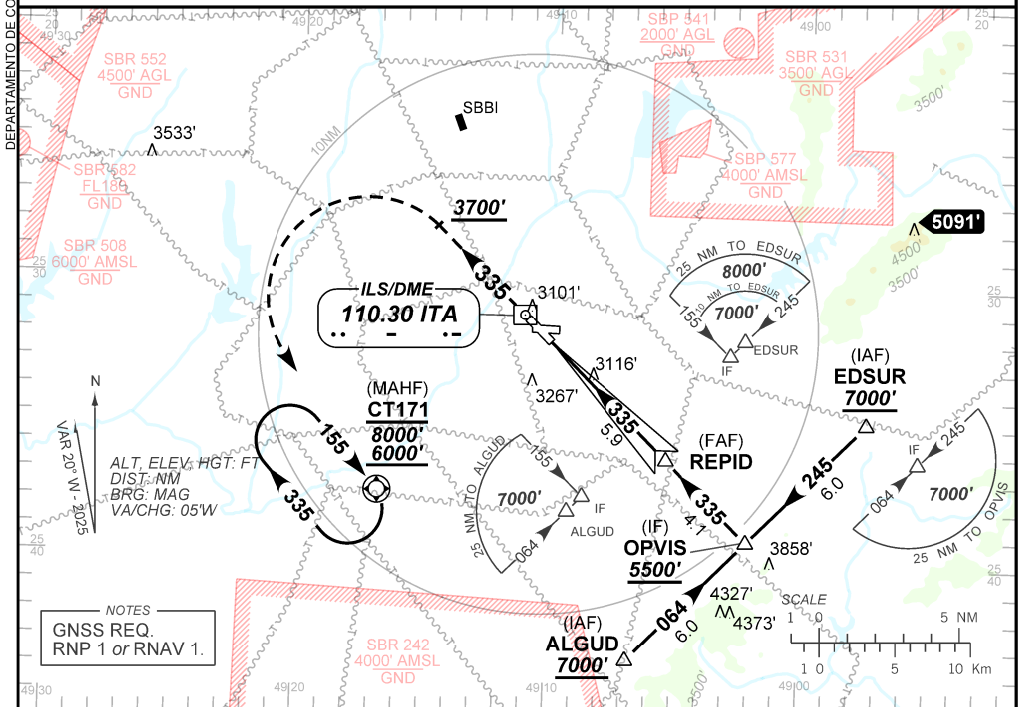
AD ELEV: 2989'

ILS W RWY 33

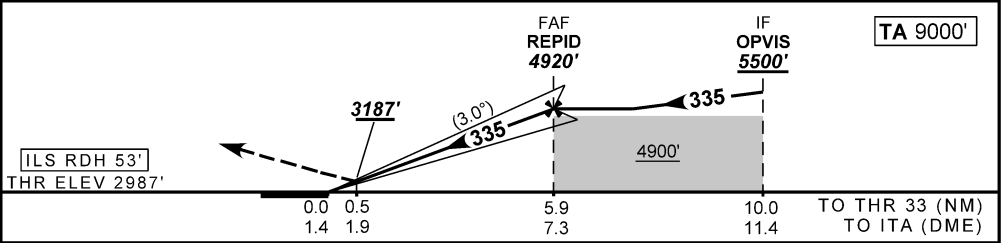
D-ATIS 127.80	APP CURITIBA 119.70 119.95 120.65 120.95 129.55 133.15			TWR CURITIBA 118.15	GNDC CURITIBA 121.90
ILS/DME ITA 110.30	FINAL CRS 335°	FAF: 4920'	CAT I DA / (OCH): 3187' / (200')	N/A	

APCH Perdida: Subir para **6000'** na proa **335** até **3700'**. Após, curvar à ESQUERDA direto CT171 para espera.

Missed APCH: Climb to **6000'** on heading **335** until **3700'**. After, turn **LEFT** direct CT171 for holding.



NOTES
GNSS REQ.
RNP 1 or RNAV 1.



RWY33	NIL	Ground Speed (KT)	090	110	130	150	170	190
ALT	NIL	FPM	NIL					
(HGT)	NIL	FAF-MAPT	NIL					

STRAIGHT-IN	CAT	A	B	C	D	E	
CAT I	DA / (OCH)	3187' / (200')					NA
	ALS/NO ALS/ RVR ALS (m)	NIL / 1200 / NIL					
CIRCLING	MDA / (OCH)	NA					
	VIS (m)						

CHANGES: EAC