

**INSTRUMENT APPROACH  
CHART (IAC)**

**GUARUJÁ / Base Aérea de Santos, MIL (SBST)  
RNP Z RWY 35**

**AD ELEV: 13'**

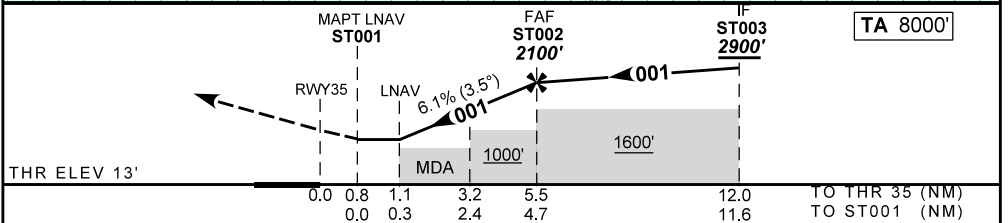
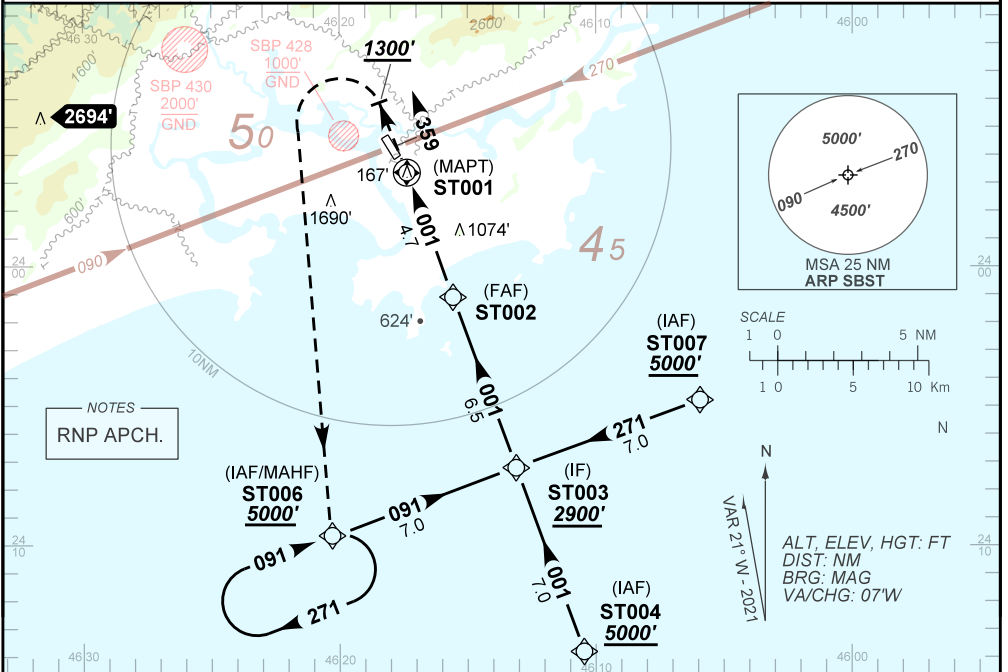
(CAT A,B,C)

ATIS NIL	APP SÃO PAULO 119.00 120.10 120.55 128.90		AFIS SANTOS 132.225 118.65	GNDC NIL
-------------	--	--	-------------------------------	-------------

N/A	FINAL CRS 001°	FAF 2100'	N/A	LNAV MDA / (OCH): 480' / (470')
-----	-------------------	--------------	-----	------------------------------------

APCH Perdida: 1) Subir para **5000'**. GRAD 5.0%. Manter curso **359** até passar **1300'**. Após, curvar à ESQUERDA direto ST006 para espera.  
 Missed APCH: 1) Climb to **5000'**. GRAD 5.0%. Maintain course **359** until passing **1300'**. Then, turn LEFT direct ST006 for holding.

RMK: 1) Aproximação perdida: IAS MAX 160KT. 2) Proibido circular pelo setor "E".  
 1) Missed Approach: IAS MAX 160KT. 2) Circling prohibited by "E" sector.



RWY35	1.1	2.0	3.2	4.0	5.0	ST002	Ground Speed (KT)	090	110	130	150	170	190
ALT	480	805	1252	1546	1916	2100	FPM	600	700	800	900	N/A	N/A
(HGT)	467	792	1239	1533	1903	2087	FAF-MAPT	NA					

STRAIGHT-IN	CAT	A	B	C	D	E
	MDA / (OCH)	480' / (470')			N/A	
LNAV	MALS/NO MALS/IRVR ALS (m)	NIL / 1600' / NIL		NIL / 2200' / NIL		N/A
CIRCLING	MDA / (OCH)	880' / (870')	1060' / (1050')	2090' / (2080')	N/A	
	VIS (m)	2000	2400	4800		

DEPARTAMENTO DE CONTROLE DO ESPAÇO AÉREO