

**INSTRUMENT APPROACH
CHART (IAC)
AD ELEV: 13'**

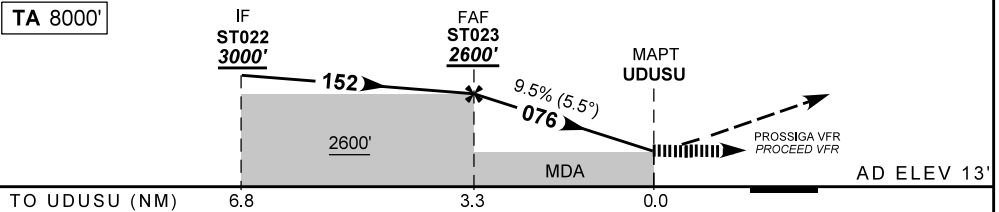
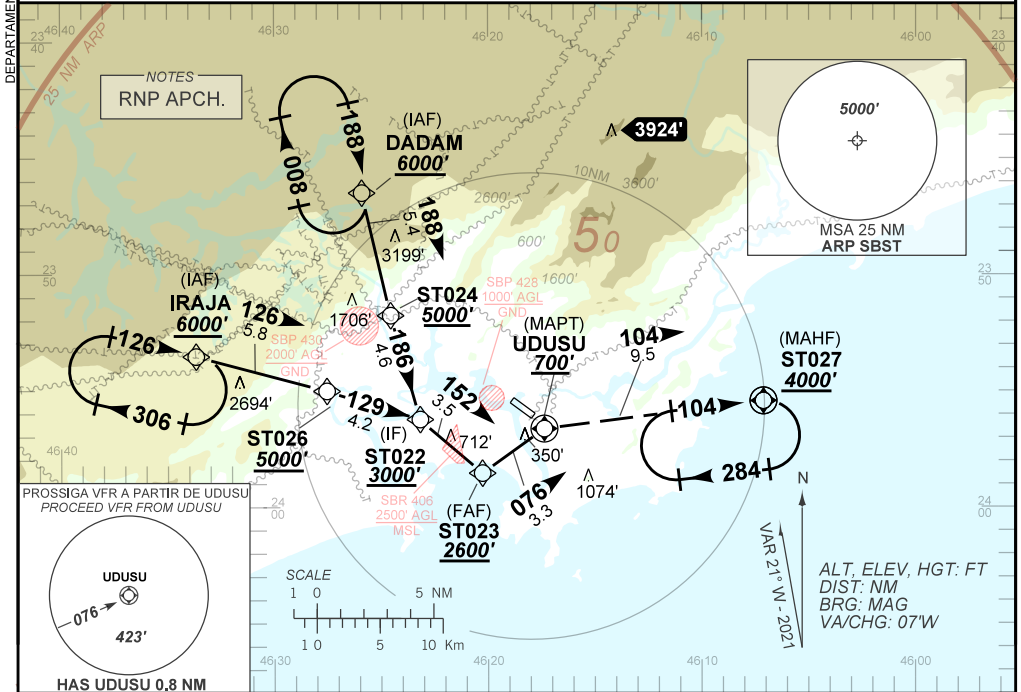
GUARUJÁ / Base Aérea de Santos, MIL (SBST)

**RNP 076
PINS - (CAT H)**

ATIS NIL	APP SÃO PAULO 119.60 122.75 129.00 133.85 135.75	AFIS SANTOS 118.65 132.225	GNDC NIL
N/A	FINAL CRS 076°	FAF: 2600'	LNNAV MDA / (OCH): 700' / (690')

APCH Perdida: Subir para **4000'** curvando à DIREITA no rumo **105** até ST027 para espera.
Missed APCH: Climbing **RIGHT** turn to **4000'**. Maintain course **105** up to ST027 for holding.

RMK: 1) Requerido FPL "Y" com mudança de regras de voo em UDUSU.
1) FPL "Y" required with flight rules change at UDUSU.



		ST023	2.0	1.0	UDUSU	KT	060	070	080	090
		2600	1813	1206	ALT	FPM	600	700	800	900
		2587	1800	1193	(HGT)	FAF-MAPT	NA			

STRAIGHT-IN	CAT	H
LNNAV	MDA / (OCH)	700' / (690')
	VIS (m)	1500
CIRCLING	MDA / (OCH)	NA
	VIS (m)	

CHANGES: IDENT, FREQ.

AMDT 2105A3 20 MAY 21

SBST_IAC_000 1/1
IAC RNP 076