

**INSTRUMENT APPROACH CHART (IAC)**

**SÃO PAULO / Guarulhos - Gov. André Franco Montoro, INTL (SBGR)**

**ILS O CAT I & II RWY 09L**

**AD ELEV: 2461'**

D-ATIS <b>127.75</b>	APP SÃO PAULO <b>129.75 119.15 120.45 120.85 133.85</b>	TWR GUARULHOS <b>118.40 132.75 135.20</b>	GNDG GUARULHOS <b>121.70 126.90</b>
-------------------------	--	--	--

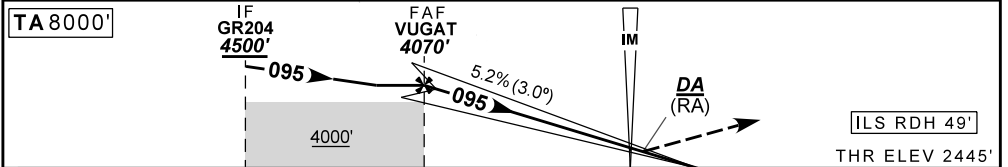
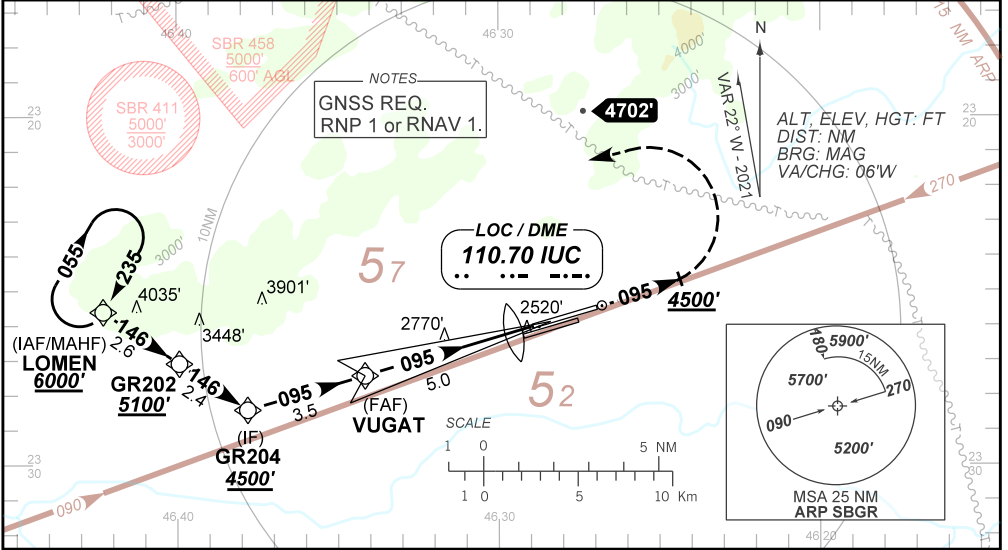
LOC IUC <b>110.70 MHz</b>	FINAL CRS <b>095°</b>	FAF <b>4070'</b>	CAT I & II DA / (OCH): <b>REFER TO MNM</b>	<b>N/A</b>
------------------------------	--------------------------	---------------------	---	------------

APCH Perdida: Subir para **6000'**. Manter rumo **095** até **4500'**. Após, curvar à ESQUERDA direto LOMEN para espera.

Missed APCH: Climb to **6000'**. Maintain course **095** until **4500'**. Then, turn LEFT direct to LOMEN for holding.

RMK:  
(\*) RVR ALS 550m para aproximação utilizando Diretor de Voo, Piloto Automático ou Head-Up Display (HUD);  
(\*) RVR ALS 550m for approach using a Flight Director, Autopilot or Head-Up Display (HUD);

ARREMETIDA VISUAL RWY 09R: Subir para **6000'**. Manter proa **095** até **3300'**. Após, curvar à DIREITA proa **140** e aguardar instrução ATC.  
VISUAL GO-AROUND RWY 09R: Climb to **6000'**. Maintain heading **095** until **3300'**. Then, turn RIGHT heading **140** and expect ATC instructions.



TO THR 09L (NM)	8.5	5.0	0.2	0.0
TO IUC (DME)	8.7	5.2	0.4	0.2

VUGTA	4.0	3.0	2.0	0.5	IM	RWY09L	Ground Speed (KT)	90	110	130	150	170	190
4070	3768	3450	3131	2645	2558	ALT	FPM	500	600	700	800	900	1000
1625	1323	1005	686	200	113	(HGT)	FAF-MAPT	NA					

STRAIGHT-IN	CAT	A	B	C	D	E
CAT II	DA / (OCH) / RA	2545' / (100') / 107'				
	ALS/NO ALS/ RVR ALS (m)	NIL / NIL / 300				
CAT I	DA / (OCH)	2645' / (200')				
	ALS/NO ALS/ RVR ALS (m)	800 / 1200 / 700*				
CIRCLING	MDA / (OCH)	NA				
	VIS (m)	NA				

DEPARTAMENTO DE CONTROLE DO ESPAÇO AÉREO  
CHANGES: PROC. IDENT. MSA. DEC.