

**INSTRUMENT APPROACH
CHART (IAC)**

ARACAJU / Santa Maria, INTL (SBAR)

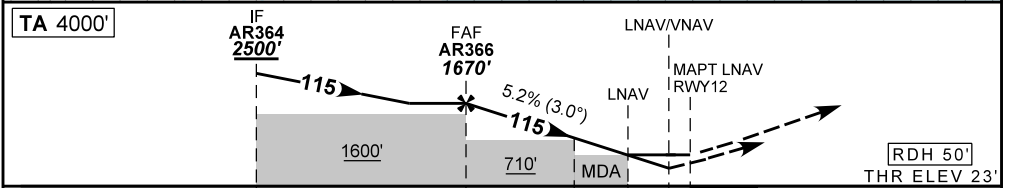
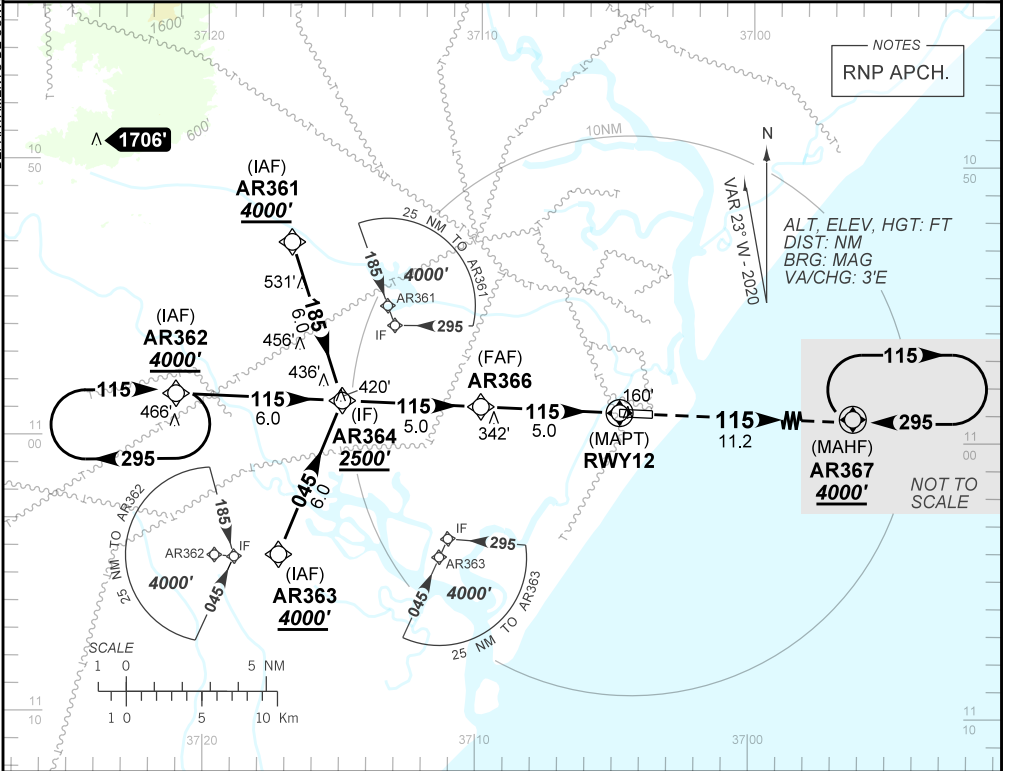
AD ELEV: 23'

RNP Z RWY 12

ATIS NIL	APP ARACAJU 120.30 129.25	TWR ARACAJU 118.10 118.80	GND C NIL
TEMP LNAV/VNAV MIN 10°C / MAX 48°C	FINAL CRS 115°	FAF: 1670'	LNAV/VNAV DA / (OCH): 423' / (400')
LNAV		LNAV MDA / (OCH): 570' / (550')	

APCH Perdida: Subir para **4000'** no curso **115** para espera em AR367.

Missed APCH: Climb to **4000'** on course **115** for holding at AR367.



TO THR 12 (NM)	10.0	5.0	2.1	1.6	1.1	0.0
	AR366	4.0	3.0	2.1	1.6	RWY12
	1670	1347	1028	742	570	ALT
	1647	1324	1005	719	550	(HGT)
Ground Speed (KT)	090	110	130	150	170	190
FPM	500	600	700	800	900	NA
FAF-MAPT	NA					

STRAIGHT-IN	CAT	A	B	C	D	E
LNAV/VNAV	DA / (OCH)	423' / (400')				NA
LNAV	ALS/NO ALS/ RVR ALS (m)	NIL / 1800 / NIL				
	MDA / (OCH)	570' / (550')				
	ALS/NO ALS/RVR ALS (m)	NIL / 1800 / NIL		NIL / 2500 / NIL		
CIRCLING	MDA / (OCH)	NA				
	VIS (m)					

AIRAC AMDT 2404A1 18 APR 24

SBAR_IAC_00G 1/1
IAC RNP Z RWY 12

DEPARTAMENTO DE CONTROLE DO ESPAÇO AÉREO

CHANGES: FREQ.