

**INSTRUMENT APPROACH CHART (IAC)**

**PORTO ALEGRE / Salgado Filho, INTL (SBPA)**

**AD ELEV: 12'**

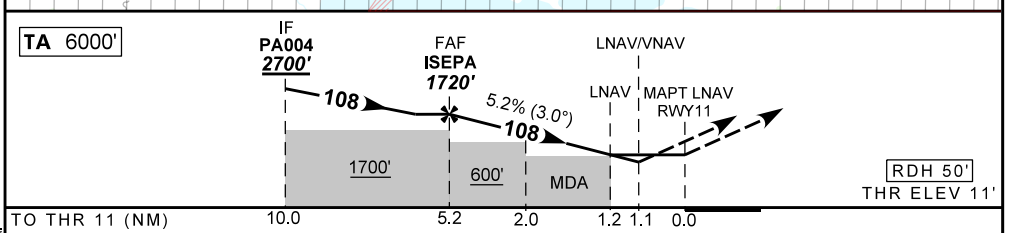
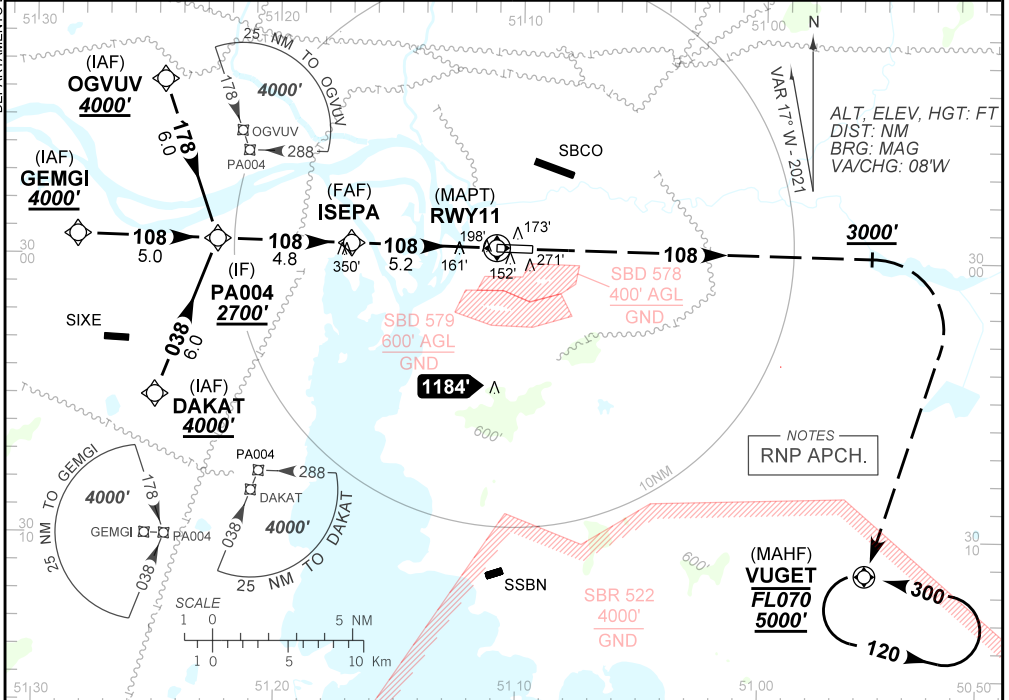
**RNP Z RWY 11**

D-ATIS <b>132.35</b>	APP PALEGRE <b>119.00 120.10 120.55 128.90</b>	TWR PALEGRE <b>118.10</b>	GNDC PALEGRE <b>121.90</b>
-------------------------	---	------------------------------	-------------------------------

TEMP LNAV/VNAV <b>MIN -10° C / MAX 50° C</b>	FINAL CRS <b>108°</b>	FAF: <b>1720'</b>	LNAV/VNAV DA / (OCH): <b>407' / (396')</b>	LNAV: MDA / (OCH): <b>450' / (440')</b>
---	--------------------------	----------------------	---	--

APCH Perdida: Subir para **5000'**. Manter proa **108** até **3000'**. Curvar à DIREITA direto VUGET para espera.  
Missed APCH: Climb to **5000'**. Maintain heading **108** up to **3000'**. Turn RIGHT direct to VUGET for holding.

RMK: NIL



ISEPA	4.0	3.0	2.0	1.2	1.1	RWY11	Ground Speed (KT)	090	110	130	150	170	190	
	1720	1335	1016	698	450	407		FPM	500	600	700	800	900	1000
	1709	1324	1005	687	440	396		FAF-MAPT	NA					

STRAIGHT-IN	CAT	A	B	C	D	E
	LNAV/VNAV	DA / (OCH)	407' / (396')			NA
LNAV	MDA / (OCH)	450' / (440')				
	CIRCLING	MDA / (OCH)	NA			