

**INSTRUMENT APPROACH  
CHART (IAC)**

**CANOAS / Campo Nossa Senhora de Fátima, MIL (SBCO)**

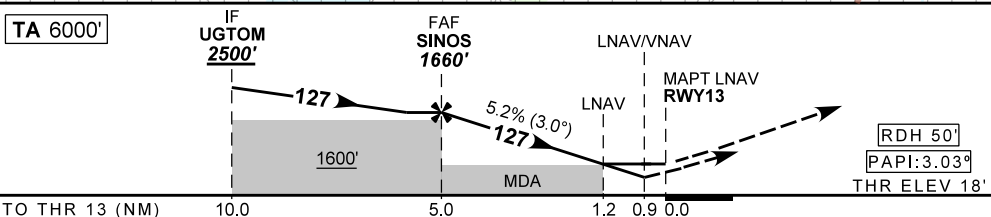
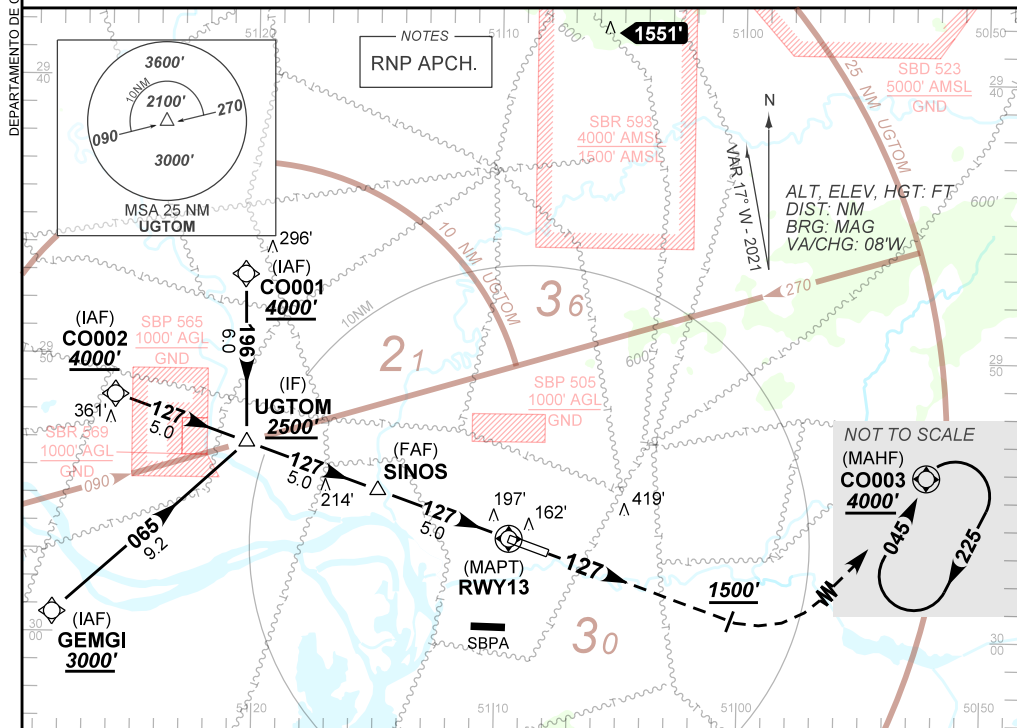
**AD ELEV: 26'**

**RNP Z RWY 13**

ATIS <b>NIL</b>	APP PALEGRE <b>119.00 120.10 120.55 128.90</b>	TWR CANOAS <b>118.50 122.80 (MIL)</b>	GNDC CANOAS <b>121.70</b>
TEMP LNAV/VNAV <b>MIN -10°C / MAX 50° C</b>	FINAL CRS <b>127°</b>	FAF: <b>1660'</b>	LNAV/VNAV <b>DA / (OCH): 357' / (339')</b>
		LNAV <b>MDA / (OCH): 450' / (440')</b>	

APCH Perdida: Subir para **4000'**. Manter rumo **127°** até **1500'**. Após, curvar à ESQUERDA direto CO003 para espera.

Missed APCH: Climb to **4000'**. Maintain course **127°** until **1500'**. After, turn **LEFT** direct CO003 for holding.



TO THR 13 (NM)	10.0	5.0	1.2	0.9	0.0										
	SINOS 4.0	3.0	2.0	1.2	RWY13	Ground Speed (KT)	090	110	130	150	170	190			
	1660	1342	1023	705	450	FPM	500	600	700	800	900	1000			
	1642	1324	1005	687	440	FAF-MAPT	NA								

STRAIGHT-IN	CAT	A	B	C	D	E
	DA / (OCH)	357' / (339')				NA
LNAV/VNAV	ALS/NO ALS/RVR ALS (m)	800 / 1500 / NIL				NA
	MDA / (OCH)	450' / (440')				NA
LNAV	ALS/NO ALS/RVR ALS (m)	800 / 1600 / NIL		1300 / 2000 / NIL		
	MDA / (OCH)	NA				
CIRCLING	MDA / (OCH)	NA				
	VIS (m)	NA				

CHANGES: EAC, LAYOUT, OCH.

AIRAC AMDT 2405A1 16 MAY 24

SBCO\_IAC\_01B 1/1  
IAC RNP Z RWY 13