

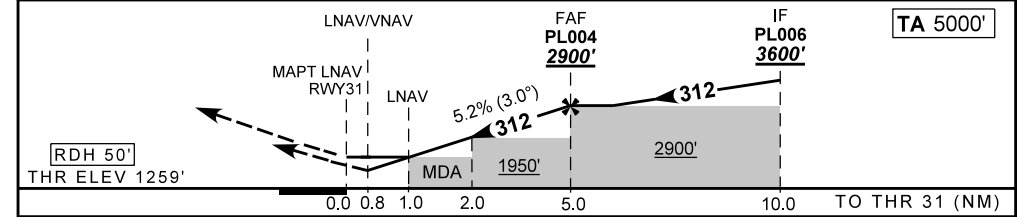
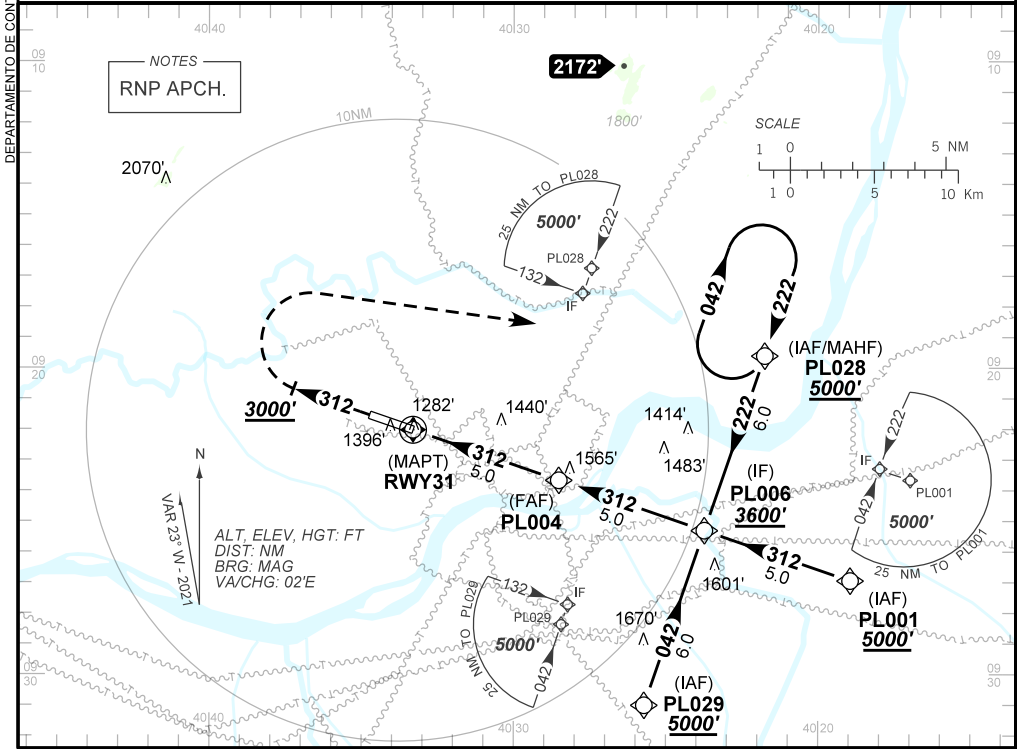
**INSTRUMENT APPROACH
CHART (IAC)**

PETROLINA / Senador Nilo Coelho (SBPL)

AD ELEV: 1263'

RNP RWY 31

ATIS NIL	APP NIL	AFIS PETROLINA 125.70	GNDC NIL
TEMP LNAV/VNAV MIN 10°C / MAX 50°C	FINAL CRS 312°	FAF: 2900'	LNAV/VNAV DA / (OCH): 1551' / (292')
APCH Perdida: Subir para 5000' . Manter proa 312 até 3000' . Após, curvar à DIREITA direto PL028 para espera.		LNAV MDA / (OCH): 1640' / (380')	
Missed APCH: Climb to 5000' . Maintain heading 312 until 3000' . After, turn RIGHT direct to PL028 for holding.			



RWY31	1.0	2.0	3.0	4.0	PL004		Ground Speed (KT)	090	110	130	150	170	190
ALT	1640	1950	2263	2583	2900		FPM	500	600	700	800	900	NA
(HGT)	380	691	1005	1324	1641		FAF-MAPT	NIL					

STRAIGHT-IN	CAT	A	B	C	D	E
LNAV/VNAV	DA / (OCH)	1551' / (292')				
	ALS/NO ALS/ RVR ALS (m)	NIL / 1400 / NIL				
LNAV	MDA / (OCH)	1640' / (380')				
	ALS/NO ALS/ RVR ALS (m)	NIL / 1600 / NIL		NIL / 1700 / NIL		
CIRCLING	MDA / (OCH)	NA				
	VIS (m)	NA				

CHANGES: LAYOUT, VAR.

DEPARTAMENTO DE CONTROLE DO ESPAÇO AÉREO