

**INSTRUMENT APPROACH
CHART (IAC)**

NATAL / Campo Augusto Severo, MIL (SBNT)

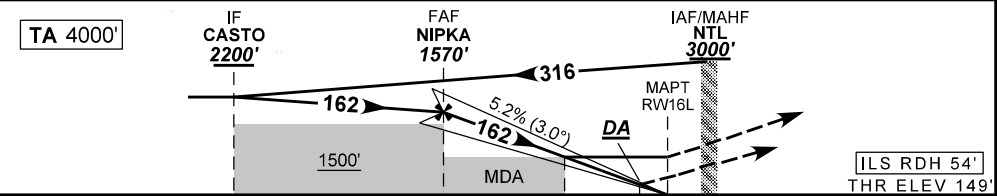
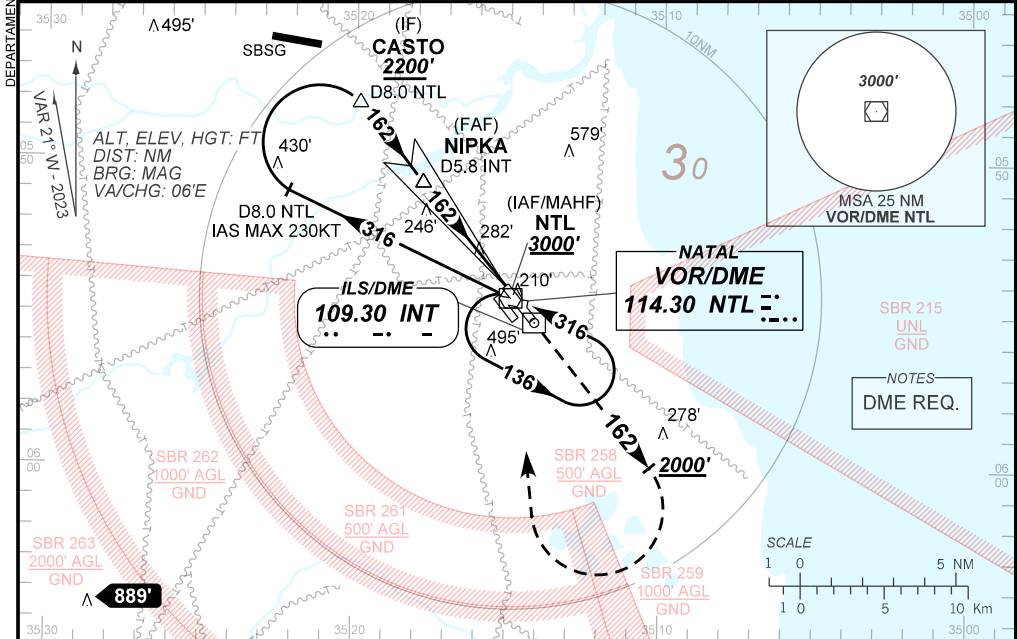
AD ELEV: 169'

ILS X or LOC X RWY 16L

D-ATIS 132.65	APP NATAL 119.30 119.65 120.65 129.80		TWR NATAL 118.70 122.80	GNDC NATAL 121.90
ILS/DME INT 109.30 MHz	FINAL CRS 162°	FAF: 1570'	CAT I DA / (OCH): REFER TO MNM	LOC MDA / (OCH): 530' / (390')

APCH Perdida: Subir para **3000'**. Manter a proa **162** até **2000'**. Após, curvar à DIREITA direto VOR NTL para espera.

Missed APCH: Climb to **3000'**. Maintain heading **162** until **2000'**. After, turn RIGHT direct NTL VOR for holding.



TO THR 16L (NM)	7.6	4.3	1.1	0.5	0.0
TO INT (DME)	9.1	5.8	2.6	2.0	1.5

	NIPKA	4.0	3.0	2.0	1.1	RWY16L	Ground Speed (KT)	090	110	130	150	170	190
		1570	1477	1158	840	530	FPM	500	600	700	800	900	1000
		1421	1328	1009	691	390	(HGT)	FAF-MAPT	NA				

STRAIGHT-IN	CAT	A	B	C	D	E
	DA / (OCH)	349' / (200')				389' / (240')
CAT I	ALS/NO ALS/ RVR ALS (m)	NIL / 1200 / NIL				
	MDA / (OCH)	530' / (390')				
LOC	ALS/NO ALS/ RVR ALS (m)	NIL / 1600 / NIL		NIL / 1800 / NIL		
	MDA / (OCH)	NA				
CIRCLING	MDA / (OCH)	NA				
	VIS (m)	NA				

CHANGES: LAYOUT.