

STANDARD DEPARTURE CHART
INSTRUMENT (SID)

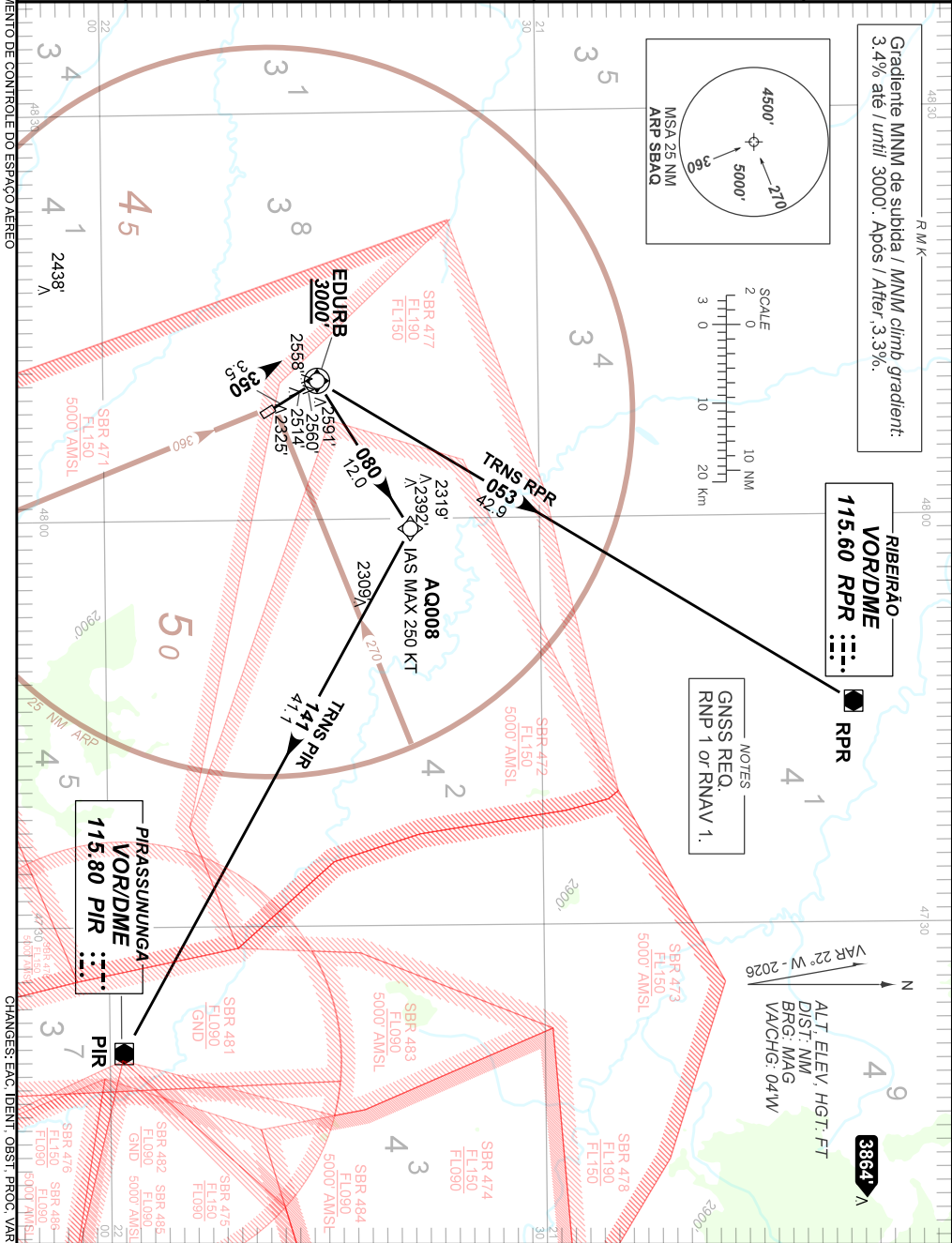
ARARAQUARA / Bartolomeu de Gusmão (SBAQ)

RWY 35

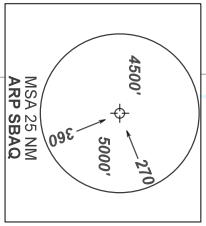
AD ELEV: 2334'

RNAV EDURB 3A

TA 7000'	ATIS NIL	AFIS ARARAQUARA 125.925	APP ACADEMIA 120.10 122.40	ACC BRASÍLIA 126.80 128.50 128.30 133.75	ACC CURITIBA 135.10 125.075
----------	----------	-------------------------	----------------------------	--	-----------------------------



Gradiente MNM de subida / MNM climb gradient:
3.4% até / until 3000'. Após / After, 3.3%.



RIBEIRÃO
VORDME
115.60 RPR

RPR

NOTES
GNSS REQ.
RNP 1 or RNAV 1.

PIRASSUNUNGA
VORDME
115.80 PIR

PIR

VAR 22° W - 2026
N
ALT. ELEV. HGT. FT
DIST: NM
BRG: MAG
VAICHG: 04 W
3864' A

DEPARTAMENTO DE CONTROLE DO ESPAÇO AEREO