

**INSTRUMENT APPROACH  
CHART (IAC)**

**SALVADOR / Deputado Luís Eduardo Magalhães, INTL (SBSV)**

**AD ELEV: 66'**

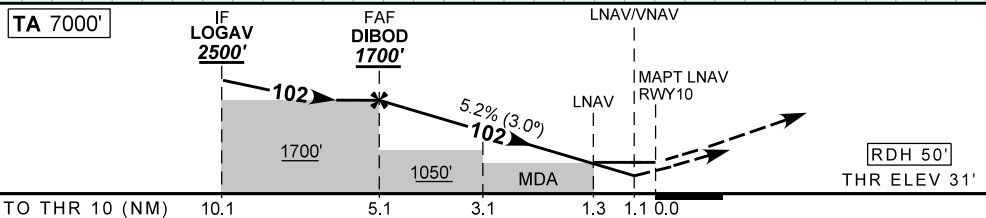
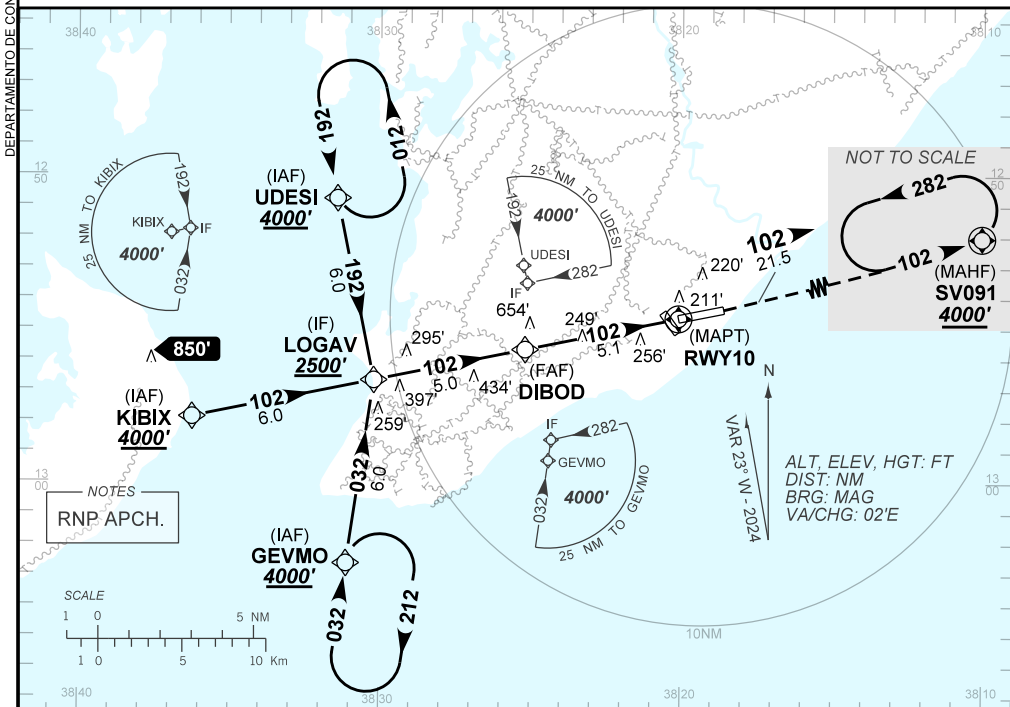
**RNP RWY 10**

D-ATIS <b>127.775</b>	APP SALVADOR <b>119.35 119.80 120.80 129.45</b>	TWR SALVADOR <b>118.60 118.95 121.10</b>	GNDC SALVADOR <b>121.90</b>
--------------------------	--	---	--------------------------------

TEMP LNAV/VNAV <b>MIN 0°C / MAX 46°C</b>	FINAL CRS <b>102°</b>	FAF: <b>1700'</b>	LNAV/VNAV DA / (OCH): <b>417' / (386')</b>	LNAV MDA / (OCH): <b>500' / (470')</b>
---	--------------------------	----------------------	---	---

APCH Perdida: Subir para **4000'**. Manter rumo **102** até SV091 para espera.

Missed APCH: Climb to **4000'**. Maintain course **102** until SV091 for holding.



	DIBOD	4.0	3.1	2.0	1.3	RWY10	Ground Speed (KT)	090	110	130	150	170	190
	1700	1355	1057	718	500	ALT	FPM	500	600	700	800	900	NA
	1669	1324	1026	687	470	(HGT)	FAF-MAPT	NIL					

STRAIGHT-IN	CAT	A	B	C	D	E
	DA / (OCH)	417' / (386')				NA
LNAV/VNAV	NIL / 1800 / NIL					
MDA / (OCH)	500' / (470')					
LNAV	ALS/NO ALS/ RVR ALS (m)	NIL / 1800 / NIL		NIL / 2200 / NIL		
CIRCLING	MDA / (OCH)	NA				
	VIS (m)					

CHANGES: ATIS