

**INSTRUMENT APPROACH
CHART (IAC)**

SÃO PAULO / Guarulhos - Gov. André Franco Montoro, INTL (SBGR)

AD ELEV: 2461'

RNP X RWY 28L

D-ATIS 127.75	APP SÃO PAULO 119.15 120.85 122.75 123.25 129.00 129.75	TWR GUARULHOS 118.40 132.75 135.20	GNDC GUARULHOS 121.70 126.90
-------------------------	---	--	--

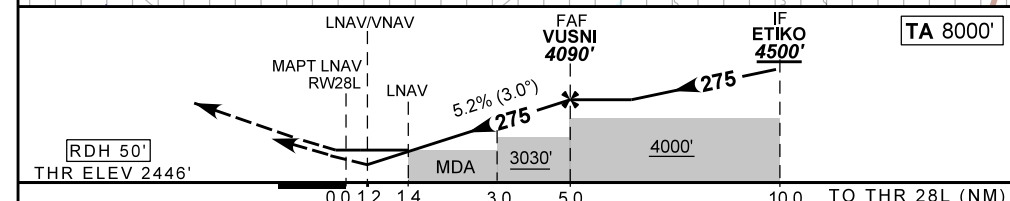
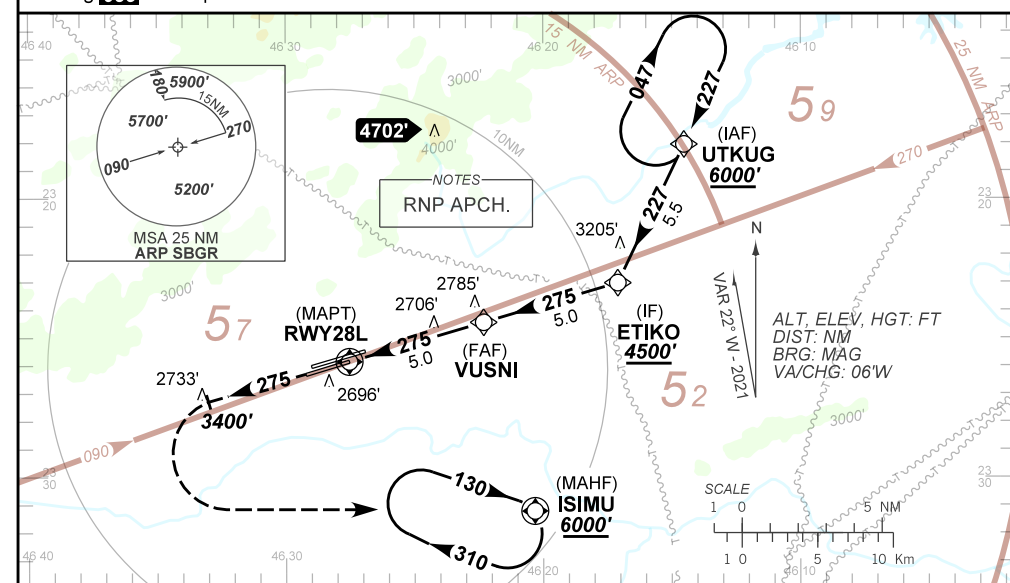
TEMP LNAV/VNAV MIN -10° C / MAX 50° C	FINAL CRS 275°	FAF: 4090'	LNAV/VNAV DA / (OCH): 2849' / (403')	LNAV MDA / (OCH): 2950' / (510')
---	--------------------------	----------------------	--	--

APCH Perdida: Subir para **6000'**. Manter rumo **275** até **3400'**. Após, curvar à ESQUERDA direto ISIMU para espera. IAS MAX 230 KT.

Missed APCH: Climb to **6000'**. Maintain course **275** until **3400'**. After, turn LEFT direct ISIMU for holding. IAS MAX 230KT.

ARREMETIDA VISUAL RWY28R: Subir para **6000'**. Manter proa **275** até atingir **6000'**. Após, curvar à DIREITA proa **085** e aguardar instruções ATC.

VISUAL GO AROUND 28R: Climb to **6000'**. Maintain heading **275** until reaching **6000'**. Then, turn RIGHT heading **085** and expect ATC instructions.



RWY28L	1.2	2.0	3.0	4.0	VUSNI		Ground Speed (KT)	090	110	130	150	170	190
ALT	2849	3133	3452	3770	4090		FPM	500	600	700	800	900	NA
(HGT)	403	687	1006	1324	1644		FAF-MAPT	NA					

STRAIGHT-IN	CAT	A	B	C	D	E
LNAV/VNAV	DA / (OCH)	2849' / (403')				NA
	ALS/NO ALS/ RVR ALS (m)	1200 / 1900 / NIL				
LNAV	MDA / (OCH)	2950' / (510')				
	ALS/NO ALS/ RVR ALS (m)	1200 / 1900 / NIL		1600 / 2400 / NIL		
CIRCLING	MDA / (OCH)	NA				
	VIS (m)	NA				

CHANGES: LAYOUT, THR.

DEPARTAMENTO DE CONTROLE DO ESPAÇO AÉREO