

**INSTRUMENT APPROACH CHART (IAC)**

**SÃO PEDRO DA ALDEIA / Tenente Jorge Henrique Möller, MIL (SBES)**

**RNP Z RWY 25**

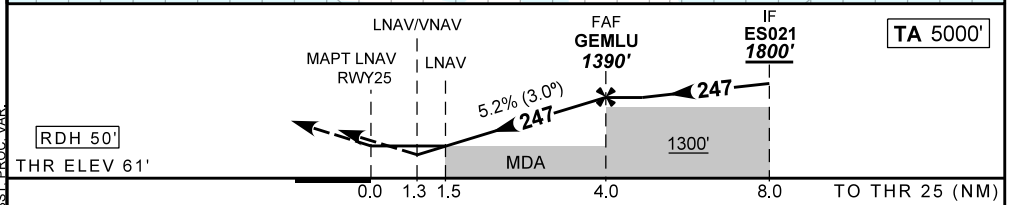
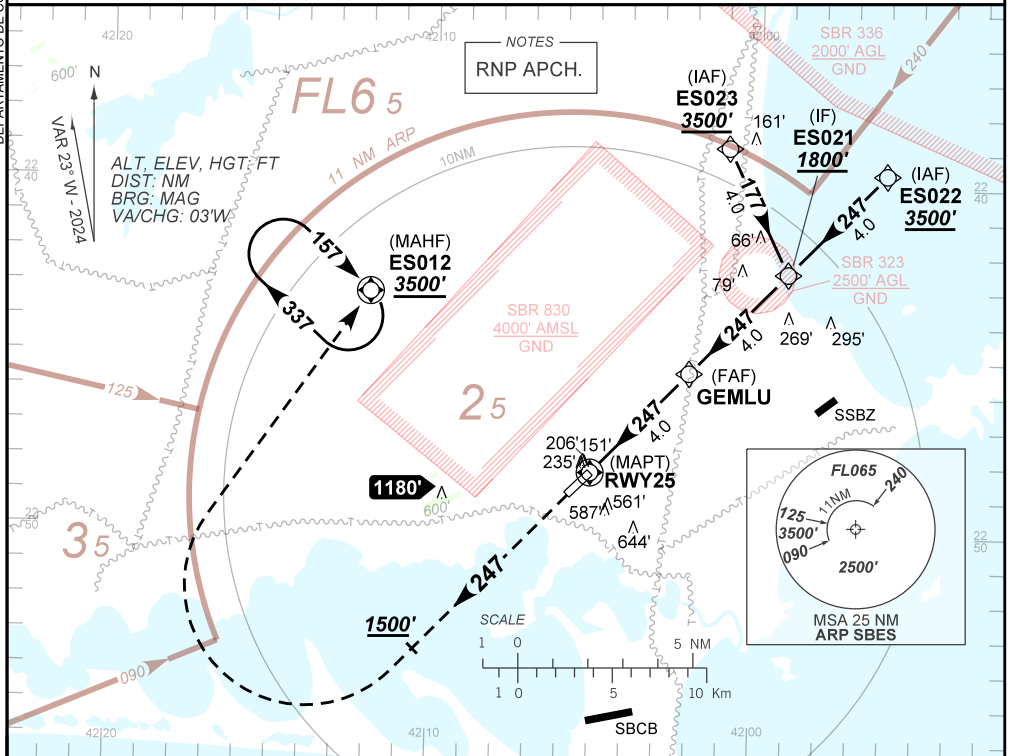
**AD ELEV: 61'**

ATIS <b>NIL</b>	APP ALDEIA <b>119.45 120.30</b>	TWR ALDEIA <b>118.30 122.80 (MIL)</b>	GNDC ALDEIA <b>121.90</b>
TEMP LNAV/VNAV <b>MIN 0°C / MAX 48°C</b>	FINAL CRS <b>247°</b>	FAF: <b>1390'</b>	LNAV MDA / (OCH): <b>590' / (530')</b>

APCH Perdida: Subir para **3500'**. Manter rumo **247** até **1500'**. Após, curvar à DIREITA direto ES012 para espera.

Missed APCH: Climb to **3500'**. Maintain course **247** until **1500'**. After, turn RIGHT direct ES012 for holding.

DEPARTAMENTO DE CONTROLE DO ESPAÇO AÉREO



RWY25	1.5	2.0	3.0	GEMLU		Ground Speed (KT)	090	110	130	150	170	190
ALT	590	748	1066	1390		FPM	500	600	700	800	900	NA
(HGT)	530	687	1005	1329		FAF-MAPT	NA					

STRAIGHT-IN	CAT	A	B	C	D	E
LNAV/VNAV	DA / (OCH)	532' / (471')				NA
LNAV	ALS / NO ALS / RVR ALS (m)	NIL / 2200 / NIL				
LNAV	MDA / (OCH)	590' / (530')				
CIRCLING	MDA / (OCH)	NIL / 2200 / NIL				NA
	VIS (m)	NIL / 2400 / NIL				

CHANGES: EAC, LAYOUT, MINM OPR, OBST, PROC, VAR