

**INSTRUMENT APPROACH
CHART (IAC)**

NATAL / Augusto Severo, MIL (SBNT)

AD ELEV: 171'

VOR Y RWY 16L

D-ATIS 132.65	APP NATAL 119.30 119.65 120.65 129.80		TWR NATAL 118.70 122.80	GNDC NATAL 121.90
-------------------------	---	--	-----------------------------------	-----------------------------

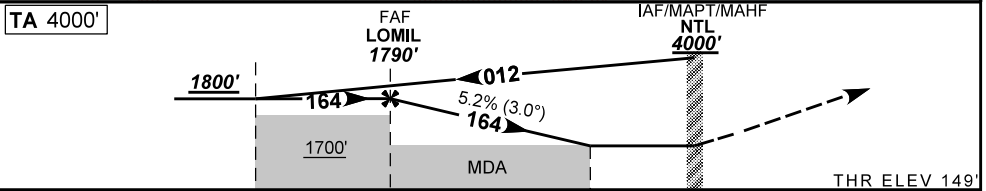
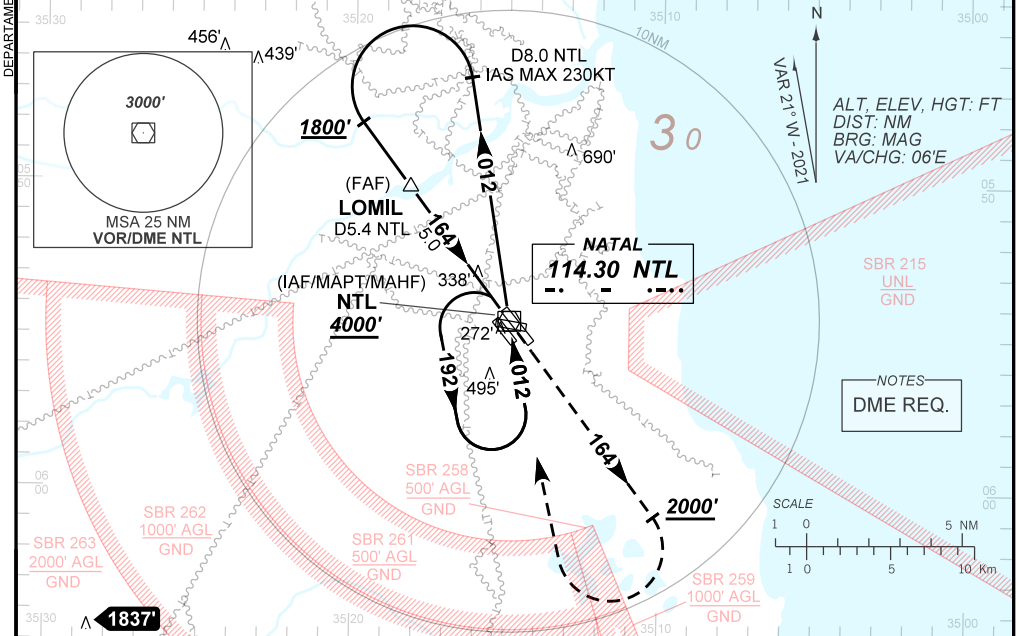
VOR NTL 114.30 MHz	FINAL CRS 164°	FAF: 1790'	N/A	VOR MDA / (OCH): 590' / (450')
------------------------------	--------------------------	----------------------	-----	--

APCH Perdida: Subir para **4000'**. Manter a RDL **164** do VOR NTL até **2000'**. Após, curvar à DIREITA direto VOR NTL para espera.

Missed APCH: Climb to **4000'**. Maintain **164** RDL NTL VOR until **2000'**. After, turn RIGHT direct to NTL VOR for holding.

RMK: Proibido circular setores N (norte), NE (nordeste) e E (leste) do AD.
Prohibited to circle N (north), NE (northeast) and E (east) sectors from AD.

DEPARTAMENTO DE CONTROLE DO ESPAÇO AÉREO



TO THR 16L (NM)	7.6	5.0	1.2	0.0
TO NTL (DME)	8.0	5.4	1.6	0.4

	LOMIL	4.0	3.0	2.0	1.2	RWY16L	Ground Speed (KT)	090	110	130	150	170	190
	1790	1473	1154	836	590	ALT	FPM	500	600	700	800	900	1000
	1641	1324	1005	687	450	(HGT)	FAF-MAPT	NA					

STRAIGHT-IN	CAT	A	B	C	D	E
	MDA / (OCH)	590' / (450')				
VOR	ALS/SNO ALS/ RVR ALS (m)	NIL / 1600 / NIL			NIL / 2100 / NIL	
CIRCLING	MDA / (OCH)	650' / (490')	800' / (640')	910' / (750')	980' / (820')	1190' / (1030')
	VIS (m)	1600	1600	3600	4400	4800

CHANGES: EAC, FREQ, IDENT, LAYOUT, MIN, OPR, PROC, VAR.