

**INSTRUMENT APPROACH  
CHART (IAC)**

**NATAL / Campo Augusto Severo, MIL (SBNT)**

**AD ELEV: 169'**

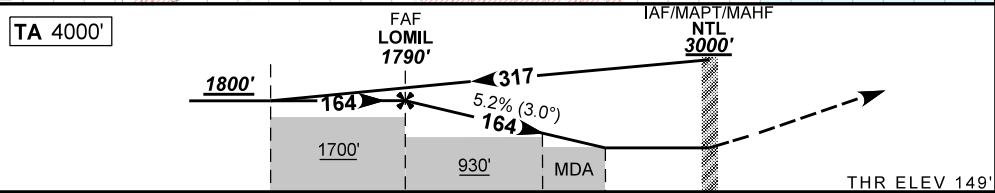
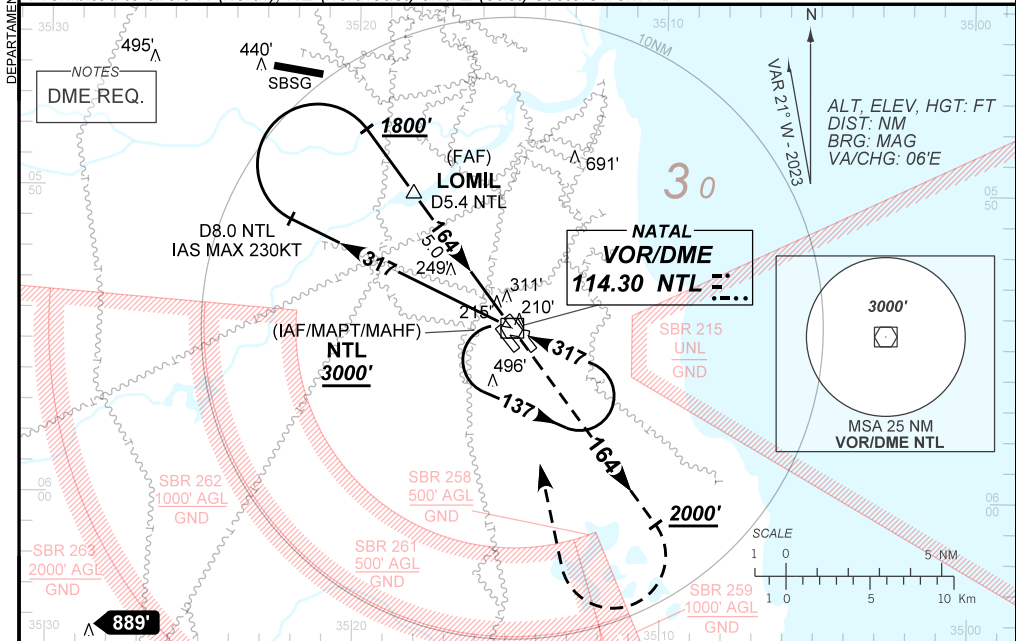
**VOR Y RWY 16L**

D-ATIS <b>132.65</b>	APP NATAL <b>119.30 119.65 120.65 129.80</b>			TWR NATAL <b>118.70 122.80</b>	GNDC NATAL <b>121.90</b>
VOR NTL <b>114.30 MHz</b>	FINAL CRS <b>164°</b>	FAF: <b>1790'</b>	N/A	VOR MDA / (OCH): <b>590' / (450')</b>	

APCH Perdida: Subir para **3000'**. Manter a RDL **164°** do VOR NTL até **2000'**. Após, curvar à DIREITA direto VOR NTL para espera.

Missed APCH: Climb to **3000'**. Maintain **164°** RDL NTL VOR until **2000'**. After, turn RIGHT direct to NTL VOR for holding.

RMK: Proibido circular setores N (norte), NE (nordeste) e E (leste) do AD.  
Prohibited to circle N (north), NE (northeast) and E (east) sectors from AD.



TO THR 16L (NM)	7.6	5.0	2.3	1.3	0.0
TO NTL (DME)	8.0	5.4	2.7	1.7	0.4

	LOMIL	4.0	3.0	2.3	1.3	RW16L	Ground Speed (KT)	090	110	130	150	170	190
	1790	1473	1154	931	590	ALT	FPM	500	600	700	800	900	1000
	1641	1324	1005	782	450	(HGT)	FAF-MAPT	NA					

STRAIGHT-IN	CAT	A	B	C	D	E
	MDA / (OCH)	590' / (450')				
VOR	ALS/NO ALS/RVR ALS (m)	NIL / 1600 / NIL			NIL / 2100 / NIL	
CIRCLING	MDA / (OCH)	800' / (630')	910' / (740')	980' / (810')	1190' / (1020')	
	VIS (m)	1600	3200	4000	4800	

CHANGES: AD ELEV, IDENT, LAYOUT, PROC, VAR.