

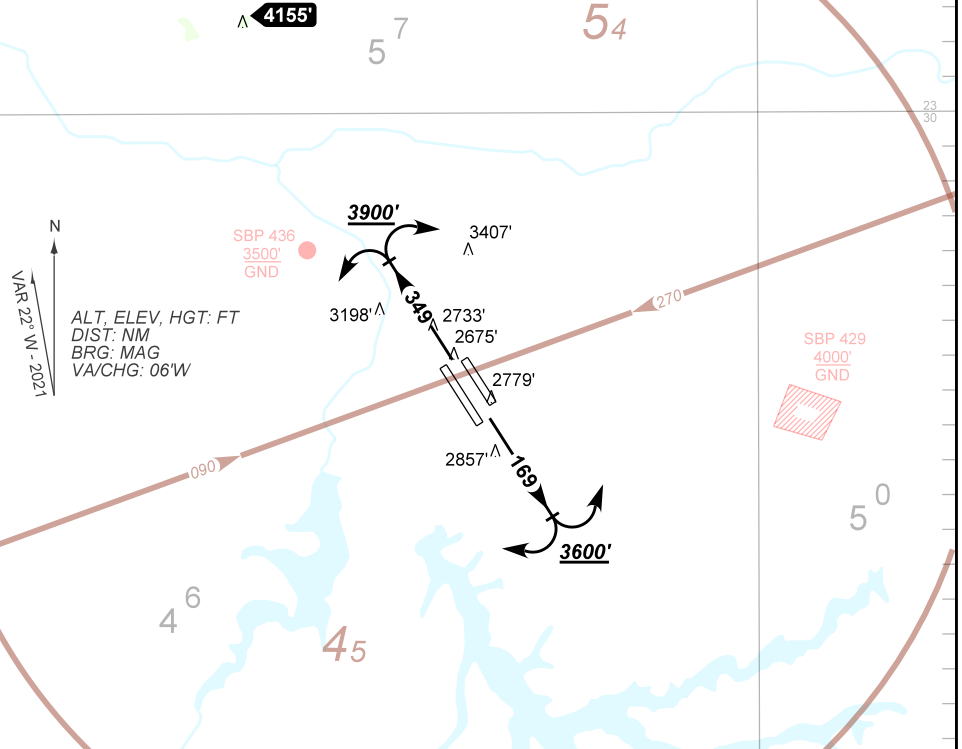
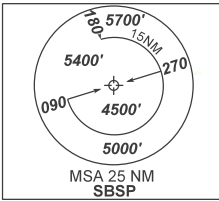
STANDARD DEPARTURE CHART
INSTRUMENT (SID)

SÃO PAULO / Congonhas (SBSP)
RWY 17L/17R 35L/35R
OMNI

AD ELEV: 2631'

TA 8000'	TWR SÃO PAULO 118.05 127.15	APP SÃO PAULO 120.45 122.75 129.05 129.75 129.00	APP ACADEMIA 119.55 119.75 120.10 APP RIO 121.35 125.60 124.70	ACC BRASÍLIA 127.25 126.80 128.50 ACC CURITIBA 132.80 126.50

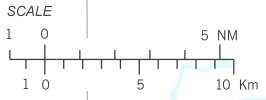
DEPARTAMENTO DE CONTROLE DO ESPAÇO AÉREO



N
VAR 22° W - 2021

ALT, ELEV, HGT: FT
DIST: NM
BRG: MAG
VA/CHG: 06°W

- 1 - Gradiente MNM de subida:
MNM climb Gradient:
RWY 17L / 17R: 3.5% até/until 3600'. Após /After, 3.3%.
RWY 35L / 35R: 5.5% até/until 3900'. Após /After, 3.3%.
- 2 - DEP RWY 17L/17R/35L/35R:
Subir para 6000' na proa autorizada e aguardar instrução ATC.
Climb to 6000' on cleared heading and expect further ATC instructions.
- 3 - Falha de Comunicações:
Após 25NM distante de SBSP, direto para a rota do plano de voo.
Communications Failure:
After 25NM away from SBSP, direct to flight plan enroute.
- 4 - INFO complementares no verso.
See reverse side for additional INFO.



CHANGES: FREQ.

— R M K —

5 - Obstáculos próximos não considerados para cálculo do (PDG):

Close-in obstacles not considered for procedure gradient (PDG):

Tipo / Type	Htg(m) / Elev(ft)	AZM / DIST(m)
RWY 17L		
Terreno / Terrain	46 / 2779'	146 / 1085
RWY 17R		
Terreno / Terrain	47 / 2779'	144 / 808
RWY 35R		
Prédio / Building	27 / 2675'	015 / 402

DEPARTAMENTO DE CONTROLE DO ESPAÇO AÉREO

CHANGES: FREQ.