

**INSTRUMENT APPROACH
CHART (IAC)**

GOVERNADOR VALADARES / Coronel Altino Machado (SBGV)

RNP RWY 07

(CAT A, B)

AD ELEV: 563'

ATIS NIL	ERAA 130.425	APP NIL	AFIS VALADARES 132.05	GNDC NIL
TEMP LNAV/VNAV MIN 0°C / MAX 40°C	FINAL CRS 068°	FAF: 2350'	LNAV/VNAV DA / (OCH): 1232' / (670')	LNAV MDA / (OCH): 1330' / (770')

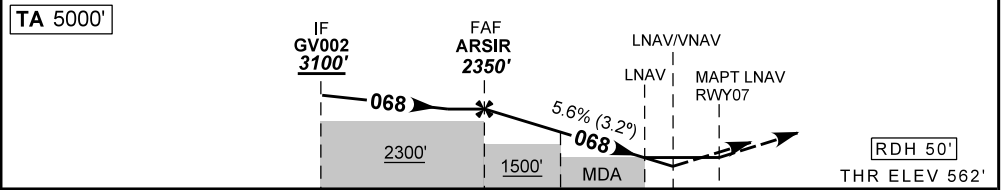
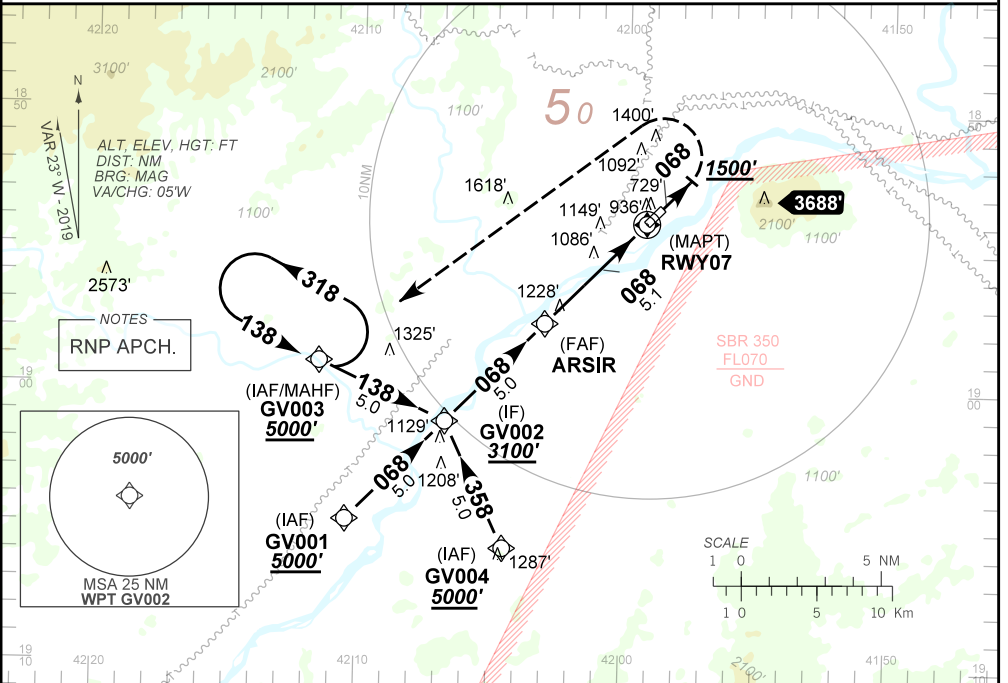
APCH Perdida: Subir para **5000'**. Após **1500'**, curvar à ESQUERDA direto GV003 para espera.

Missed APCH: Climb to **5000'**. After **1500'**, turn LEFT direct to GV003 for holding.

RMK: Aproximação para circular não autorizada pelo setor LESTE, devido a relevo.

Circling Approach is not authorized by EAST sector of the aerodrome due to relief.

DEPARTAMENTO DE CONTROLE DO ESPAÇO AEREO



TO THR 07 (NM) 10.1 5.1 3.1 2.1 1.8 0.0

	ARSIR	4.0	3.1	2.1	RWY07	Ground Speed (KT)	090	110	130	150	170	190
	2350	1971	1676	1330	ALT	FPM	500	600	700	NA	NA	NA
	1788	1409	1114	770	(HGT)	FAF-MAPT	NA					

STRAIGHT-IN	CAT		A		B		C		D		E	
	DA / (OCH)		1232' / (670')									
LNAV/VNAV	ALS/NO ALS/ RVR ALS (m)		NIL / 1600 / NIL									
	MDA / (OCH)		1330' / (770')								NA	
LNAV	ALS/NO ALS/ RVR ALS (m)		NIL / 1600 / NIL		NIL / 2000 / NIL							
	MDA / (OCH)		1490' / (930')		1700' / (1140')							
CIRCLING	MDA / (OCH)		1490' / (930')		1700' / (1140')							
	VIS (m)		NIL / 2000 / NIL		NIL / 2400 / NIL							

CHANGES: LAYOUT: WPT.