

**INSTRUMENT APPROACH
CHART (IAC)**

MACAÉ / Macaé (SBME)

RNP Y RWY 24

(CAT A, B, C)

AD ELEV: 8'

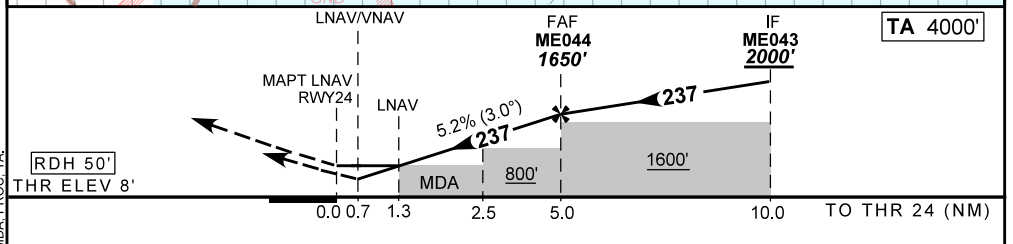
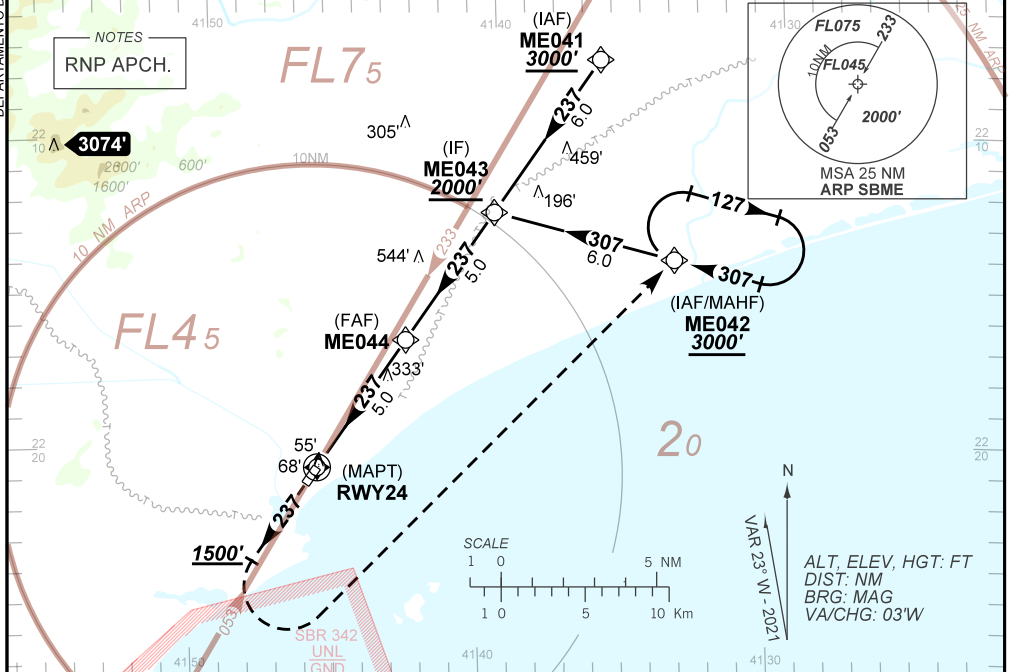
ATIS 127.775	APP MACAÉ 119.20 120.00 126.90 128.95 129.30 129.55 130.30 130.85 131.98	TWR MACAÉ 118.45	AFIS MACAÉ 119.20
------------------------	--	----------------------------	-----------------------------

TEMP LNAV/VNAV MIN 00°C / MAX 45°C	FINAL CRS 237°	FAF: 1650'	LNAV/VNAV DA / (OCH): 294' / (286')	LNAV MDA / (OCH): 460' / (460')
--	--------------------------	----------------------	---	---

APCH Perdida: Subir para **3000'**. Manter proa **237°** até passar **1500'**. Após, curvar à ESQUERDA direto ME042 para espera.

Missed APCH: Climb to **3000'**. Maintain heading **237°** until passing **1500'**. After, turn LEFT direct to ME042 for holding.

RMK: NIL.



RWY24	0.7	1.3	2.5	3.0	4.0	ME044	Ground Speed (KT)	090	110	130	150	170	190
ALT	294	460	854	1013	1332	1650	FPM	500	600	700	800	NA	NA
(HGT)	286	460	846	1005	1324	1642	FAF-MAPT	NA					

STRAIGHT-IN	CAT	A	B	C	D	E
	DA / (OCH)	294' / (286')			NA	
LNAV/VNAV	ALS/NO ALS/ RVR ALS (m)	NIL / 1400 / NIL			NA	
	MDA / (OCH)	460' / (460')			NA	
LNAV	ALS/NO ALS/ RVR ALS (m)	NIL / 1600 / NIL		NIL / 2100 / NIL		
	MDA / (OCH)	NA				
CIRCLING	MDA / (OCH)	NA				
	VIS (m)	NA				

DEPARTAMENTO DE CONTROLE DO ESPAÇO AÉREO

CHANGES: DEC. FREQ. IDENT. LAYOUT. MDA. PROC. TA.