

**INSTRUMENT APPROACH
CHART (IAC)**

SANTA MARIA / Santa Maria (SBSM)

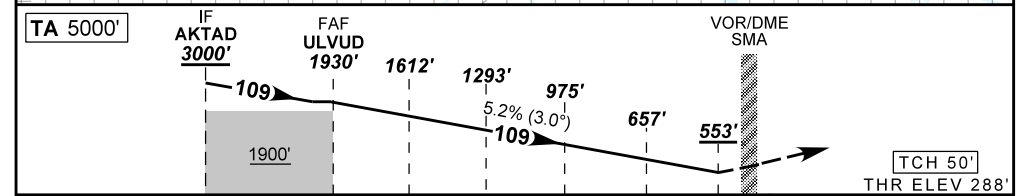
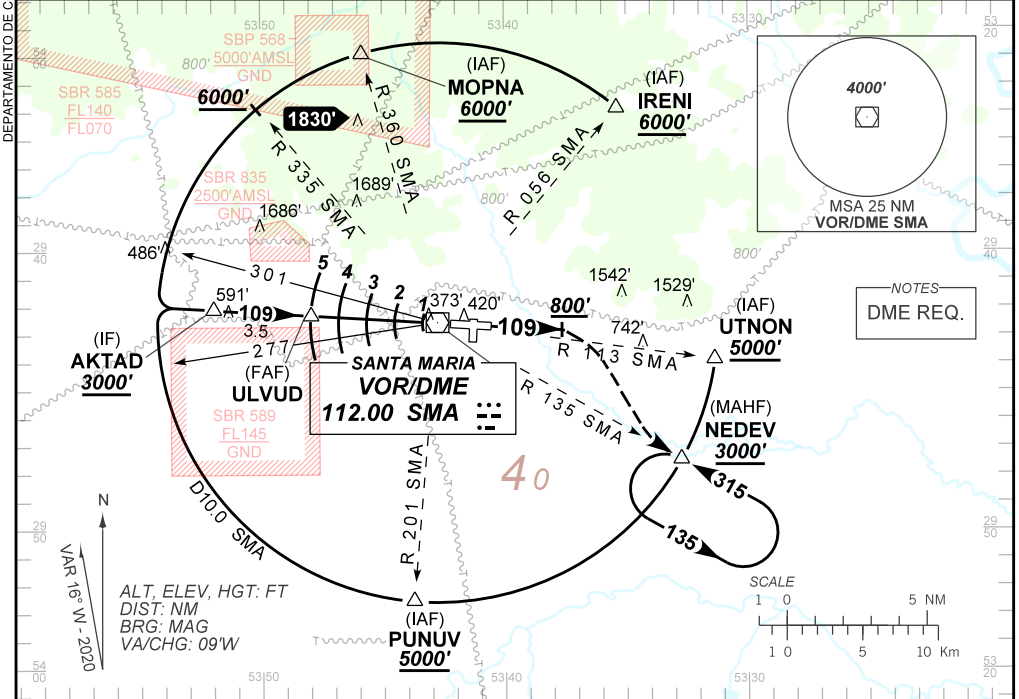
**USO EXCLUSIVO ACFT MILITARES
MILITARY ACFT ONLY**

PAR Z RWY 11

AD ELEV: 289'

ATIS 127.75	APP SANTA MARIA 119.35 121.35	PAR SANTA MARIA 129.05 129.40 129.80	TWR SANTA MARIA 118.30 118.85	AFIS SANTA MARIA 119.35 121.35 118.30	GNDC NIL
N/A	FINAL CRS 109°	FAF: 1930'	PAR DA / (OCH): 553' / (265')	N/A	

APCH Perdida: Subir para **3000'**. Manter rumo **109°** até **800'**. Então, curvar à DIREITA para interceptar RDL **135** do VOR SMA até NEDEV para espera. IAS MAX 230 KT até NEDEV.
Missed APCH: Climb to **3000'**. Maintain course **109°** until **800'**. Then, turn **RIGHT** to intercept **135** RDL SMA VOR until NEDEV for holding. IAS MAX 230KT until NEDEV.



TO THR 11 (NM)	8.5	5.0	4.0	3.0	2.0	1.0	0.7	0.5	0.0
TO SMA (DME)	8.0	4.5	3.5	2.5	1.5	0.5	0.2	0.0	

FAF	4.0	3.0	2.0	1.0	RWY11		Ground Speed (KT)	090	110	130	150	170	190
1930	1612	1293	975	657	ALT		FPM	500	600	700	800	900	1000
1642	1324	1005	687	369	(HGT)		FAF-MAPT	NA					

STRAIGHT-IN	CAT	A	B	C	D	E
	DA / (OCH)	553' / (265')				
PAR	ALS/NO ALS/ RVR ALS (m)	800 / 1300 / NIL				
	MDA / (OCH)	NA				
CIRCLING	VIS (m)	NA				