

**INSTRUMENT APPROACH CHART (IAC)**

**RIO DE JANEIRO / Santa Cruz, MIL (SBSC)**

**USO EXCLUSIVO ACFT MILITARES  
MILITARY ACFT ONLY**

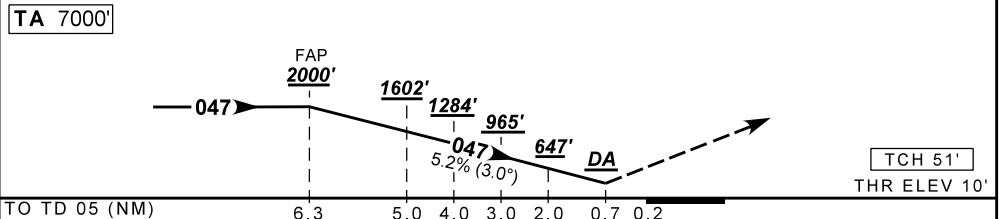
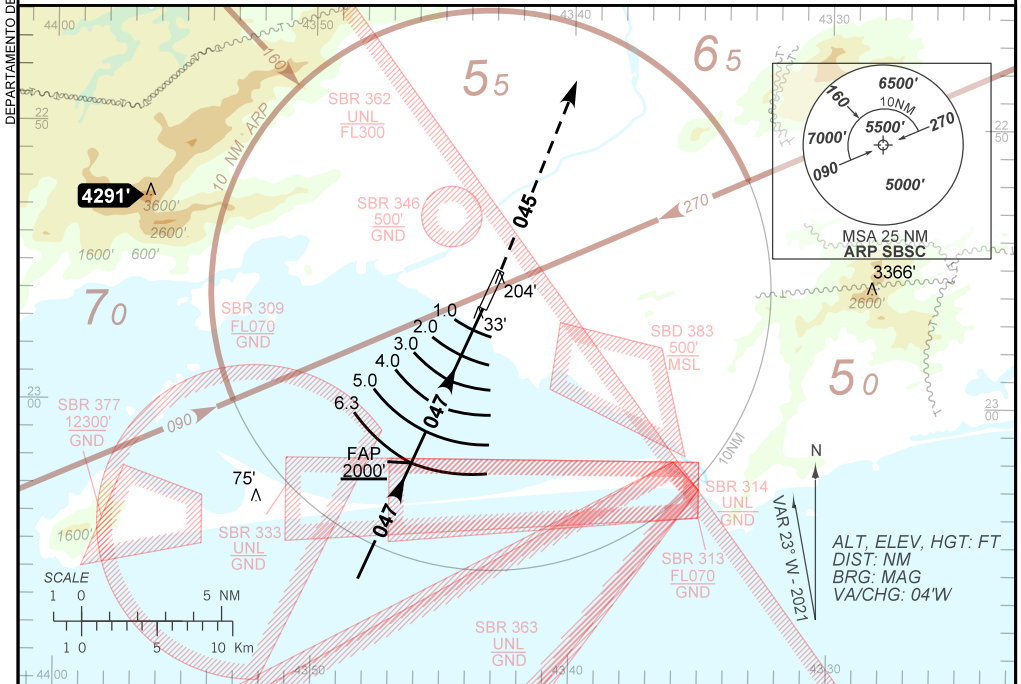
**PAR S RWY 05**

**AD ELEV: 10'**

ATIS NIL	APP RIO 133.70 132.50 134.40 121.25 119.00 120.55 124.95 134.95 129.80 125.95	PAR SANTA CRUZ 132.20	TWR SANTA CRUZ 118.80 122.90	GNDC SANTA CRUZ 121.80
N/A	FINAL CRS 047°	FAP: 2000'	PAR DA / (OCH): 210' / (200')	N/A

APCH Perdida: Subir para **4000'** na proa **045** e chamar o Controle Rio.  
Missed APCH: Climb to **4000'** on heading **045** and contact Rio Approach Control.

RMK: NIL.



FAP	5.0	4.0	3.0	2.0	0.7	TD 05	Ground Speed (KT)	90	110	130	150	170	190
2000	1602	1284	965	647	210	ALT	FPM	500	600	700	800	900	1000
1990	1592	1274	955	637	200	(HGT)	FAF-MAPT	NA					

STRAIGHT-IN	CAT	A	B	C	D	E
PAR	DA / (OCH)	210' / (200')				
	ALS/NO ALS/ RVR ALS (m)	NIL / 1200' / NIL				
CIRCLING	MDA / (OCH)	NA				
	VIS (m)	NA				

DEPARTAMENTO DE CONTROLE DO ESPAÇO AEREO  
CHANGES: DA, FAP, FREQ, MNM, OPR, PROFILE, PROC.