

**INSTRUMENT APPROACH
CHART (IAC)**

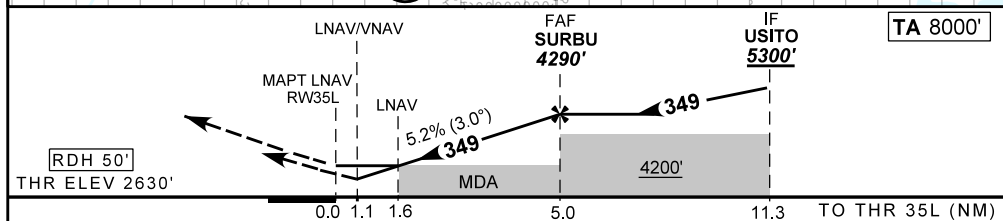
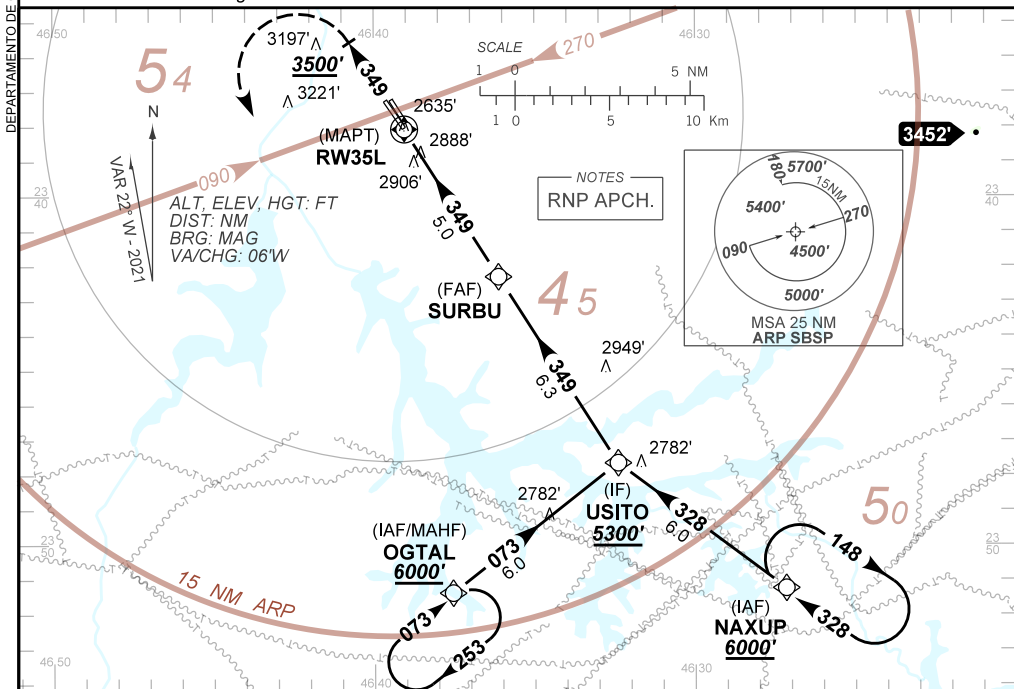
**SÃO PAULO / Congonhas, INTL (SBSP)
RNP Z RWY 35L
(CAT A,B,C)**

AD ELEV: 2631'

D-ATIS 127.65	APP SÃO PAULO 133.85 119.05 134.90 119.80 129.00 122.75	TWR SÃO PAULO 118.05 127.15	GNDC SÃO PAULO 121.90
-------------------------	---	---------------------------------------	---------------------------------

TEMP LNAV/VNAV MIN 0°C / MAX 50°C	FINAL CRS 349°	FAF 4290'	LNAV/VNAV DA / (OCH): 3049' / (418')	LNAV MDA / (OCH): 3180' / (550')
---	--------------------------	---------------------	--	--

APCH Perdida: Subir para **6000'**. Manter rumo **349** com gradiente MNM de 4% até **3500'**. Após, curvar à ESQUERDA direto OGTAL para espera.
Missed APCH: Climb to **6000'**. Maintain course **349** MNM climb gradient 4%. until **3500'**. After, turn LEFT direct OGTAL for holding.



RW35L	1.6	2.0	3.0	4.0	SURBU		KT	90	110	130	150	170	190
ALT	3180	3317	3636	3954	4290		FPM	500	600	700	800	900	NA
(HGT)	550	687	1006	1324	1660		FAF-MAPT	NA					

STRAIGHT-IN	CAT	A	B	C	D	E
LNAV/VNAV	DA / (OCH)	3049' / (418')			NA	NA
	ALS/NO ALS/ RVR ALS (m)	NIL / 1900 / NIL				
LNAV	MDA / (OCH)	3180' / (550')			NIL / 2500 / NIL	NA
	ALS/NO ALS/ RVR ALS (m)	NIL / 1900 / NIL				
CIRCLING		NA				

CHANGES: MNM OFFR.

DEPARTAMENTO DE CONTROLE DO ESPAÇO AÉREO