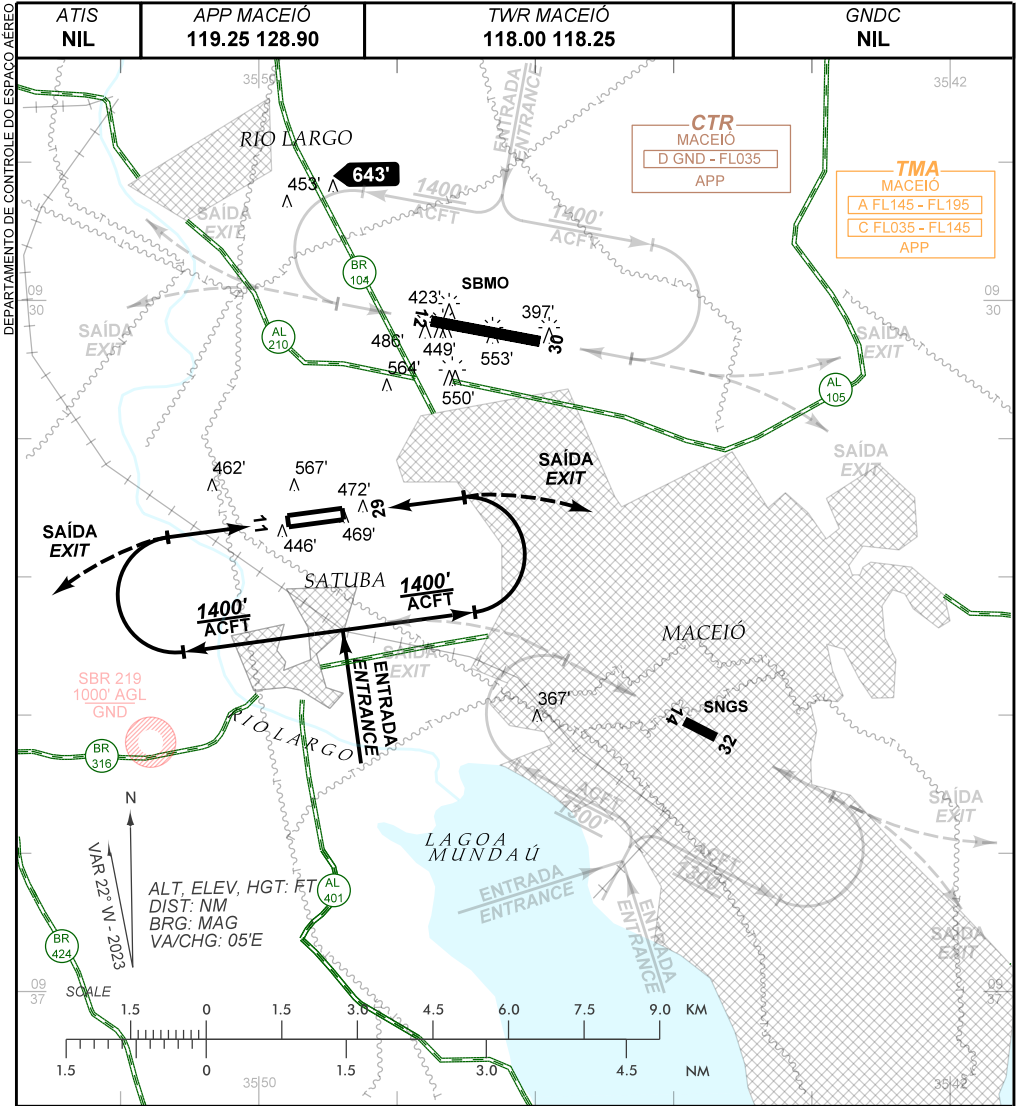


VISUAL APPROACH CHART  
(VAC)

RIO LARGO / Manduca Leão (SNML)

AD ELEV: 404'

RWY 11 / 29



**RMK:**

- 1 - AUTORIZADO SOMENTE / ONLY AUTHORIZED ACFT CAT A, B.
- 2 - CONTATO COMPULSÓRIO COM APP-MO ANTES DE INICIAR TKOF.  
COMPULSORY CONTACT WITH APP-MO BEFORE TKOF.
- 3 - PROIBIDO OPS ACFT SEM RÁDIO.  
PROHIBITED OPS ACFT WITHOUT RADIO.
- 4 - VELOCIDADE MAX NO CIRCUITO DE TRÁFEGO DE 120KT.  
MAX SPEED AT TRAFFIC CIRCUIT 120 KT.
- 5 - PARA POUSO EM SBMO E SNGS, VER VAC DESTES AERÓDROMOS.  
FOR LANDING IN SBMO AND SNGS, SEE VAC OF THESE AERODROMES.

CHANGES: LAYOUT