

STANDARD DEPARTURE CHART
INSTRUMENT (SID)

TERESINA / Senador Petrônio Portella (SBTE)

RWY 02

RNAV SIKIL 1C

AD ELEV: 220'

TA 4000'	ATIS 127.80	TWR TERESINA 118.80	APP TERESINA 119.60	ACC AMAZÔNICO 126.15 128.30 133.70	ACC RECIFE 125.15 135.25
----------	-------------	---------------------	---------------------	------------------------------------	--------------------------

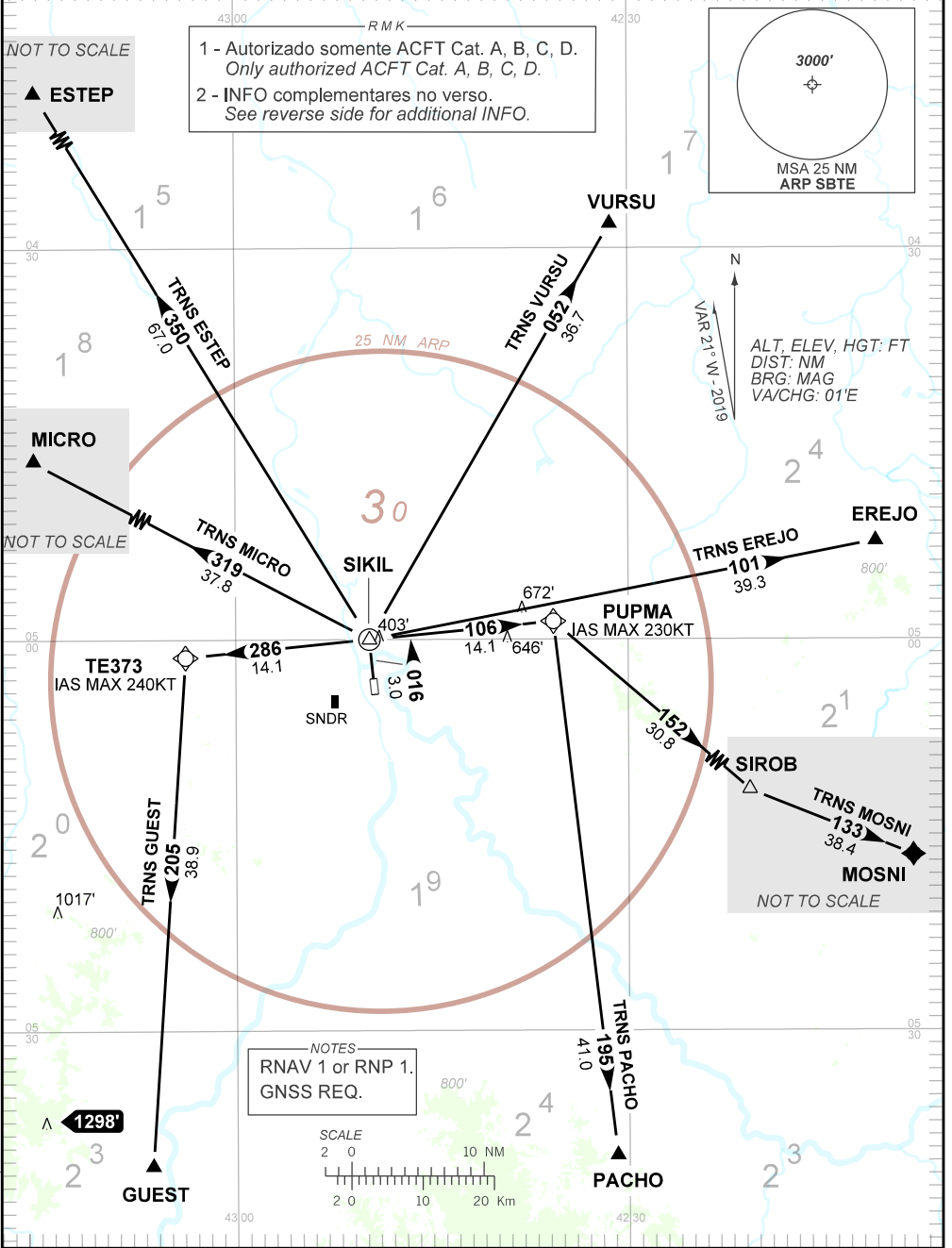
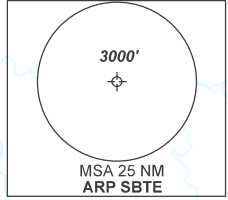
DEPARTAMENTO DE CONTROLE DO ESPAÇO AEREO

NOT TO SCALE

NOT TO SCALE

CHANGES: F LAYOUT.

1 - Autorizado somente ACFT Cat. A, B, C, D.
Only authorized ACFT Cat. A, B, C, D.
2 - INFO complementares no verso.
See reverse side for additional INFO.



— RMK —

3 - Obstáculos próximos não considerados para cálculo do gradiente do procedimento (PDG):

Close-in obstacles not considered for procedure gradient (PDG):

- árvore/ *tree*: a partir de/from THR 20, AZM 050, DIST 313M, ELEV 262'.

- poste/ *pole*: a partir de/from THR 20, AZM 016, DIST 232M, ELEV 213'.

- poste/ *pole*: a partir de/from THR 20, AZM 356, DIST 213M, ELEV 213'.

- chaminé/ *chimney*: a partir de/from THR 20, AZM 034, DIST 888M, ELEV 285'.