

**INSTRUMENT APPROACH
CHART (IAC)**

**SÃO PAULO / Congonhas, INTL (SBSP)
RNP Z RWY 35L
(CAT A,B,C)**

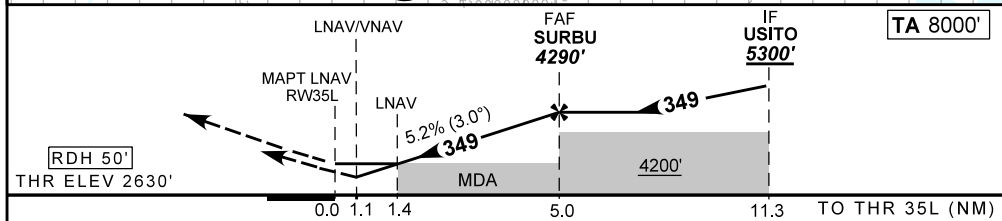
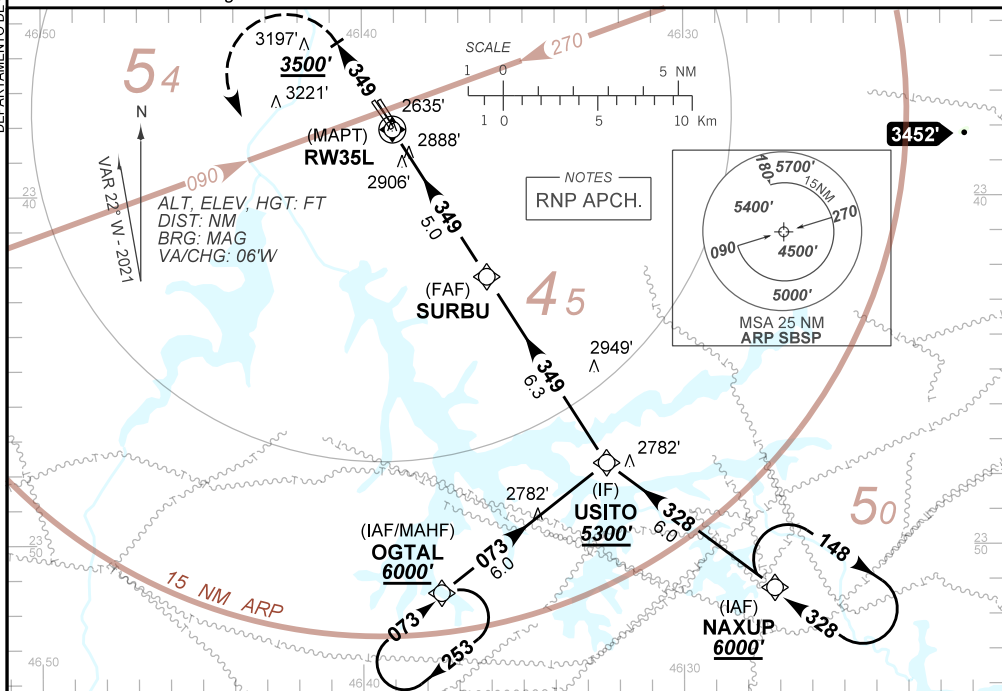
AD ELEV: 2631'

D-ATIS 127.65	APP SÃO PAULO 133.85 119.05 134.90 119.80 129.00 122.75	TWR SÃO PAULO 118.05 127.15	GNDC SÃO PAULO 121.90
-------------------------	---	---------------------------------------	---------------------------------

TEMP LNAV/VNAV MIN 0°C / MAX 50°C	FINAL CRS 349°	FAF 4290'	LNAV/VNAV DA / (OCH): 3049' / (418')	LNAV MDA / (OCH): 3160' / (530')
---	--------------------------	---------------------	--	--

APCH Perdida: Subir para **6000'**. Manter rumo **349°** com gradiente MNM de 4% até **3500'**. Após, curvar à ESQUERDA direto OGTAL para espera.
Missed APCH: Climb to **6000'**. Maintain course **349°** MNM climb gradient 4%. until **3500'**. After, turn LEFT direct OGTAL for holding.

DEPARTAMENTO DE CONTROLE DO ESPAÇO AÉREO



RW35L	1.1	2.0	3.0	4.0	SURBU		KT	90	110	130	150	170	190
ALT	3049	3317	3636	3954	4290		FPM	500	600	700	800	900	NA
(HGT)	418'	687'	1006'	1324'	1660'		FAF-MAPT	NA					

STRAIGHT-IN	CAT	A	B	C	D	E
LNAV/VNAV	DA / (OCH)	3049' / (418')			NA	
	ALS/NO ALS/ RVR ALS (m)	NIL / 1900 / NIL			NA	
LNAV	MDA / (OCH)	3160' / (530')			NA	
	ALS/NO ALS/ RVR ALS (m)	NIL / 1900 / NIL			NIL / 2400 / NIL	
CIRCLING		NA				

CHANGES: NEW CHART...