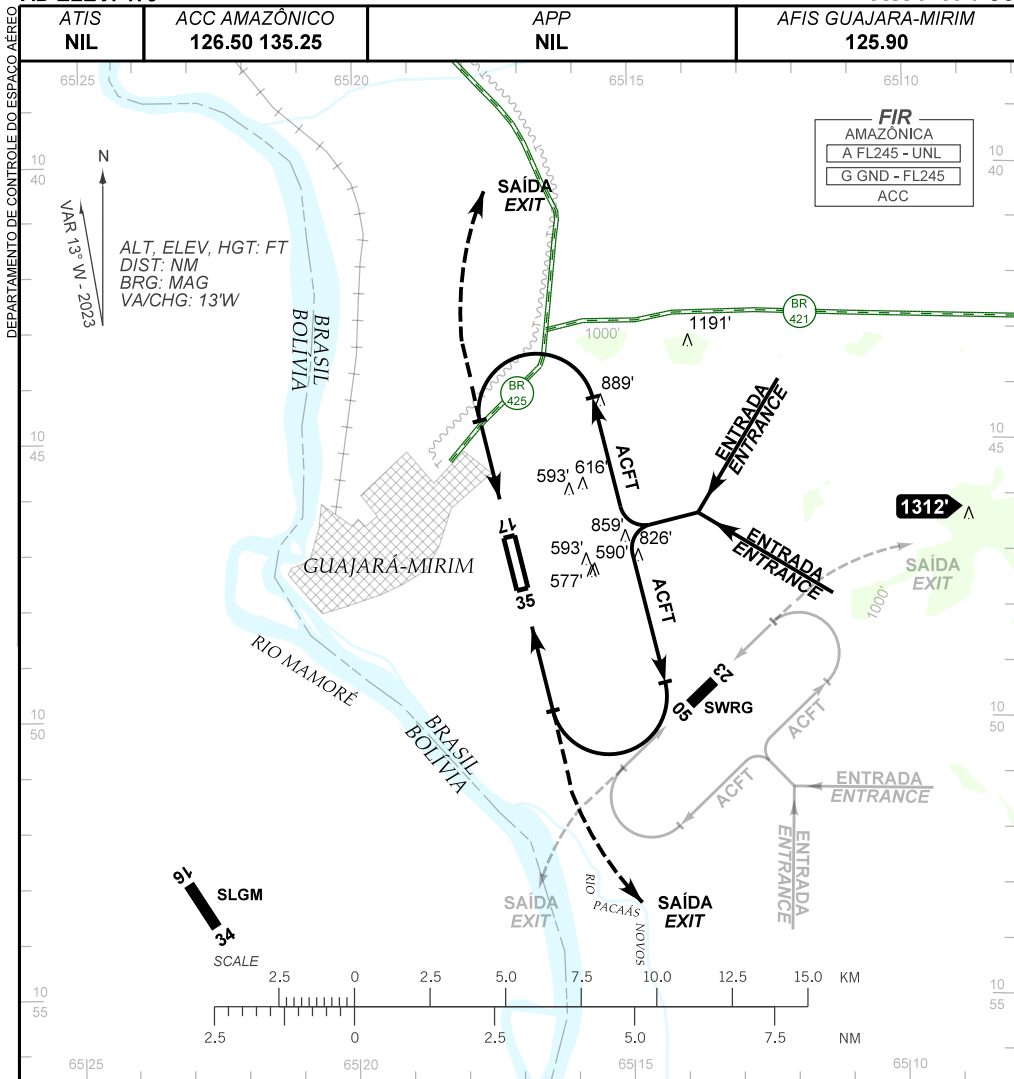


**VISUAL APPROACH CHART  
(VAC)**

**GUAJARA-MIRIM / Guajará-Mirim (SBGM)**

**AD ELEV: 479'**

**RWY 17 / 35**



**RMK:**

- 1- AUTORIZADO SOMENTE / ONLY AUTHORIZED ACFT CAT A, B, C, D.
- 2- ALTITUDES MÍNIMAS NO CIRCUITO DE TRÁFEGO / MINIMUM ALTITUDES IN TRAFFIC CIRCUIT:
  - 2.1- AERONAVES / AIRPLANES:
    - CAT A, B: 1500'
    - CAT C: 1600'
    - CAT D: 2000'
- 3- INFORMAÇÕES COMPLEMENTARES NO VERSO.  
SEE REVERSE SIDE FOR ADDITIONAL INFORMATION.

CHANGES: LAYOUT, MINM CKT, OBST. VAR.

— RMK —

- 4- PRB OPS DE LDG, EXC OPS MIL, POR NECESSIDADE DE EMERG MEDICA OU DE TRANSPORTE DE VALORES, MEDIANTE PREVIA COOR COM O OPR DO AD.  
*PRB OPS OF LDG, EXC MIL OPS, DUE TO MEDICAL EMERG OR TRANSPORT OF VALUES, UPON PRIOR COOR WITH THE AD OPR.*
- 5- PARA POUSO EM SLGM, VER VAC DESTE AERÓDROMO.  
*FOR LANDING IN SLGM, SEE VAC OF THIS AERODROME.*