

STANDARD DEPARTURE CHART
INSTRUMENT (SID)

CURITIBA / Afonso Pena, INTL (SBCT)

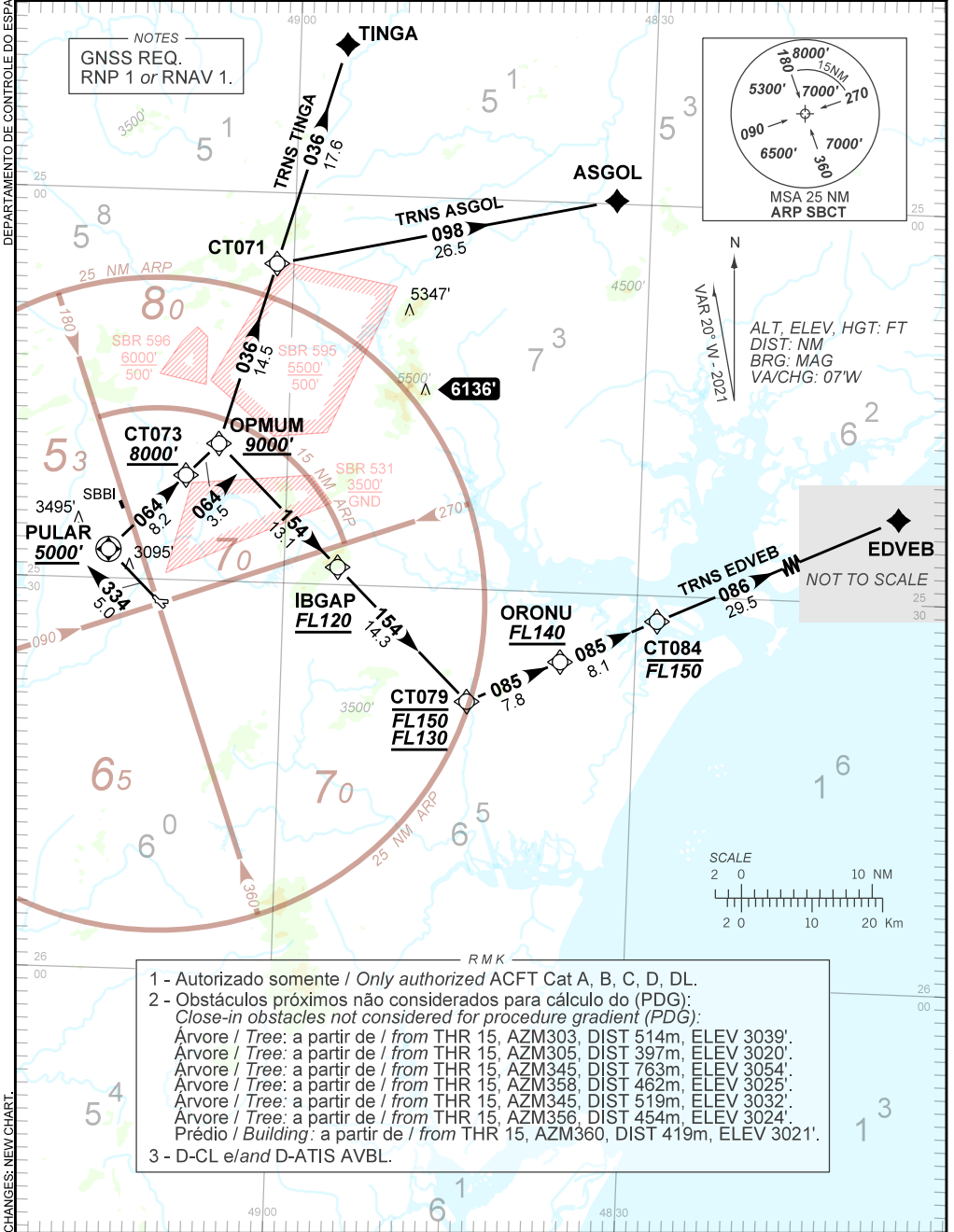
RWY 33

RNAV OPNUM 1B

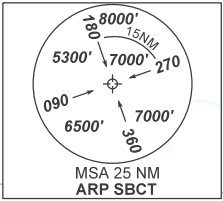
AD ELEV: 2989'

TA 9000'	TWR CURITIBA 118.15	APP CURITIBA 119.70 119.35 120.65 129.55 120.95 133.15	ACC CURITIBA 124.40 125.40 126.50 132.80 125.80 127.20 126.95
----------	------------------------	--	---

DEPARTAMENTO DE CONTROLE DO ESPAÇO AÉREO



NOTES
GNSS REQ.
RNP 1 or RNAV 1.



ALT, ELEV, HGT: FT
DIST: NM
BRG: MAG
VA/CHG: 07'W

EDVEB
NOT TO SCALE

- 1 - Autorizado somente / Only authorized ACFT Cat A, B, C, D, DL.
 2 - Obstáculos próximos não considerados para cálculo do (PDG);
 Close-in obstacles not considered for procedure gradient (PDG):
 Árvore / Tree: a partir de / from THR 15, AZM303, DIST 514m, ELEV 3039'.
 Árvore / Tree: a partir de / from THR 15, AZM305, DIST 397m, ELEV 3020'.
 Árvore / Tree: a partir de / from THR 15, AZM345, DIST 763m, ELEV 3054'.
 Árvore / Tree: a partir de / from THR 15, AZM358, DIST 462m, ELEV 3025'.
 Árvore / Tree: a partir de / from THR 15, AZM345, DIST 519m, ELEV 3032'.
 Árvore / Tree: a partir de / from THR 15, AZM356, DIST 454m, ELEV 3024'.
 Prédio / Building: a partir de / from THR 15, AZM360, DIST 419m, ELEV 3021'.
 3 - D-CL e/and D-ATIS AVBL.

CHANGES: NEW CHART.