

**INSTRUMENT APPROACH  
CHART (IAC)**

**CURITIBA / Afonso Pena, INTL (SBCT)**

**AD ELEV: 2989'**

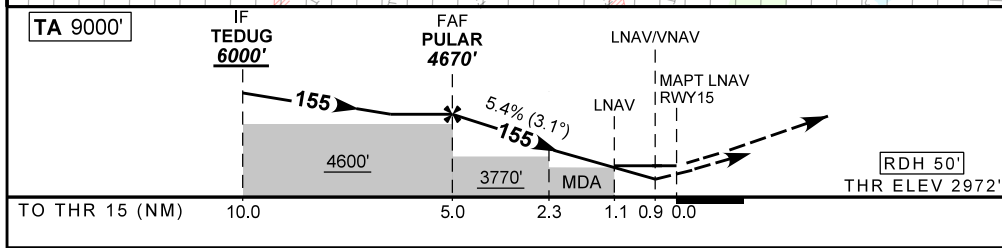
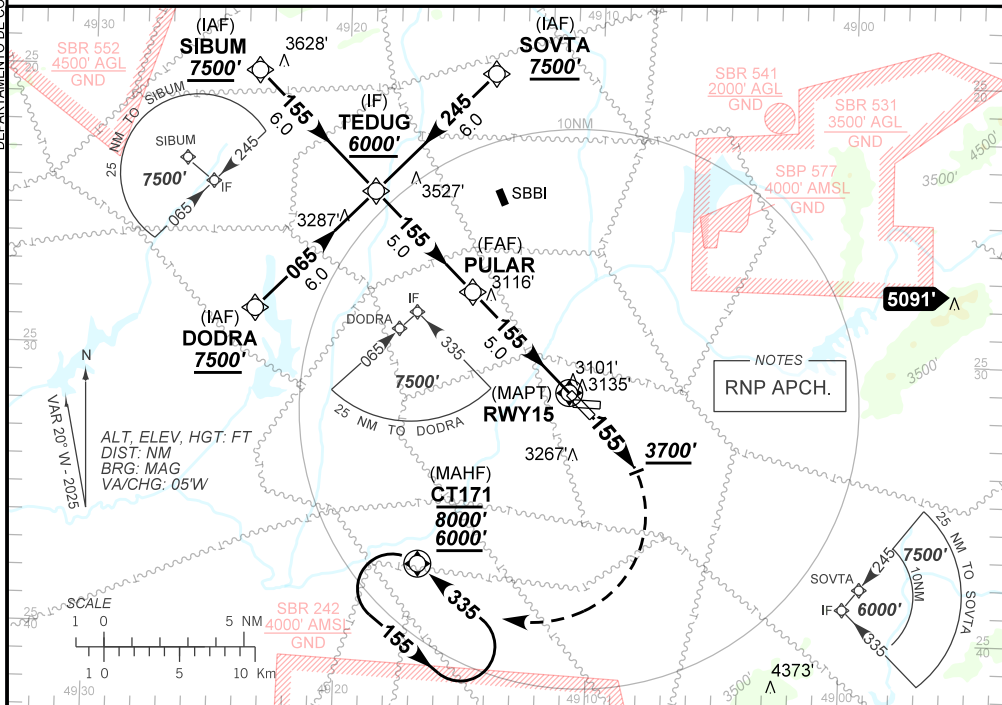
**RNP Z RWY 15**

D-ATIS <b>127.80</b>	APP CURITIBA <b>119.70 120.65 120.95 129.55 133.15</b>	TWR CURITIBA <b>118.15</b>	GNDC CURITIBA <b>121.90</b>
TEMP LNAV/VNAV <b>MIN -10°C / MAX 45°C</b>	FINAL CRS <b>155°</b>	FAF: <b>4670'</b>	LNAV/VNAV DA / (OCH): <b>3303' / (331')</b>
		LNAV MDA / (OCH): <b>3390' / (420')</b>	

APCH Perdida: Subir para **6000'** no rumo **155** até **3700'**. Após, curva à DIREITA direto CT171 para espera.

Missed APCH: Climb to **6000'** on course **155** until **3700'**. After, turn RIGHT direct CT171 for holding.

DEPARTAMENTO DE CONTROLE DO ESPAÇO AEREO



	PULAR	4.0	3.0	2.3	1.1	RWY15	Ground Speed (KT)	090	110	130	150	170	190
	4670	4338	4009	3779	3390	ALT	FPM	500	600	700	800	900	NA
	1698	1366	1037	807	420	(HGT)	FAF-MAPT	NA					

STRAIGHT-IN	CAT	A	B	C	D	E
LNAV/VNAV	DA / (OCH)	3303' / (331')				NA
	ALS/NO ALS/ RVR ALS (m)	800 / 1500 / 750				
LNAV	MDA / (OCH)	3390' / (420')				
	ALS/NO ALS/ RVR ALS (m)	800 / 1600 / 750		1200 / 1900 / 1100		
CIRCLING	MDA / (OCH)	NA				
	VIS (m)					

CHANGES: EAC.