

**INSTRUMENT APPROACH  
CHART (IAC)**

**VITÓRIA / Eurico de Aguiar Salles, INTL (SBVT)**

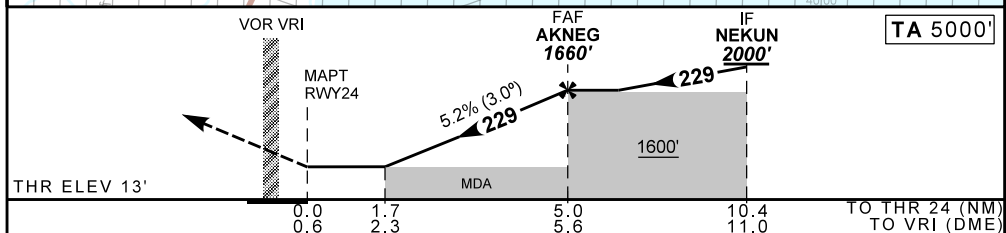
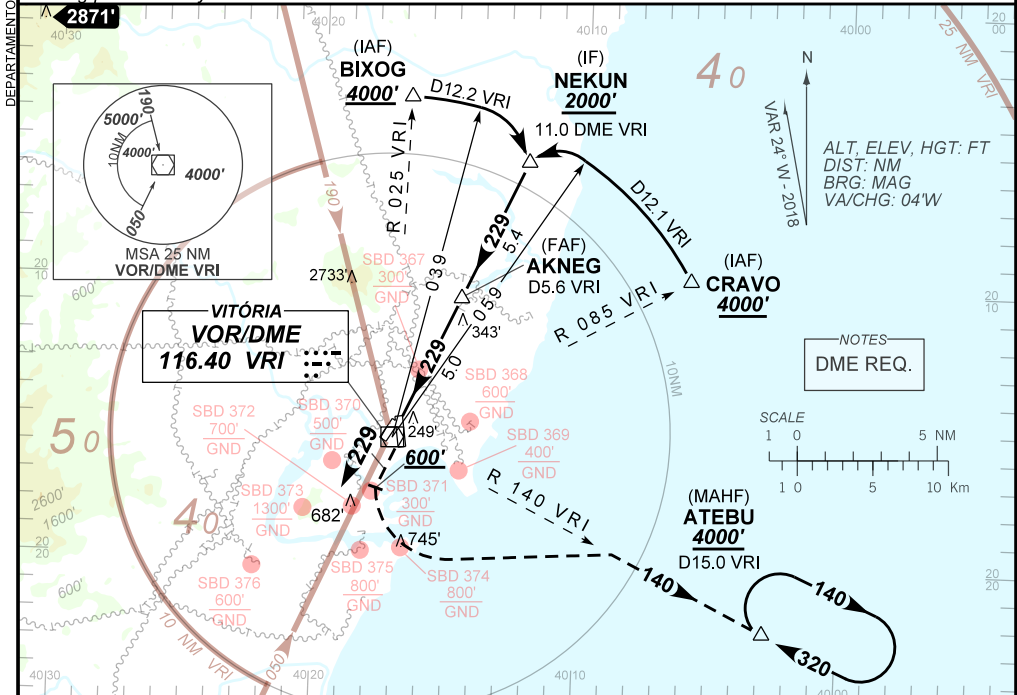
**AD ELEV: 34'**

**VOR T RWY 24**

ATIS <b>127.575</b>	APP VITÓRIA <b>119.85</b>	TWR VITÓRIA <b>118.10</b>	GNDC VITÓRIA <b>121.95</b>
VOR VRI <b>116.40 MHz</b>	FINAL CRS <b>229°</b>	FAF: <b>1660'</b>	VOR/DME <b>MDA / (OCH): 590' / (580')</b>

APCH Perdida: 1) Subir para **4000'**. Manter RDL **229** do VOR VRI até **600'**, após curvar à **ESQUERDA** RDL **140** do VOR VRI até ATEBU para espera. 2) IAS MAX 210KT até interceptar RDL **140** do VOR VRI.  
Missed APCH: 1) Climb to **4000'**. Maintain **229** RDL VRI until passing **600'**, after turn **LEFT 140** RDL VRI VOR to ATEBU for holding. 2) IAS MAX 210KT until intercepting **140** RDL VRI VOR.

RMK: Proibido circular pelo Setor Oeste.  
Circling prohibited by West Sector.



RWY24	1.7	2.0	3.0	4.0	AKNEG		Ground Speed (KT)	090	110	130	150	170	190
ALT	590	700	1018	1337	1660		FPM	500	600	700	800	900	NA
(HGT)	580	687	1005	1324	1647		FAF-MAPT	NA					

STRAIGHT-IN	CAT	A	B	C	D	E	
	MDA / (OCH)	590' / (580')				NA	
VOR	ALS / NO ALS / RVR ALS (m)	NIL / 1600 / NIL			NIL / 2700 / NIL		NA
CIRCLING	MDA / (OCH)	560' / (530')	980' / (950')	1350' / (1320')		NA	
	VIS (m)	NIL / 1600 / NIL	NIL / 2000 / NIL	NIL / 4800 / NIL			

AIRAC AMDT 2303A1 23 MAR 23

SBVT\_IAC\_02D 1/1  
IAC VOR T RWY 24

CHANGES: IDENT, LAYOUT.

DEPARTAMENTO DE CONTROLE DO ESPAÇO AÉREO