

STANDARD ARRIVAL CHART
INSTRUMENT (STAR)

MANAUS / Eduardo Gomes, INTL (SBEG)
RWY 11

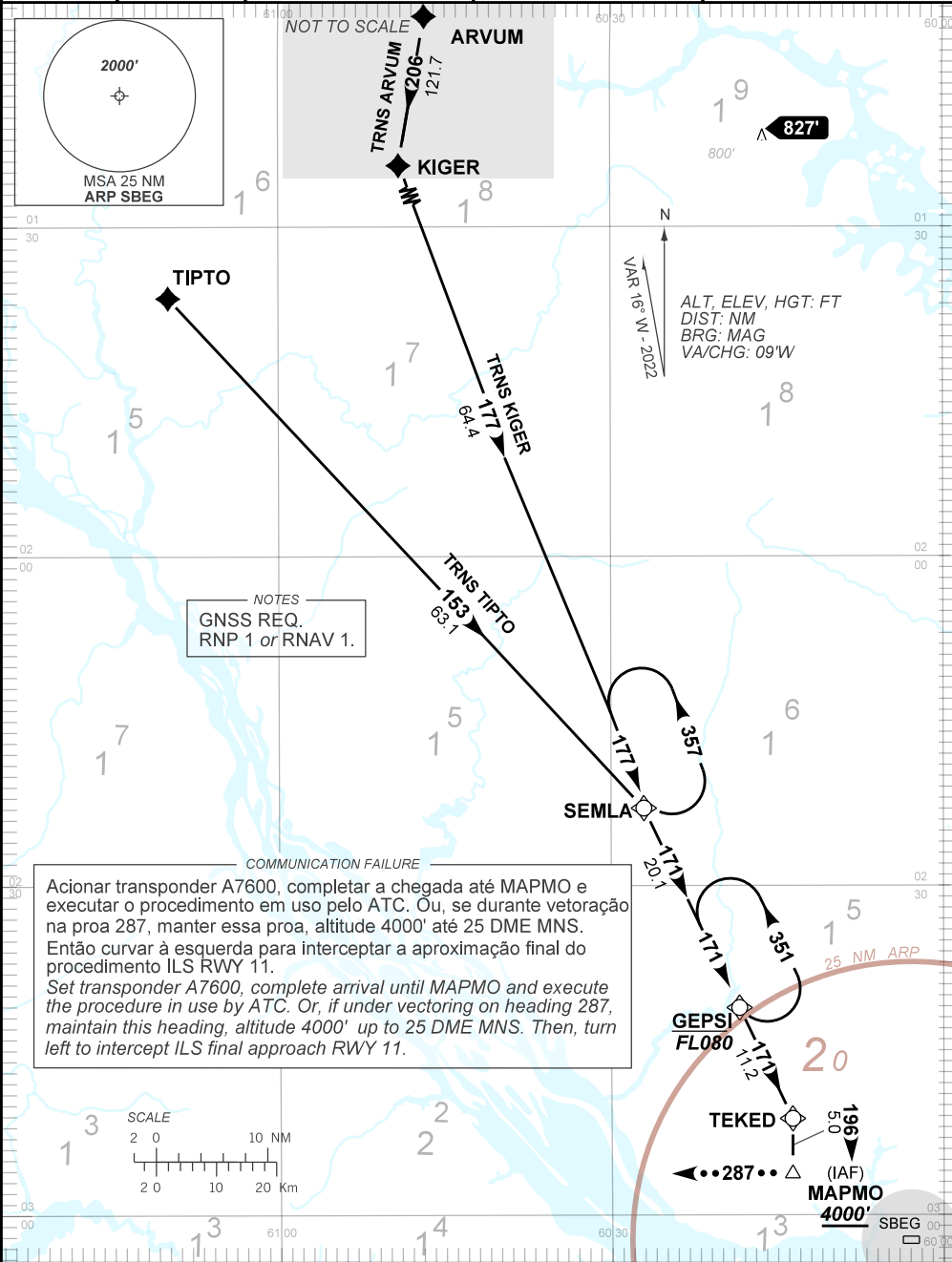
RNAV SEMLA 1A

AD ELEV: 264'

TA 4000'	D-ATIS 127.65	ACC AMAZÔNICO 125.40 125.80 124.75 133.90	APP MANAUS 119.25 119.70 120.40	TWR EDUARDO GOMES 118.30
----------	------------------	---	---------------------------------------	-----------------------------

DEPARTAMENTO DE CONTROLE DO ESPAÇO AÉREO

CHANGES: F. DIST. HDG.



NOTES
GNSS REQ.
RNP 1 or RNAV 1.

COMMUNICATION FAILURE

Acionar transponder A7600, completar a chegada até MAPMO e executar o procedimento em uso pelo ATC. Ou, se durante vortação na proa 287, manter essa proa, altitude 4000' até 25 DME MNS. Então curvar à esquerda para interceptar a aproximação final do procedimento ILS RWY 11.

Set transponder A7600, complete arrival until MAPMO and execute the procedure in use by ATC. Or, if under vectoring on heading 287, maintain this heading, altitude 4000' up to 25 DME MNS. Then, turn left to intercept ILS final approach RWY 11.

