

**INSTRUMENT APPROACH
CHART (IAC)**

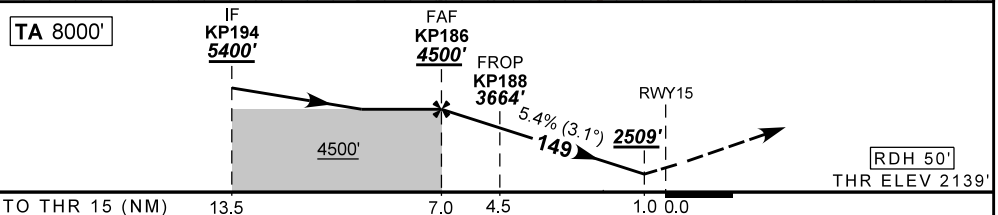
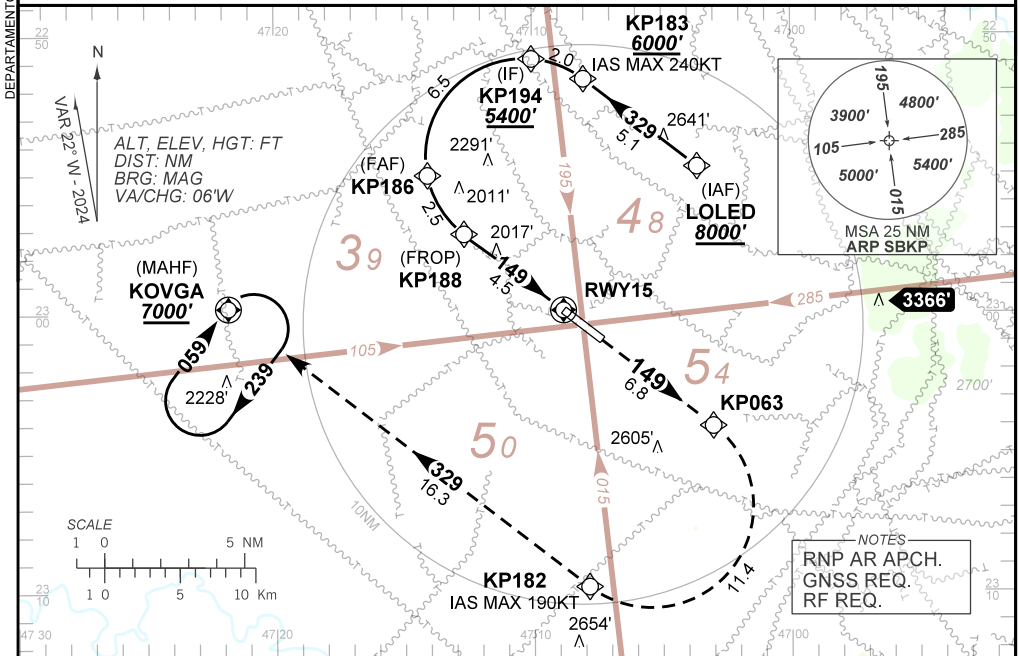
CAMPINAS / Viracopos, INTL (SBKP)

AD ELEV: 2170'

RNP Y RWY 15 (AR)

D-ATIS 127.825	APP SÃO PAULO 119.05 119.15 119.25 119.60 119.80 120.05 120.25 120.45 120.85 121.40 122.75 123.25 124.15	TWR CAMPINAS 118.25	GNDC CAMPINAS 121.90
TEMP LNAV/VNAV MIN -10°C / MAX 45°C	FINAL CRS 149°	FAF: 4500'	RNP 0.3 DA / (OCH): 2509' / (370')

APCH Perdida: Subir para **7000'**. Manter rumo **149** até KP063. Após, curvar à DIREITA até KP182. Após, rumo **329** até KOVGA para espera.
 Missed APCH: Climb to **7000'**. Maintain course **149** until KP063. After, turn RIGHT until KP182. After, course **329** until KOVGA for holding.



KP186	5.0	KP188	3.0	2.0	1.0	RWY15	Ground Speed (KT)	090	110	130	150	170	190
4500	3835	3664	3176	2847	2509	ALT	FPM	500	600	700	800	900	NA
2361	1696	1525	1037	708	370	(HGT)	FAF-MAPT	NA					

STRAIGHT-IN	CAT	A	B	C	D	E	
	DA / (OCH)	2509' / (370')					NA
RNP 0.3	ALS/NO ALS/ RVR ALS (m)	1000 / 1700 / NIL					

**AUTORIZAÇÃO ESPECIAL PARA AERONAVE E TRIPULAÇÃO REQUERIDA
SPECIAL AUTHORIZATION FOR AIRCRAFT AND CREW REQUIRED**

CHANGES: PROC.