

**INSTRUMENT APPROACH
CHART (IAC)**

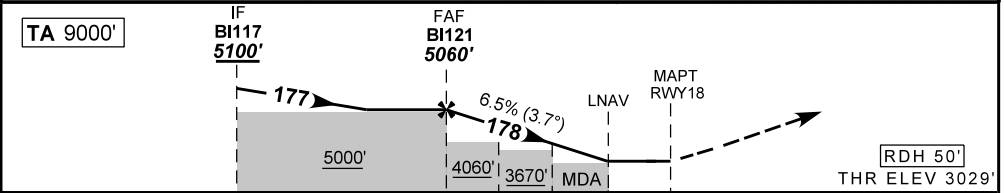
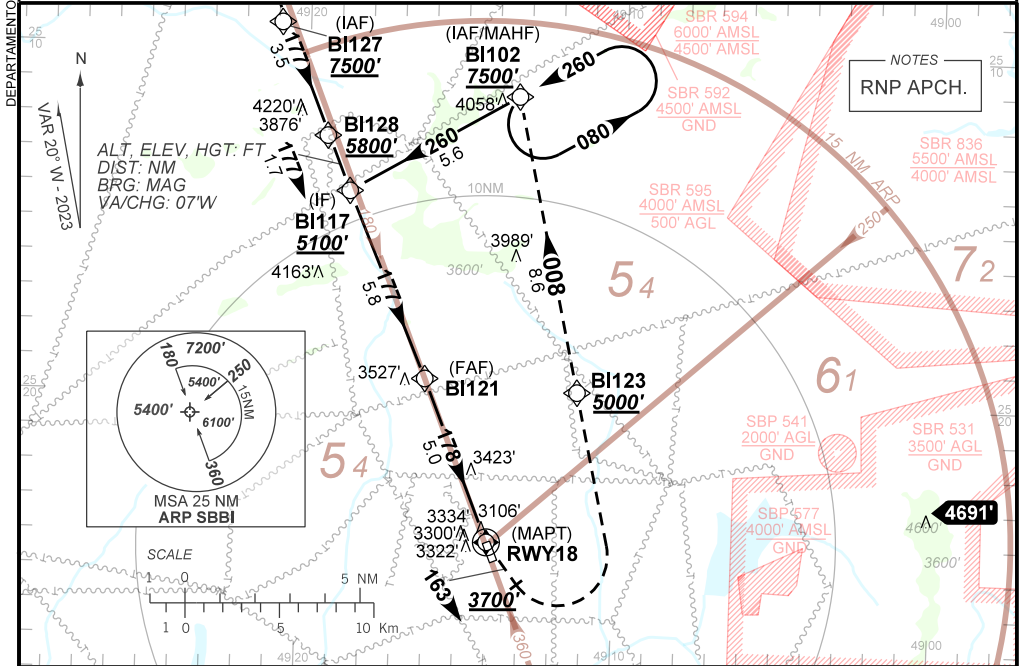
**CURITIBA / Baccheri (SBBI)
RNP Z RWY 18
(CAT A, B)**

AD ELEV: 3059'

ATIS 132.325	APP CURITIBA 119.70 119.95 120.65 120.95 129.55 133.15	TWR BACACHERI 118.90	AFIS BACACHERI 118.90 119.95	GNDC BACACHERI 121.80
------------------------	--	--------------------------------	--	---------------------------------

N/A	FINAL CRS 178°	FAF: 5060'	N/A	LNAV MDA / (OCH): 3520' / (500')
------------	--------------------------	----------------------	------------	--

APCH Perdida: Subir para **7500'**. Manter proa **163** até **3700'**. Curvar à ESQUERDA direto BI123. Após, manter rumo **008** até BI102 para espera.
 Missed APCH: Climb to **7500'**. Maintain heading **163** until **3700'**. Turn LEFT direct BI123. After, maintain course **008** until BI102 for holding.



TO THR 18 (NM)	10.8	5.0	2.5	1.5	1.1	0.0
----------------	------	-----	-----	-----	-----	-----

BI121	4.0	3.0	2.5	1.5	1.1	RWY18	Ground Speed (KT)	090	110	130	150	170	190
5060	4651	4258	4067	3672	3520	ALT	FPM	600	700	900	NA		
2031	1622	1229	1038	643	500	(HGT)	FAF-MAPT	NIL					

STRAIGHT-IN	CAT	A	B	C	D	E	
	MDA / (OCH)	3520' / (500')			NA		
LNAV	ALS/SNO ALS/ RVR ALS (m)	NIL / 1600 / NIL			NA		
	MDA / (OCH)	NA					
CIRCLING	MDA / (OCH)	NA					
	VIS (m)	NA					

CHANGES: EAC