

**INSTRUMENT APPROACH  
CHART (IAC)**

**SÃO PAULO / Guarulhos - Gov. André Franco Montoro, INTL (SBGR)**

**AD ELEV: 2461'**

**RNAV(RNP) W RWY 09R**

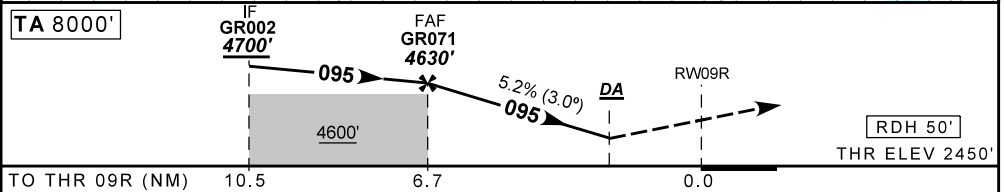
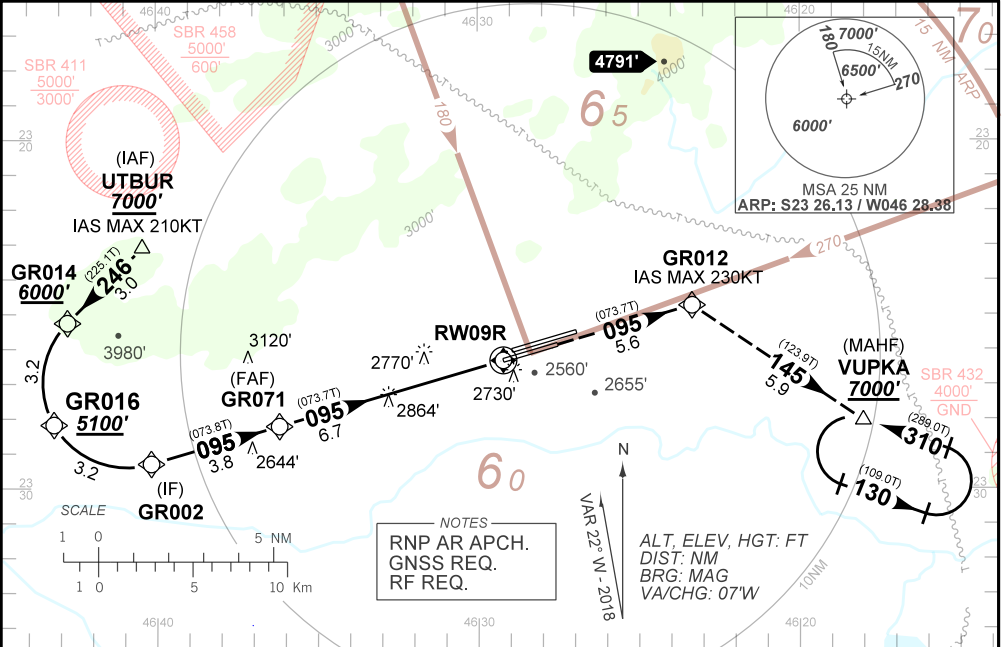
D-ATIS <b>127.75</b>	APP SÃO PAULO <b>129.75 119.15 120.45 120.85 133.85 121.50</b>	TWR GUARULHOS <b>118.40 132.75 135.20 121.50</b>	GNDC GUARULHOS <b>121.70 126.90</b>
N/A	FINAL CRS <b>095°</b>	FAF: <b>4630'</b>	RNP 0.3 DA / (OCH): <b>2891' / (441')</b>
			RNP 0.1 DA / (OCH): <b>2812' / (362')</b>

APCH Perdida: 1) Subir para **7000'**, gradiente MNM 5%. Manter rumo **095** até GR012. Curvar à DIREITA rumo **145** para espera em VUPKA.

Missed APCH: 1) Climb to **7000'**, MNM gradient 5%. Maintain course **095** until GR012. Turn RIGHT course **145** until VUPKA for holding.

RMK: 1) Para sistemas BARO-VNAV não compensados, procedimento não autorizado abaixo de -10°C ou acima de 45°C.

1) For uncompensated BARO-VNAV systems, procedure not authorized below -10°C or above 45°C.



GR071	5.0	4.0	3.0	2.0	1.0	RW09R	KT	90	110	130	150	170	190
4630	4093	3774	3456	3137	2818	ALT	FPM	500	600	700	800	900	NA
2180	1643	1325	1006	687	368	(HGT)	FAF-MAPT	NA					

STRAIGHT-IN	CAT	A	B	C	D	E
RNP 0.3	DA / (OCH)	2891' / (441')			1300 / 2100 / NIL	
	ALS/NO ALS/ RVR ALS (m)	800 / 1600 / NIL			1300 / 2100 / NIL	
RNP 0.1	DA / (OCH)	2812' / (362')			1000 / 1700 / NIL	
	ALS/NO ALS/ RVR ALS (m)	800 / 1600 / NIL			1000 / 1700 / NIL	

**AUTORIZAÇÃO ESPECIAL PARA AERONAVE E TRIPULAÇÃO REQUERIDA  
SPECIAL AUTHORIZATION FOR AIRCRAFT AND CREW REQUIRED**

Aprovação Específica  
(ANAC IS 91.001)  
Specific Approval  
(ANAC IS 91.001)

CHANGES: NEW CHART.