

STANDARD DEPARTURE
CHART INSTRUMENT (SID)

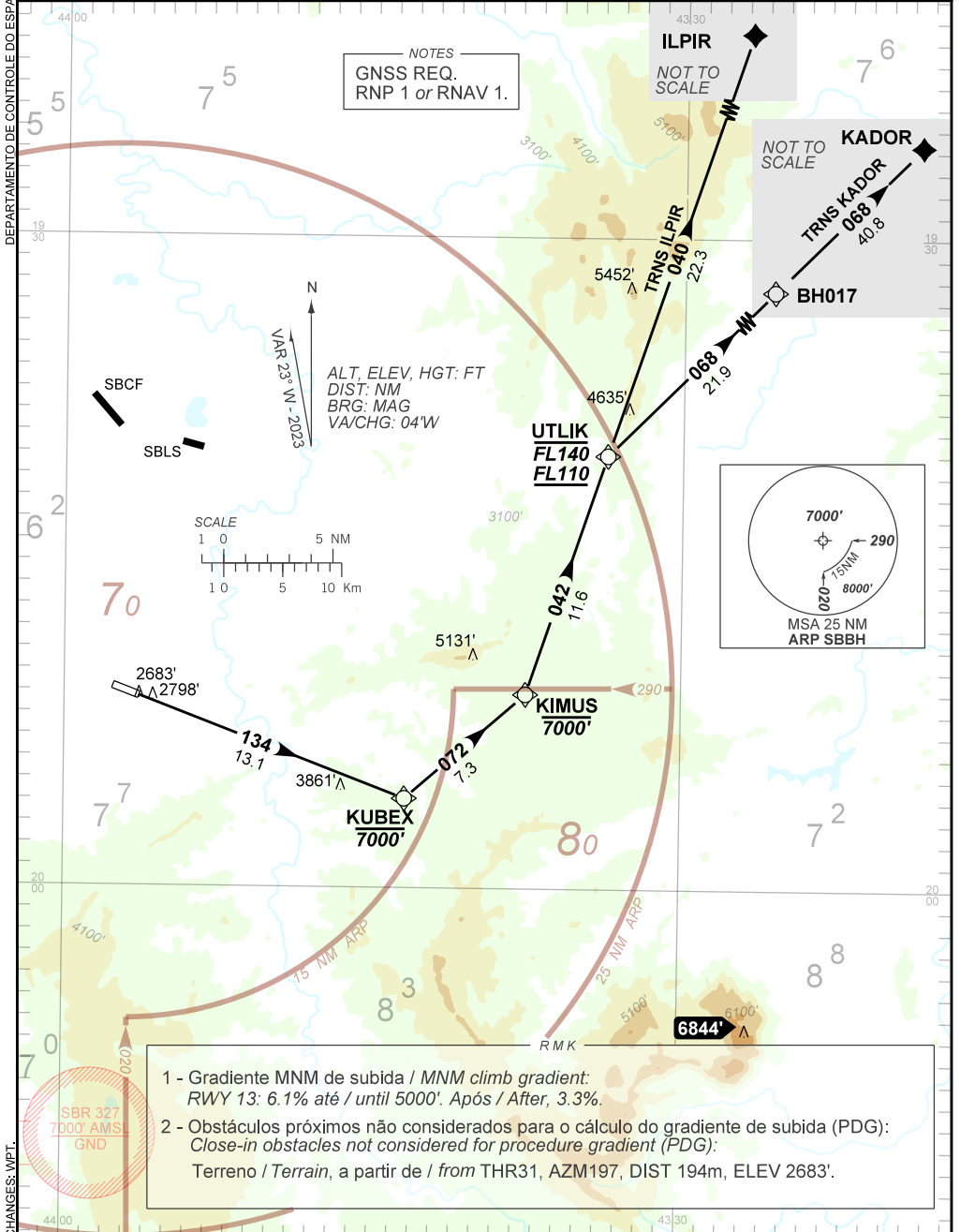
BELO HORIZONTE / Pampulha - Carlos Drummond de Andrade (SBBH)

RWY 13

RNAV UTLIK 1A

AD ELEV: 2589'

TA 8000'	ATIS 127.45	TWR BELO HORIZONTE 118.00	APP BELO HORIZONTE 119.10 119.30 119.65 120.20 128.55 129.10 129.40	ACC BRASÍLIA 126.75 127.30
----------	-------------	---------------------------	---------------------------------------------------------------------	----------------------------



- 1 - Gradiente MNM de subida / MNM climb gradient:
RWY 13: 6.1% até / until 5000'. Após / After, 3.3%.
- 2 - Obstáculos próximos não considerados para o cálculo do gradiente de subida (PDG):
Close-in obstacles not considered for procedure gradient (PDG):
Terreno / Terrain, a partir de / from THR31, AZM197, DIST 194m, ELEV 2683'.

CHANGES: WPT.