

**INSTRUMENT APPROACH
CHART (IAC)**

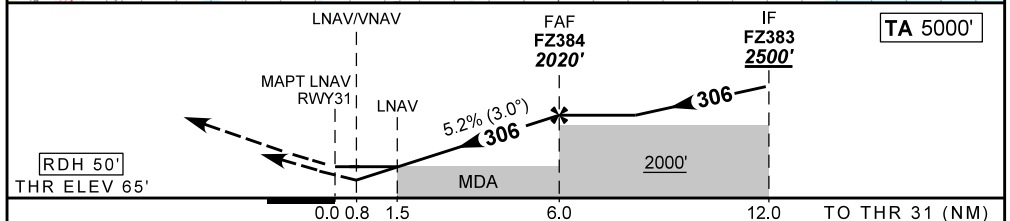
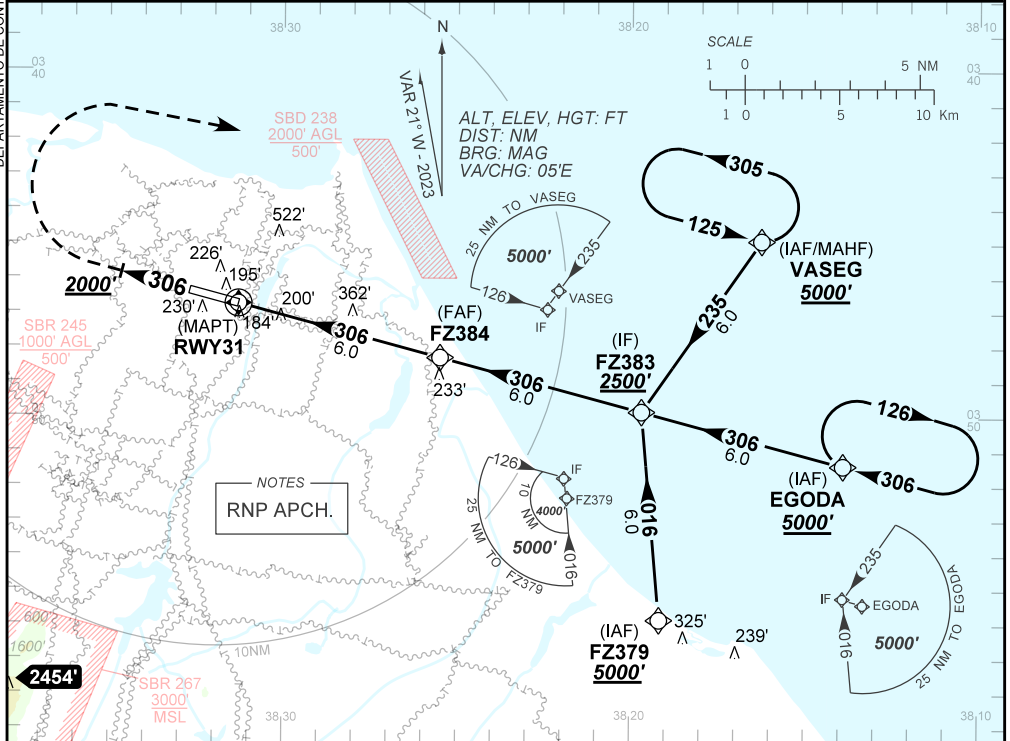
FORTALEZA / Pinto Martins, INTL (SBFZ)

AD ELEV: 83'

RNP RWY 31

D-ATIS 127.70	APP FORTALEZA 120.50 133.00 134.55	TWR FORTALEZA 129.00	GNDC FORTALEZA 121.95
TEMP LNAV/VNAV MIN 10°C / MAX 50°C	FINAL CRS 306°	FAF: 2020'	LNAV/VNAV DA / (OCH): 361' / (296')
		LNAV MDA / (OCH): 600' / (540')	

APCH Perdida: Subir para **5000'**. Manter rumo **306** até **2000'**. Após, curvar à DIREITA direto VASEG para espera
Missed APCH: Climb to **5000'**. Maintain course **306** until **2000'**. After, turn RIGHT direct VASEG for holding.



RWY31	1.5	2.0	3.0	4.0	5.0	FZ384	Ground Speed (KT)	090	110	130	150	170	190
ALT	600	752	1070	1389	1707	2030	FPM	500	600	700	800	900	1000
(HGT)	540	687	1005	1324	1642	1965	FAF-MAPT	NIL					

STRAIGHT-IN	CAT	A	B	C	D	E
	DA / (OCH)	361' / (296')				NA
LNAV/VNAV	ALS / NO ALS / RVR (m)	NIL / 1400 / NIL				NA
	MDA / (OCH)	600' / (540')				
LNAV	ALS / NO ALS / RVR (m)	NIL / 1600 / NIL		NIL / 2400 / NIL		
	MDA / (OCH)	NA				
CIRCLING	MDA / (OCH)	NA				
	VIS (m)	NA				

DEPARTAMENTO DE CONTROLE DO ESPAÇO AÉREO