

STANDARD DEPARTURE CHART
INSTRUMENT (SID)

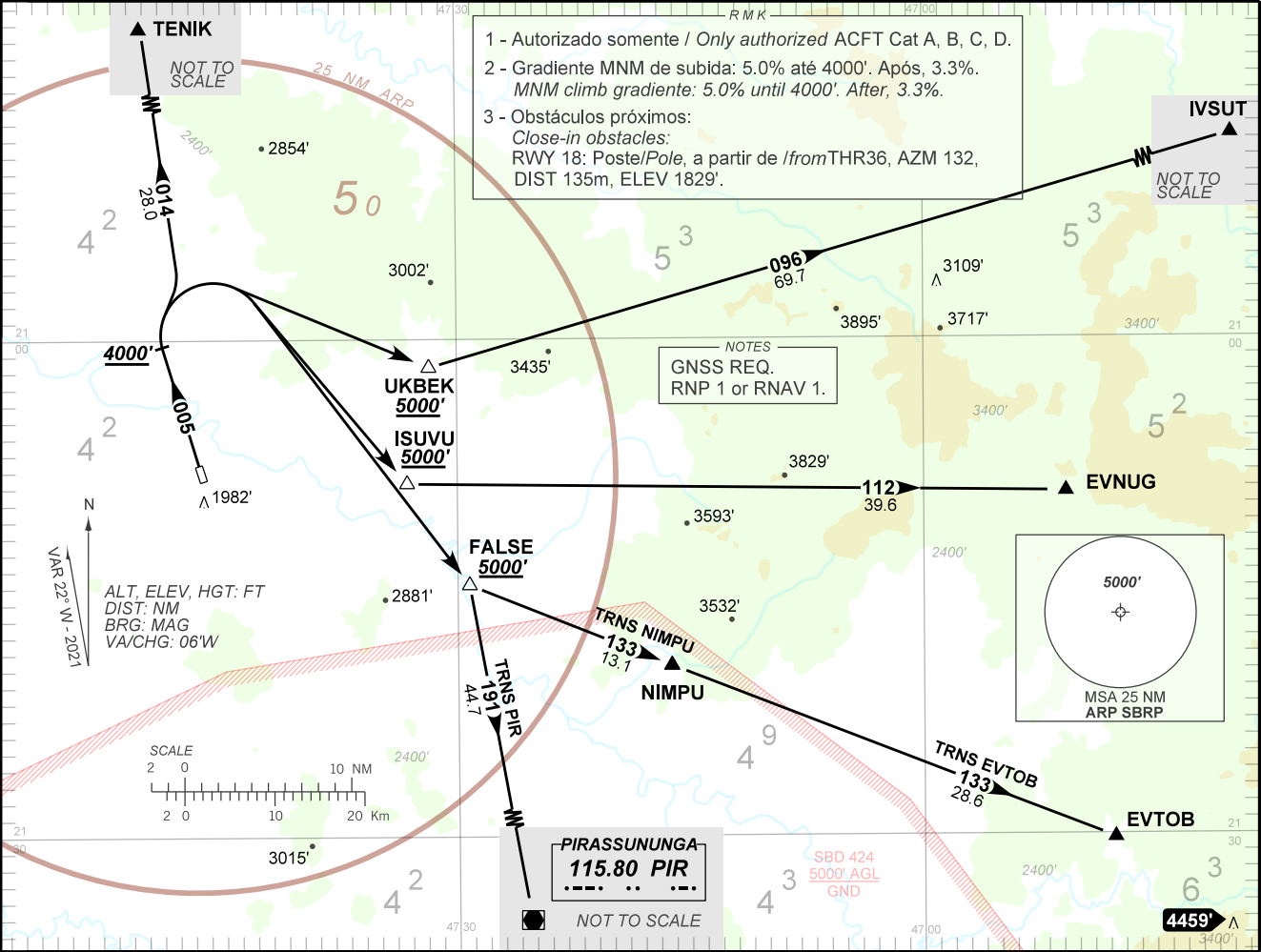
RIBEIRÃO PRETO / Leite Lopes (SBRP)
RWY 36

RNAV EVNUG 2A - FALSE 2B - IVSUT 2A - TENIK 2B

TWR RIBEIRÃO	118.00
APP UBERABA	120.80

ACC BRASILIA	123.35	124.20	124.80	126.45	126.80
APP ACADEMIA	119.55	119.75	120.10	120.40	123.35
	122.40	122.80	123.60	134.60	128.05
	128.05	128.50	134.00	135.15	135.55

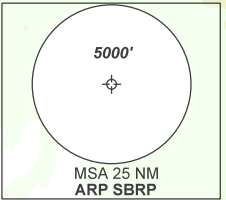
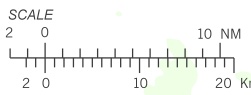
TA 7000'	AD ELEV.: 1805'
----------	-----------------



- 1 - Autorizado somente / Only authorized ACFT Cat A, B, C, D.
- 2 - Gradiente MNM de subida: 5.0% até 4000'. Após, 3.3%.
MNM climb gradient: 5.0% until 4000'. After, 3.3%.
- 3 - Obstáculos próximos:
Close-in obstacles:
RWY 18: Poste/Pole, a partir de /from THR36, AZM 132, DIST 135m, ELEV 1829'.

NOTES
GNSS REQ.
RNP 1 or RNAV 1.

ALT, ELEV, HGT: FT
DIST: NM
BRG: MAG
VA/CHG: 06'W



PIRASSUNUNGA
115.80 PIR
NOT TO SCALE

RIBR 22° W - 2021
SBRP_SID_00P_1/1
SID RNAV EVNUG 2A - FALSE 2B - IVSUT 2A - TENIK 2B RWY 36
AIRC AMDT 2105A3 20 MAY 21