

INSTRUMENT APPROACH  
CHART (IAC)

GUARATINGUETÁ / Guaratinguetá (SBGW)

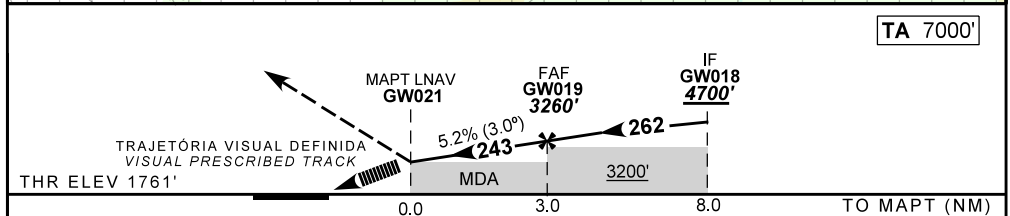
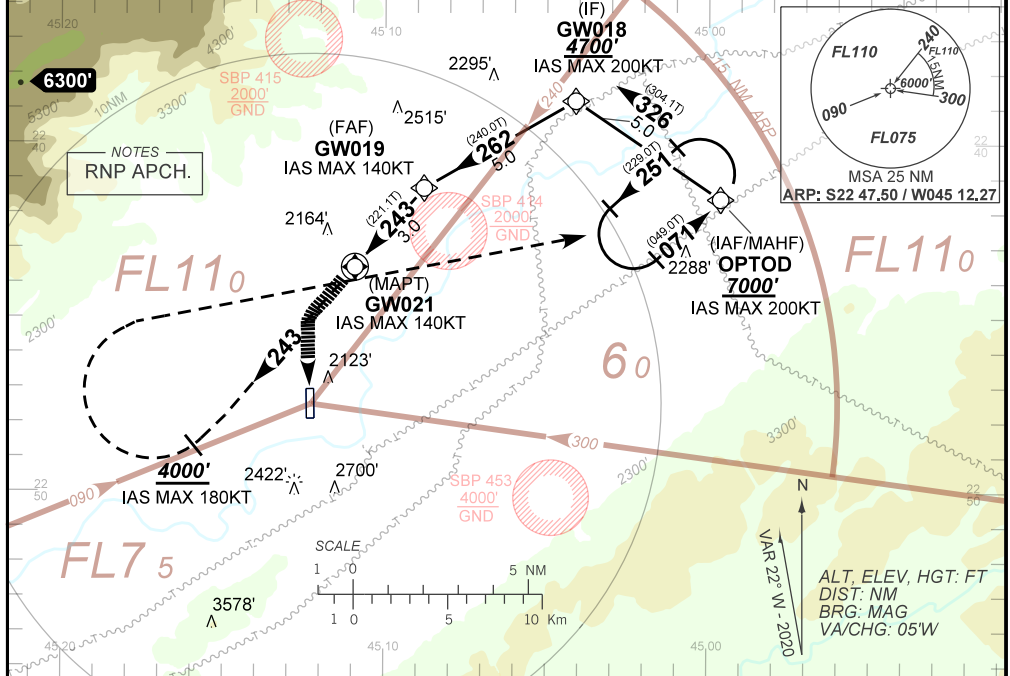
AD ELEV: 1761'

RNAV(GNSS) A RWY 20

ATIS NIL	APP GUARÁ 120.15		TWR GUARÁ 118.15	GNDC NIL
N/A	FINAL CRS 243°	FAF: 3260'	N/A	N/A

APCH Perdida: 1) Subir para **7000'**. Manter rumo **223°** até cruzar **4000'**. Então, curvar à DIREITA direto para OPTOD para espera. 2) Gradiente MNM 5.0% até 6000'. Após, 2.5%.  
Missed APCH: 1) Climb to **7000'**. Maintain course **223°** until passing **4000'**. Then, turn RIGHT direct to OPTOD for holding. 2) MNM gradient 5.0% until 6000'. After, 2.5%.

RMK: NIL.



MAPT	GW021	1.0	2.0	GW019						
ALT	2400	2718	3036	3260						
(HGT)	640	957	1275	1499						

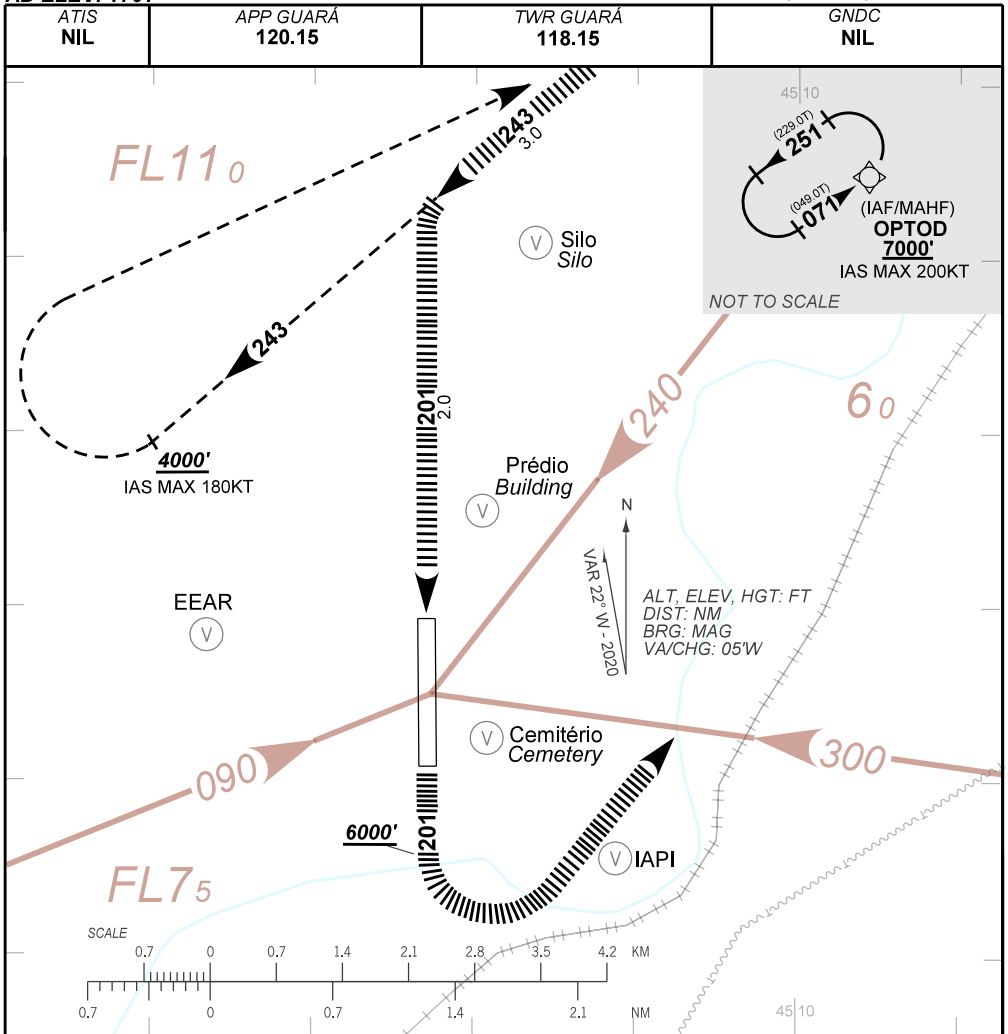
KT	090	110	130	150	170	190
FPM	500	600	700	800	NA	NA
FAF-MAPT	NA					

STRAIGHT-IN	CAT	A	B	C	D	E
	MDA / (OCH)					
LNAV	ALS/NO ALS/ RVR ALS (m)					
CIRCLING	MDA / (OCH)	2400' / (640')			NA	
	VIS (m)	1900	2800	3700		

CHANGES: HGT.

AD ELEV: 1761'

RNAV(GNSS) A RWY 20



**TRAJETÓRIA VISUAL DEFINIDA RWY 20  
VISUAL PRESCRIBED TRACK RWY 20**

1) O procedimento deverá ser autorizado pelo APP GUARÁ durante a aproximação final e aproximação perdida.

*Procedure must be authorized by GUARÁ APP on final and missed approaches.*

2) O piloto deverá estar em contato visual e prover sua própria separação com as referências visuais:

Silo (S22 44.90, W45 11.62), Prédio (S22 46.44, W45 11.95) e a EEAR (S22:47.16; W045:13.66).

*The pilot should have visual contact and provide his own separation with the visual references: Silo (S22 44.90 W45 11.62), Building (S22 46.44, W45 11.95) and EEAR (S22:47.16, W45:13.66).*

3) Em caso de arremetida durante a manobra para circular: Subir imediatamente para 7000' no rumo 201.

Após passar 6000', voar direto OPTOD para espera.

*In case of go around during the circling maneuvering: Climb immediately to 7000' on course 201. After passing 6000', fly direct to OPTOD for holding*

4) Observar concentração de pássaros na vizinhança do aeródromo.

*Be aware to bird concentration in the vicinity of the aerodrome.*

5) Observar AIC sobre circulação visual na Terminal São Paulo. (REA Mike).

*See AIC about visual flight in São Paulo Terminal area. (MIKE REA).*

CHANGES: HGT: