

**INSTRUMENT APPROACH
CHART (IAC)**

BRASÍLIA / Pres. Juscelino Kubitschek, INTL (SBBR)

ILS U or LOC U RWY 11L

AD ELEV: 3498'

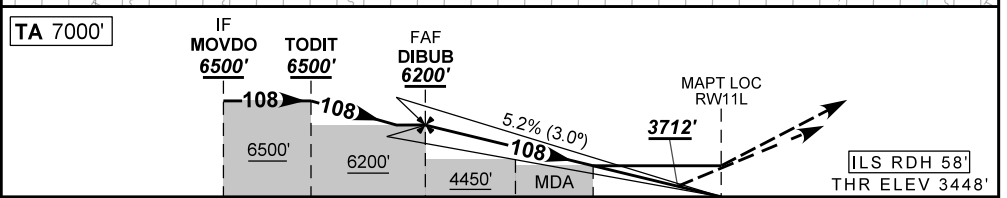
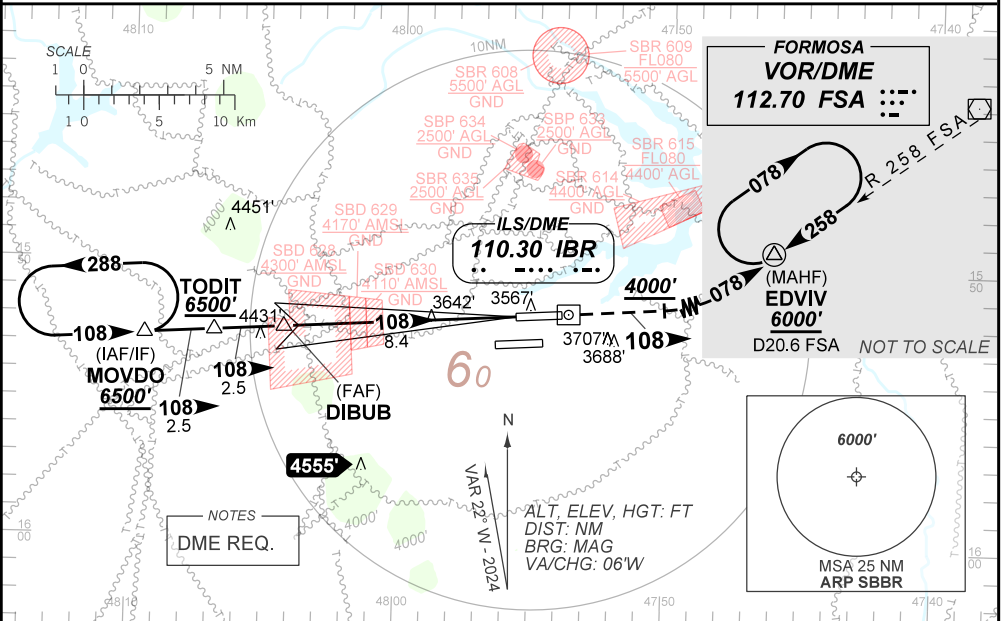
D-ATIS 127.80	APP BRASÍLIA 119.70 129.60 119.20 120.00		TWR BRASÍLIA 118.10 118.45 118.75	GND C BRASÍLIA 121.80 121.95
ILS/DME IBR 110.30 MHz	FINAL CRS 108°	FAF: 6200'	CAT I DA / (OCH): 3712' / (264')	LOC MDA / (OCH): 3890' / (450')

APCH Perdida: Subir para **6000'**. Manter proa **108** até **4000'**. Curva à ESQUERDA proa **078** para interceptar RDL **258** do VOR FSA para espera em EDVIV.

Missed APCH: Climb to **6000'**. Maintain heading **108** until **4000'**. Turn LEFT heading **078** to intercept **258** RDL FSA VOR for holding over EDVIV.

RMK: (*)VIS RVR ALS 600m para APCH utilizando Diretor de Voo, Piloto Automático ou Head-Up Display (HUD)
(*)VIS RVR ALS 600m for APCH using a Flight Director, Autopilot or Head-Up Display (HUD).

DEPARTAMENTO DE CONTROLE DO ESPAÇO AÉREO



TO THR 11L (NM)	13.3	10.8	8.4	3.0	1.2	0.6	0.0
TO IBR (DME)	15.2	12.7	10.3	4.9	3.1	2.5	1.9

DIBUB	5.0	4.0	3.0	2.0	1.2	RWY11L	Ground Speed (KT)	090	110	130	150	170	190
6200	5098	4780	4473	4143	3890	ALT	FPM	500	600	700	800	900	1000
2752	1650	1332	1025	695	450	(HGT)	FAF-MAPT	NA					

STRAIGHT-IN	CAT	A	B	C	D	E
	DA / (OCH)	3712' / (264')				
CAT I	ALS/NO ALS/ RVR ALS (m)	800 / 1300 / 700 (*)				
	MDA / (OCH)	3890' / (450')				
LOC	ALS/NO ALS/ RVR ALS (m)	800 / 1600 / 700		1400 / 2100 / 1250		
	MDA / (OCH)	NA				
CIRCLING	MDA / (OCH)	NA				
	VIS (m)	NA				

CHANGES: EAC. LAYOUT. PROC. VAR.