

**INSTRUMENT APPROACH
CHART (IAC)**

CURITIBA / Afonso Pena, INTL (SBCT)

AD ELEV: 2989'

ILS W CAT I & II RWY 15

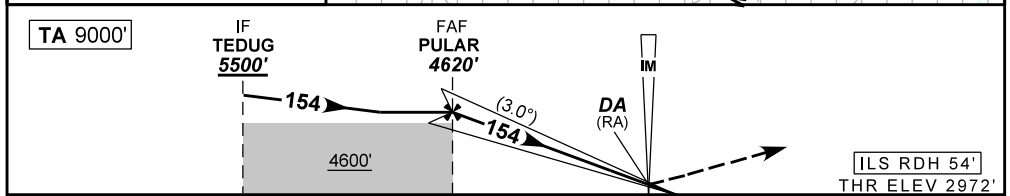
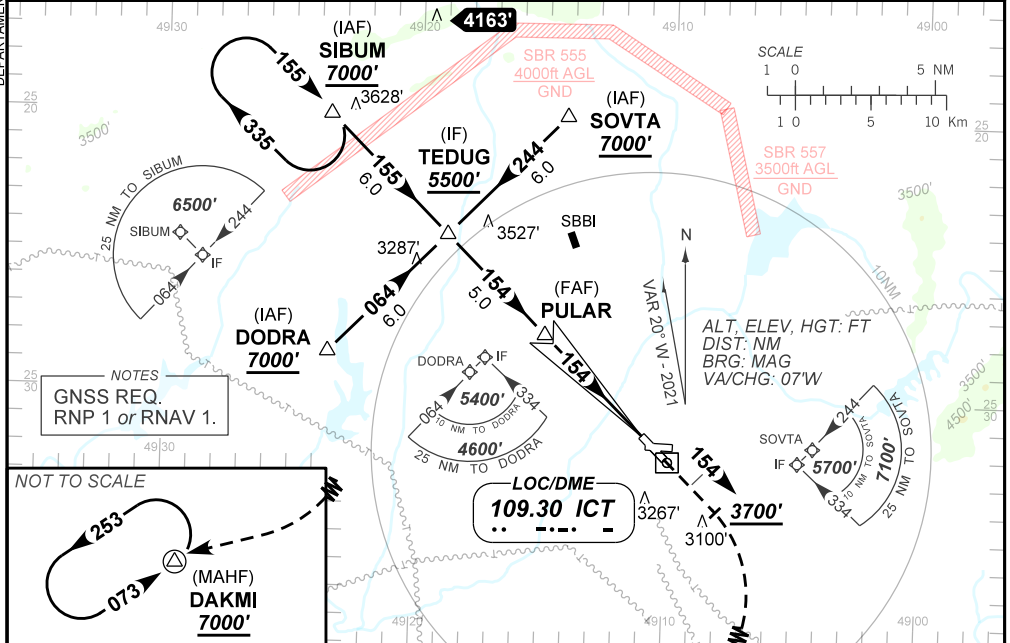
D-ATIS 127.80	APP CURITIBA 119.70 119.95 120.65 120.95 129.55 133.15			TWR CURITIBA 118.15	GNDC CURITIBA 121.90
-------------------------	--	--	--	-------------------------------	--------------------------------

LOC ICT 109.30 MHz	FINAL CRS 154°	FAF 4620'	CAT I & CAT II DA / (OCH): REFER TO MNM	N/A
------------------------------	--------------------------	---------------------	---	------------

APCH Perdida: Subir para **7000'**. Manter proa **154°** até **3700'**. Após, curvar à DIREITA direto DAKMI para espera.
 Missed APCH: Climb to **7000'**. Maintain heading **154°** until **3700'**. After, turn RIGHT direct to DAKMI for holding.

RMK: (*)VIS RVR ALS 550m para APCH utilizando Diretor de Voo, Piloto Automático ou Head-Up Display (HUD).
 (*)VIS RVR ALS 550m for APCH using a Flight Director, Autopilot or Head-Up Display (HUD).

DEPARTAMENTO DE CONTROLE DO ESPAÇO AÉREO



TO THR 15 (NM)	10.0	5.0	0.2	0.0
TO ICT (DME)	10.1	5.1	0.3	0.2

PULAR	3.0	2.0	1.0	0.5	0.2	RWY 15	Ground Speed (KT)	090	110	130	150	170	190
4620	3981	3663	3344	3172	3079	ALT	FPM	NIL					
1648	1009	691	372	200	107	(HGT)	FAF-MAPT	NIL					

STRAIGHT-IN	CAT	A	B	C	D	E
CAT II	DA / (OCH) / RA	3079' / (107') / 110'				
	ALS/NO ALS/ RVR ALS (m)	NIL / NIL / 350				
CAT I	DA / (OCH)	3172' / (200')				
	ALS/NO ALS/ RVR ALS (m)	800 / 1200 / 700(*)				
		NA				

CHANGES: PROC.