

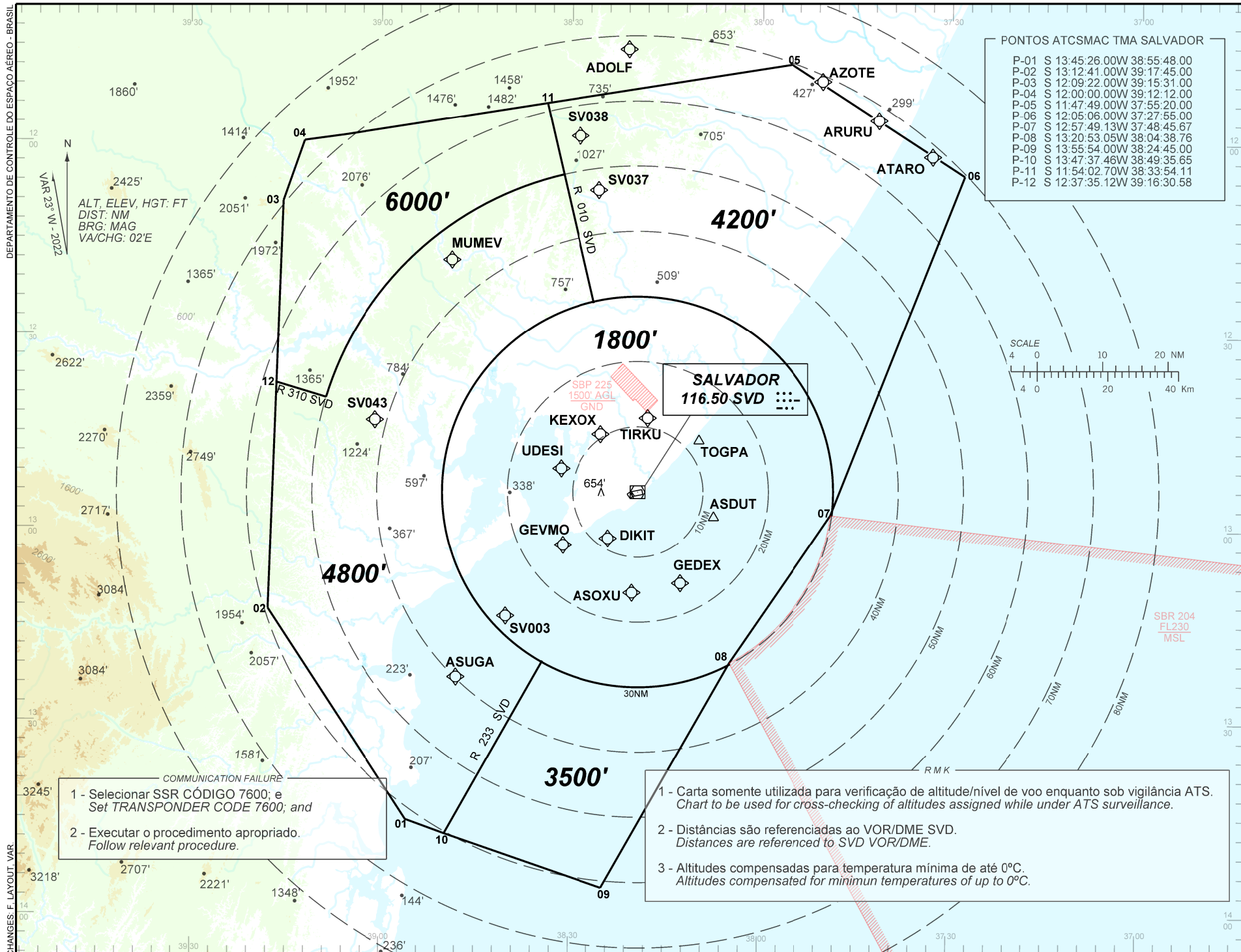
CARTA DE ALTITUDE MÍNIMA DE VIGILÂNCIA ATC - ATCSMAC

ATC SURVEILLANCE MINIMUM ALTITUDE CHART - ATCSMAC

APP SALVADOR 119.35 119.80 120.80 129.45

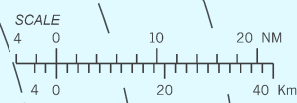
TMA SALVADOR (SBXS)

SBSV ELEV 66' TA 7000'



PONTOS ATCSMAC TMA SALVADOR

P-01	S 13:45:26.00W 38:55:48.00
P-02	S 13:12:41.00W 39:17:45.00
P-03	S 12:09:22.00W 39:15:31.00
P-04	S 12:00:00.00W 39:12:12.00
P-05	S 11:47:49.00W 37:55:20.00
P-06	S 12:05:06.00W 37:27:55.00
P-07	S 12:57:49.13W 37:48:45.67
P-08	S 13:20:53.05W 38:04:38.76
P-09	S 13:55:54.00W 38:24:45.00
P-10	S 13:47:37.46W 38:49:35.65
P-11	S 11:54:02.70W 38:33:54.11
P-12	S 12:37:35.12W 39:16:30.58



1 - Selecionar SSR CÓDIGO 7600; e Set TRANSPONDER CODE 7600; and
 2 - Executar o procedimento apropriado. Follow relevant procedure.

1 - Carta somente utilizada para verificação de altitude/nível de voo enquanto sob vigilância ATS. Chart to be used for cross-checking of altitudes assigned while under ATS surveillance.
 2 - Distâncias são referenciadas ao VOR/DME SVD. Distances are referenced to SVD VOR/DME.
 3 - Altitudes compensadas para temperatura mínima de até 0°C. Altitudes compensated for minimum temperatures of up to 0°C.